

**GROUND-FLOOR SPACE WITHIN MIXED-USE
BUILDING CURRENTLY CONFIGURED AS A
MINI MART / CONVENIENCE RETAIL USE**



252 Main St

FOR LEASE

AREA

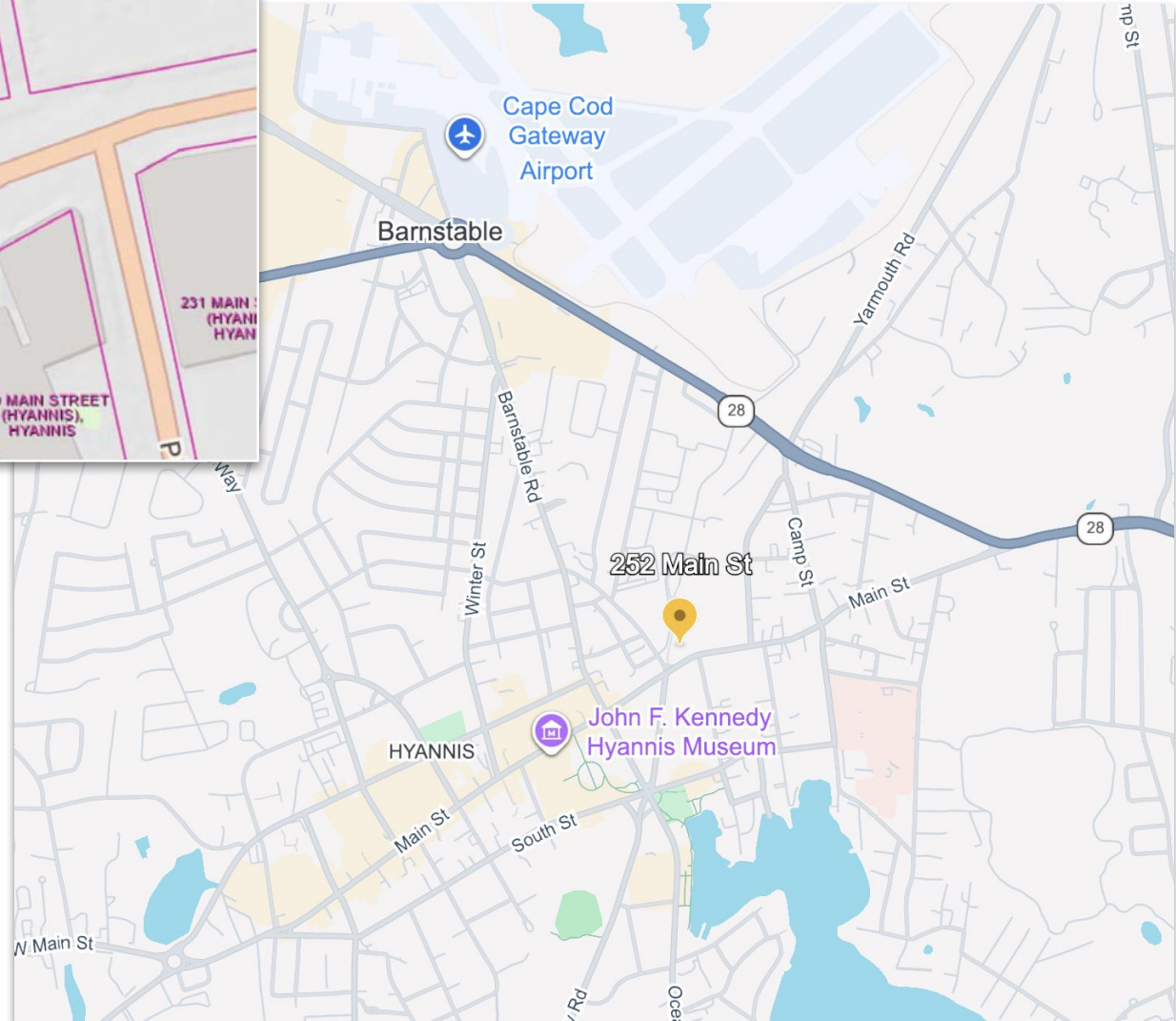
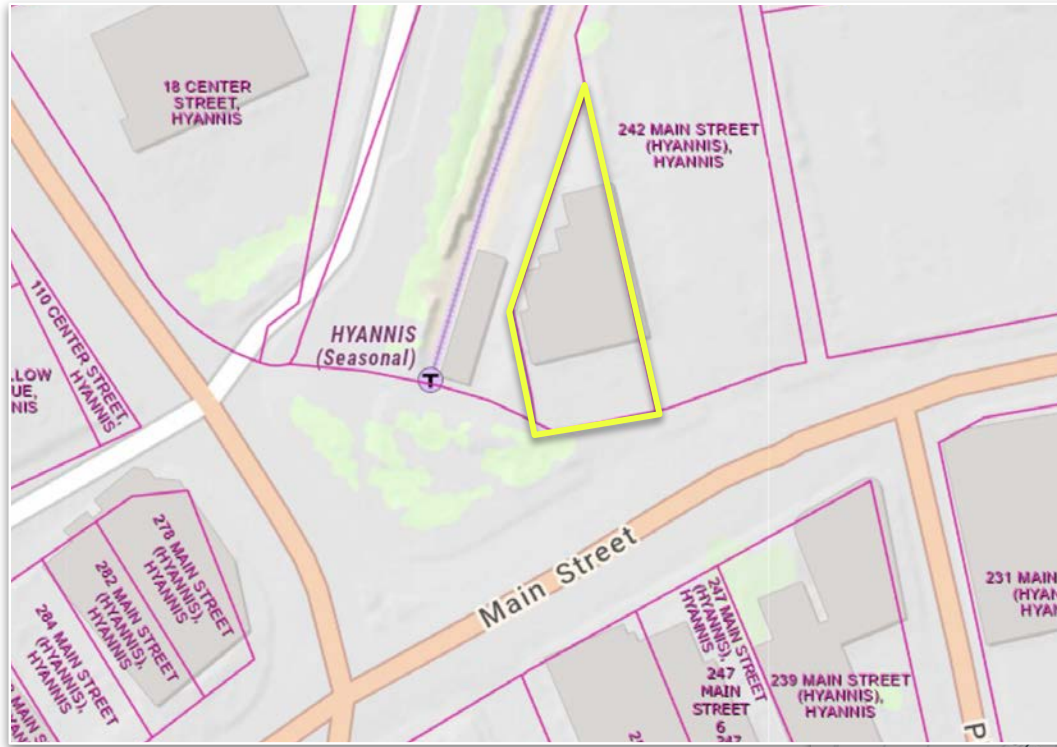
HYANNIS

\$24/SF
NNN

±2,180 Sq. Ft.

PROPERTY LOCATION

252 Main St, Hyannis, MA 02601

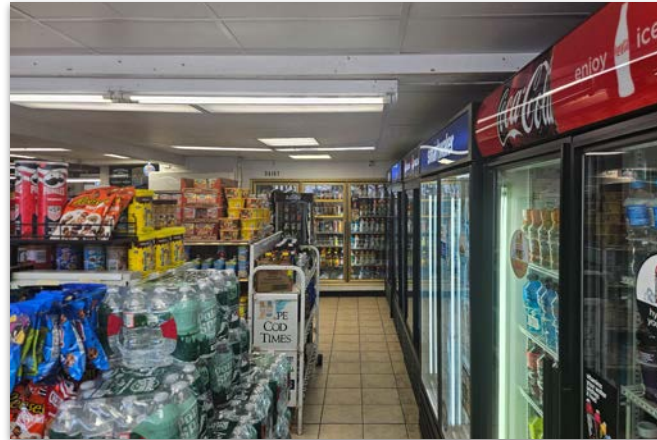
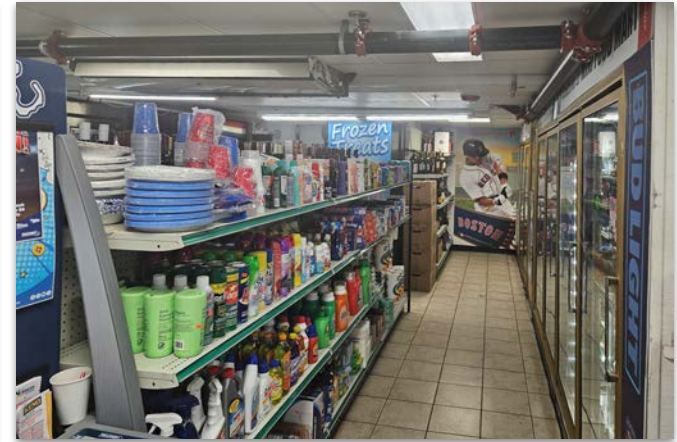
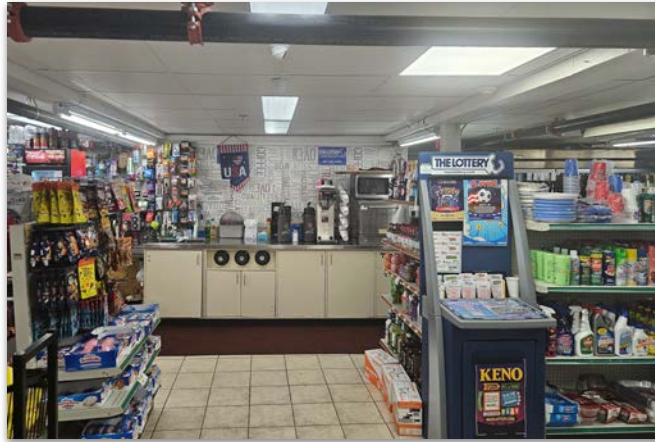
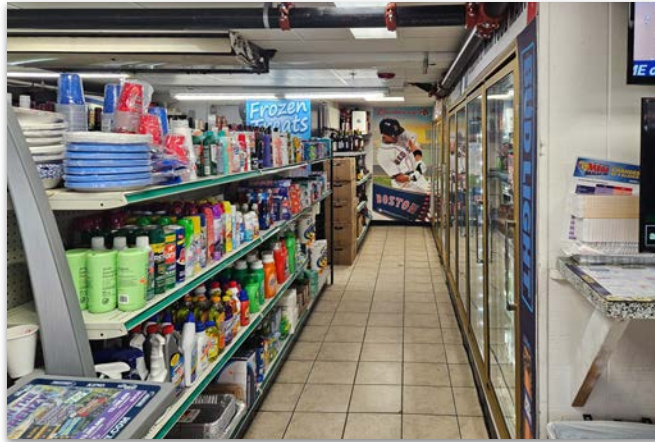
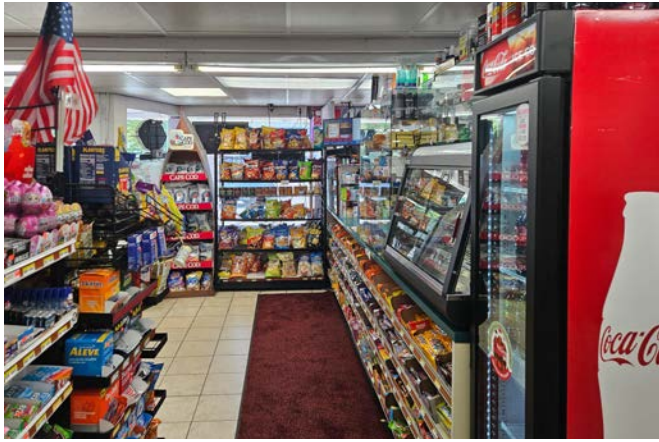


PRIME LOCATION ON CAPE COD

The property is located along the Main Street corridor near the Cape Cod Central Railroad and benefits from a recognizable Hyannis location, established commercial surroundings, and access to local, visitor, and commuter traffic.

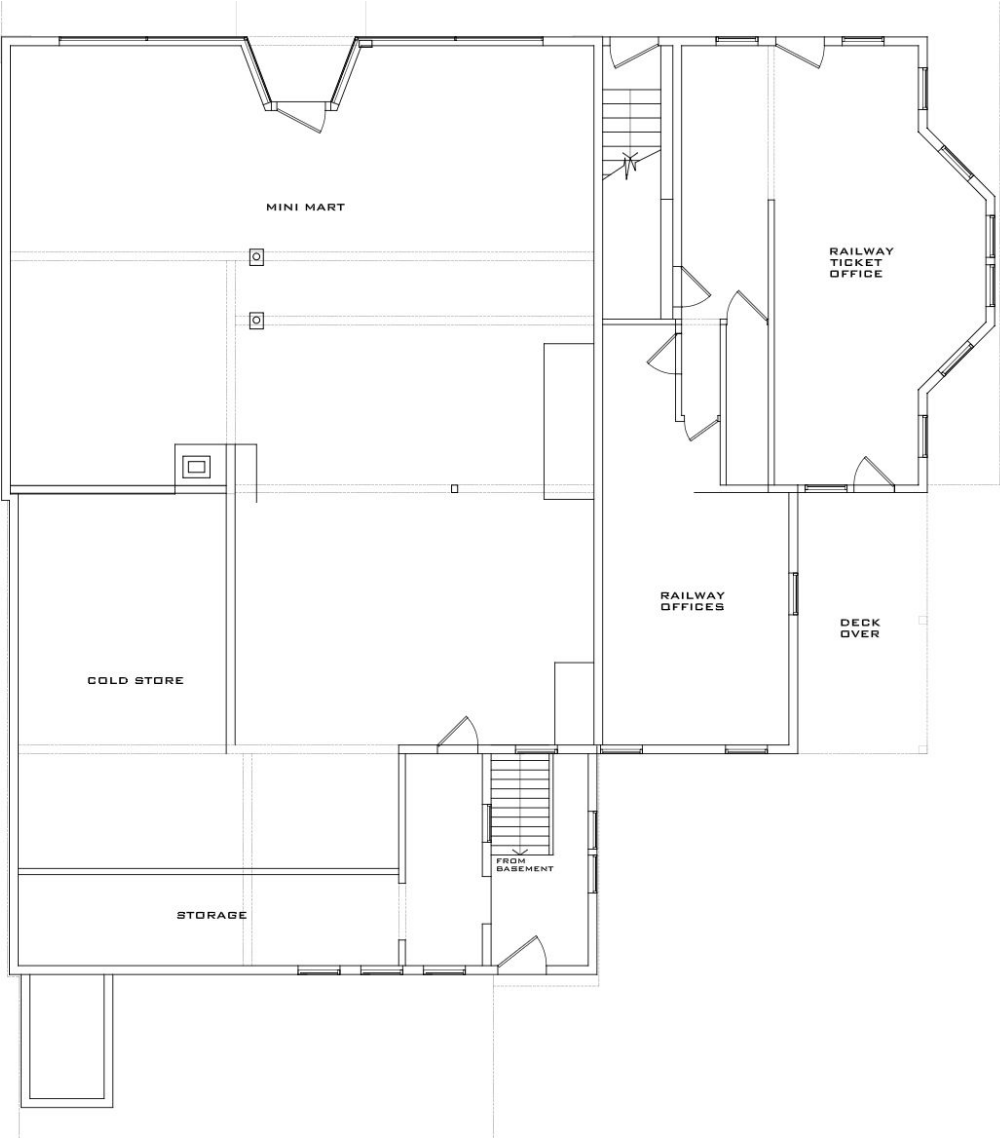
INTERIOR PICTURES

252 Main St, Hyannis, MA 02601



FLOOR PLANS

252 Main St, Hyannis, MA 02601



1 EXISTING FRONT ELEVATION 1/2" = 1 FT.
EX5

ABOUT

Commercial Realty Advisors, Inc. specializes in commercial and industrial real estate, mergers, acquisitions, joint ventures, divestitures, and other business broker strategies. It is a commercial and real estate brokerage based in Hyannis, Massachusetts, specializing in middle-market transitions. The culture of our firm is that of an investment bank with a premium placed on intellectual vitality, relationship management, and knowledge of geographic markets. A cadre of well-educated and successful experts partner with clients to achieve objectives in a cost and time- effective manner. Our business is broadly based. Our real estate practice includes development, investment, and other commercial sale, lease, and management arrangements. Transactions include manufacturing, retailing, food processing, restaurant and hospitality, golf course, marinas, and other businesses.



SCAN THE QR
CODE TO VISIT
COMREALTY.NET!

Commercial Realty Advisors' Disclaimer

This information has been secured from sources we believe to be reliable, but we make no representation or warranties, expressed or implied, as to the accuracy of the information contained herein. Commercial Realty Advisors, Inc. and the agent presenting this opportunity represent the Seller / Lessor, and are neither architects, engineers, inspectors, accountants nor attorneys, and therefore all buyers / tenants must consult with their own architects, engineers, inspectors, accountants or attorneys as to financial, zoning, lot line, handicapped accessibility, flood plain, mechanical, structural, or environmental concerns. Buyer must verify all information and bears all the risk for inaccuracies. Referenced square footage and acreage and sketched outlines are approximate, and this information package is subject to change.



**COMMERCIAL REALTY
ADVISORS, INC.**
222 West Main St. Hyannis, MA
508-862-9000 | comrealty.net

LICENSE #6295
 **MLS**
MULTIPLE LISTING SERVICE