

KEVIN PEPE

508-862-9000, ext.4001
Cell: 508-962-5022
KPepe@ComRealty.net

Commercial Realty Advisors, Inc.

222 West Main St., Hyannis, MA
508-862-9000 | ComRealty.net

**FOR
LEASE**

Commercial
Realty Advisors



669 MAIN ST

FOR LEASE

AREA

DENNIS PORT

\$1,500/MO NNN

±969 Sq Ft

PROPERTY HIGHLIGHTS

669 Main Street, Dennis Port, MA

Located in the heart of the Dennis Port Village Center, **669 Main Street** offers an exceptional opportunity for retailers or professional service users seeking visibility, walkability, and meaningful connection to a growing year-round and seasonal customer base. This ±969 SF first-floor storefront features prominent street-front exposure, large display windows, and immediate access to public parking—positioning tenants to fully capitalize on Main Street's steady traffic and emerging commercial energy. The space benefits from an efficient interior layout suited for boutiques, wellness services, galleries, or office uses, as well as rear access for operational convenience. Surrounded by restaurants, shops, and civic amenities, this location sits within an area undergoing **active revitalization**, where ongoing town-supported efforts aim to enhance pedestrian appeal, encourage mixed-use redevelopment, expand outdoor dining, and strengthen the village's identity as a vibrant destination. As Dennis Port continues its transformation, this affordably priced, high-visibility storefront offers tenants a chance to establish their brand at the center of a downtown district on the rise.



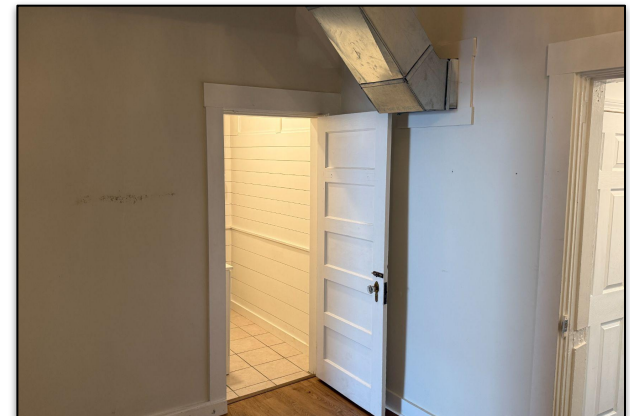
PHOTOS

669 Main Street, Dennis Port, MA



PHOTOS

669 Main Street, Dennis Port, MA



FLOOR PLAN

669 Main Street, Dennis Port, MA



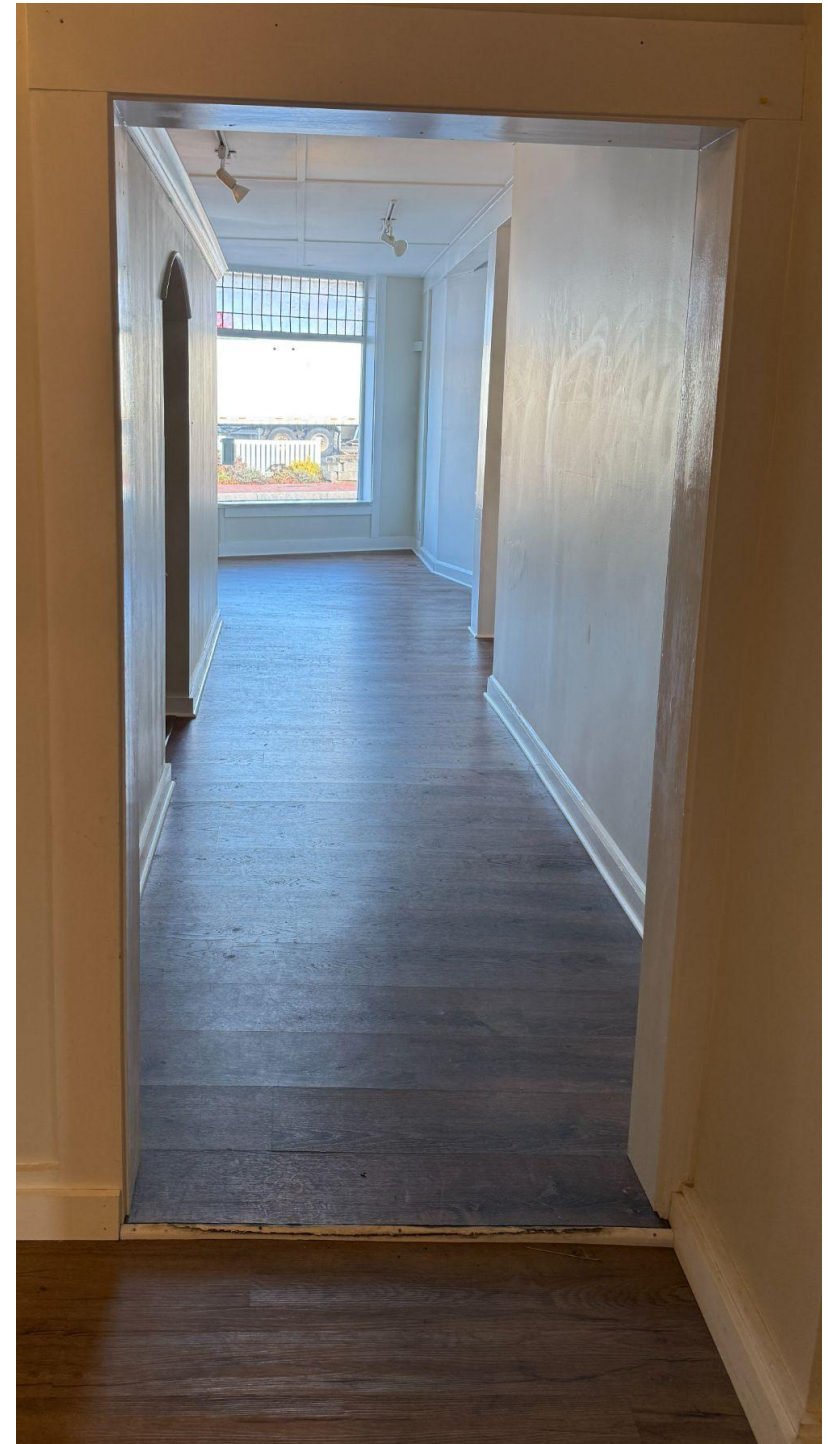
TOTAL: 880 sq. ft

1st floor: 880 sq. ft

CLUDED AREAS: ROOM: 64 sq. ft, UTILITY: 79 sq. ft, UNDEFINED: 12 sq.

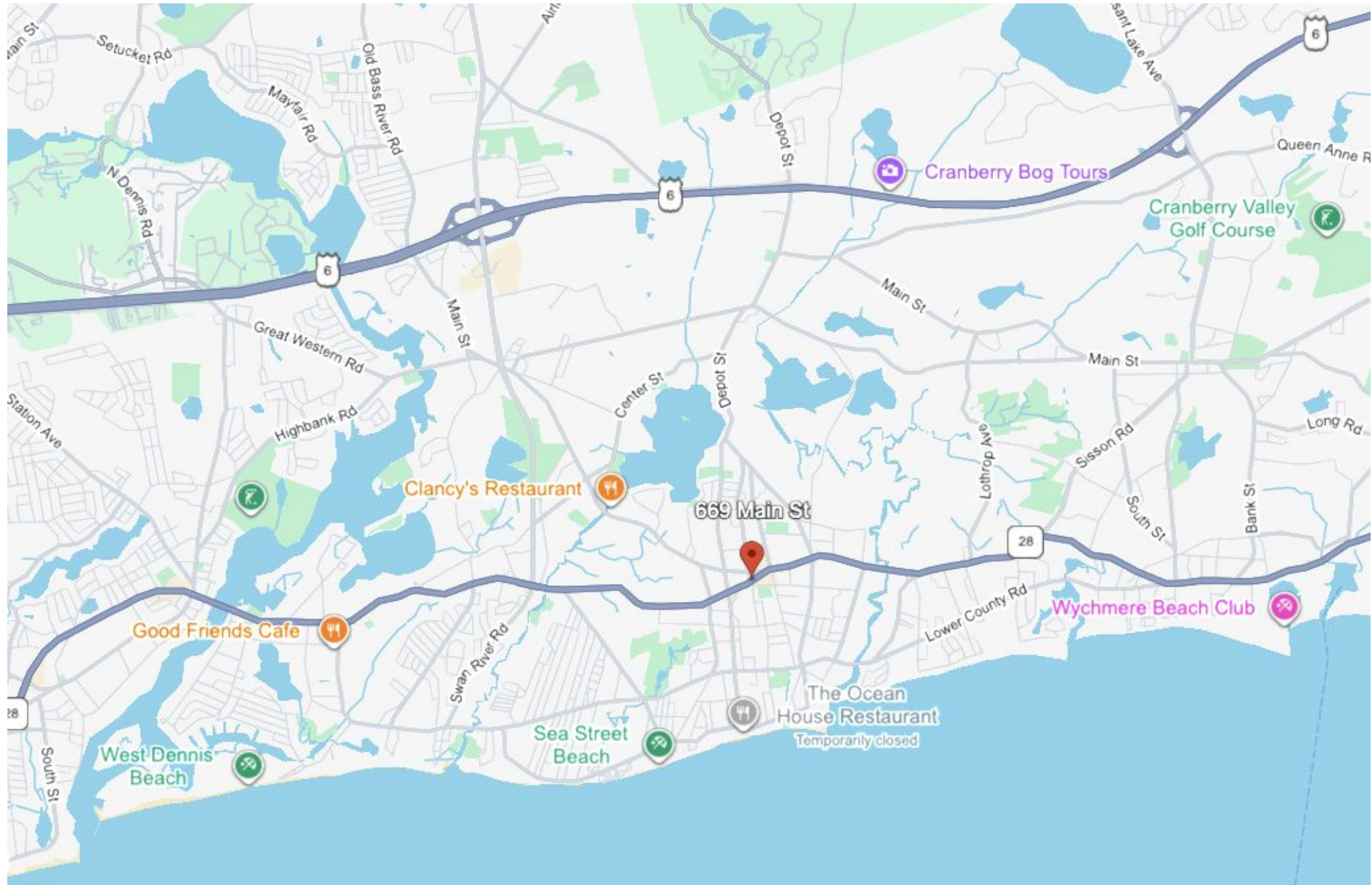
WALLS: 89 sq. ft

FLOOR PLAN CREATED BY CUBICASA APP. MEASUREMENTS DEEMED HIGHLY RELIABLE BUT NOT GUARANTEED.



PROPERTY LOCATION

669 Main Street, Dennis Port, MA



ABOUT

Commercial Realty Advisors, Inc. specializes in commercial and industrial real estate, mergers, acquisitions, joint ventures, divestitures, and other business broker strategies. It is a commercial and real estate brokerage based in Hyannis, Massachusetts, specializing in middle-market transitions. The culture of our firm is that of an investment bank with a premium placed on intellectual vitality, relationship management, and knowledge of geographic markets. A cadre of well-educated and successful experts partner with clients to achieve objectives in a cost and time- effective manner. Our business is broadly based. Our real estate practice includes development, investment, and other commercial sale, lease, and management arrangements. Transactions include manufacturing, retailing, food processing, restaurant and hospitality, golf course, marinas, and other businesses.



SCAN THE QR
CODE TO VISIT
COMREALTY.NET!

Commercial Realty Advisors' Disclaimer

This information has been secured from sources we believe to be reliable, but we make no representation or warranties, expressed or implied, as to the accuracy of the information contained herein.

Commercial Realty Advisors, Inc. and the agent presenting this opportunity represent the Seller / Lessor, and are neither architects, engineers, inspectors, accountants nor attorneys, and therefore all buyers / tenants must consult with their own architects, engineers, inspectors, accountants or attorneys as to financial, zoning, lot line, handicapped accessibility, flood plain, mechanical, structural, or environmental concerns. Buyer must verify all information and bears all the risk for inaccuracies. Referenced square footage and acreage and sketched outlines are approximate, and this information package is subject to change.



**COMMERCIAL REALTY
ADVISORS, INC.**
222 West Main St. Hyannis, MA
508-862-9000 | comrealty.net

LICENSE #6295
 **MLS**
REALTOR MULTIPLE LISTING SERVICE