

**KEVIN PEPE**

508-862-9000, ext.4001  
Cell: 508-962-5022  
KPepe@ComRealty.net

**Commercial Realty Advisors, Inc.**

222 West Main St., Hyannis, MA  
508-862-9000 | ComRealty.net

**FOR  
LEASE**

Commercial  
**Realty Advisors**



**665 MAIN ST**

**FOR LEASE**

**AREA**

**DENNIS PORT**

**\$2,000/MO NNN**

**±1,129 Sq Ft**

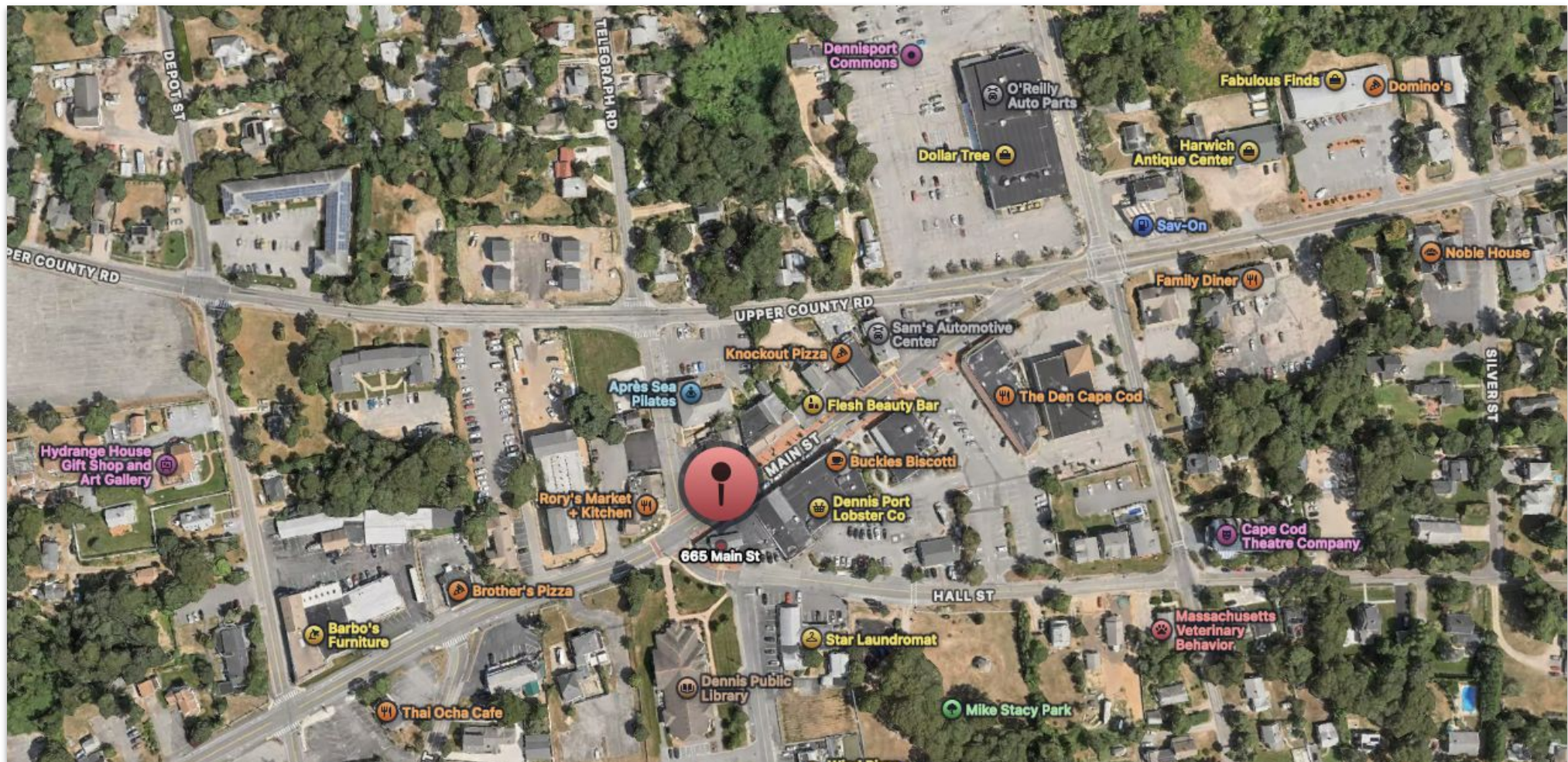


# PROPERTY HIGHLIGHTS

665 Main Street, Dennis Port, MA

Positioned along the active Main Street corridor in Dennis Port Village, **665 Main Street** offers an attractive  $\pm 1,129$  sq. ft. storefront with excellent visibility and direct pedestrian engagement. Large display windows, an efficient rectangular layout, and both front and rear access make this space well-suited for retail, wellness services, boutique operations, or a professional office seeking a central village location.

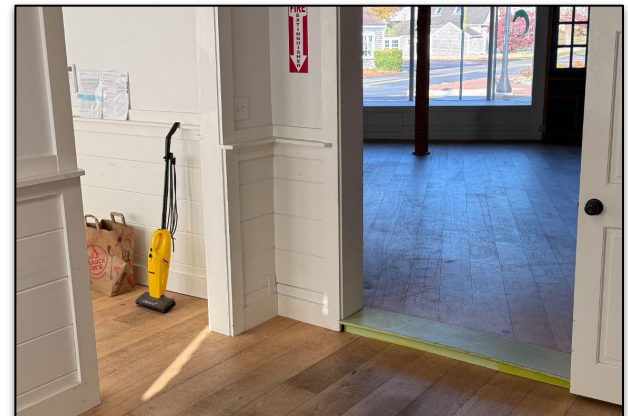
Tenants benefit from immediate proximity to public parking, local dining, neighborhood retailers, and the well-traveled spine of Dennis Port's commercial district. The area continues to see meaningful public and private investment—streetscape updates, new business activity, and village-focused enhancement efforts—all contributing to a more vibrant and walkable downtown. Offered at **\$2,000/month NNN**, this larger-format storefront gives businesses the space, visibility, and community presence needed to grow within an improving Cape Cod village environment.





# PHOTOS

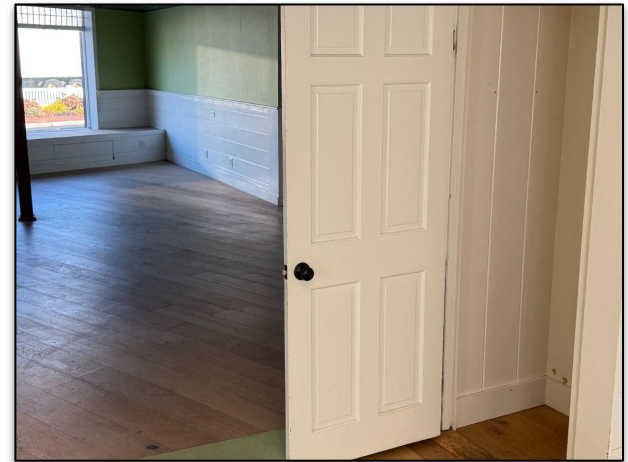
665 Main Street, Dennis Port, MA





# PHOTOS

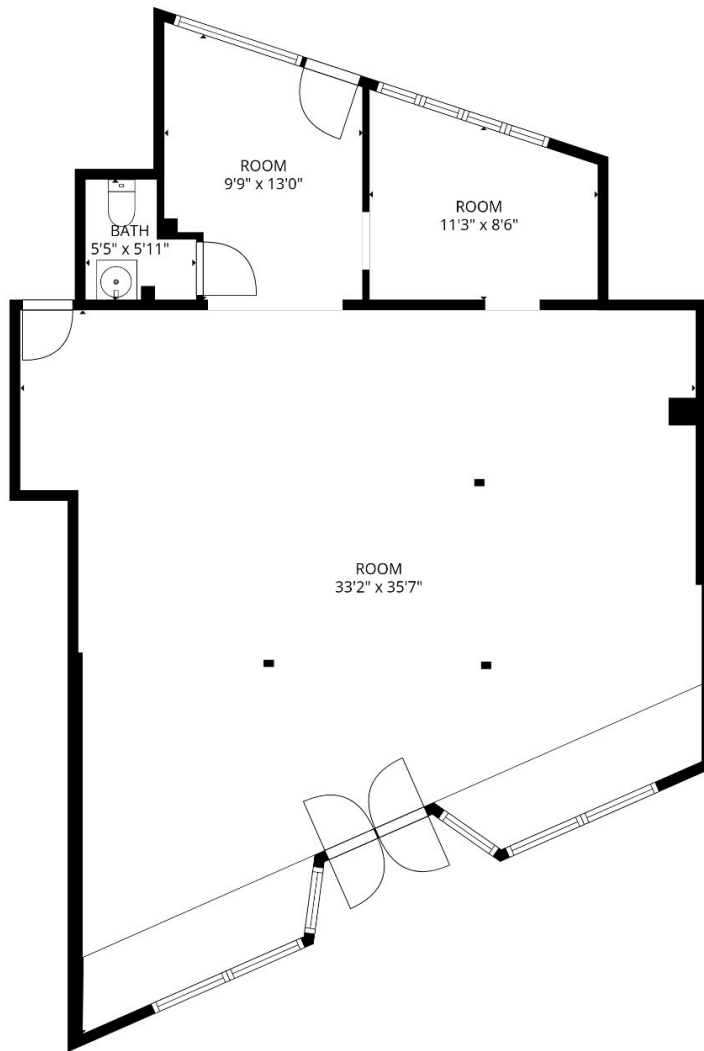
665 Main Street, Dennis Port, MA





# FLOOR/SITE PLANS

665 Main Street, Dennis Port, MA



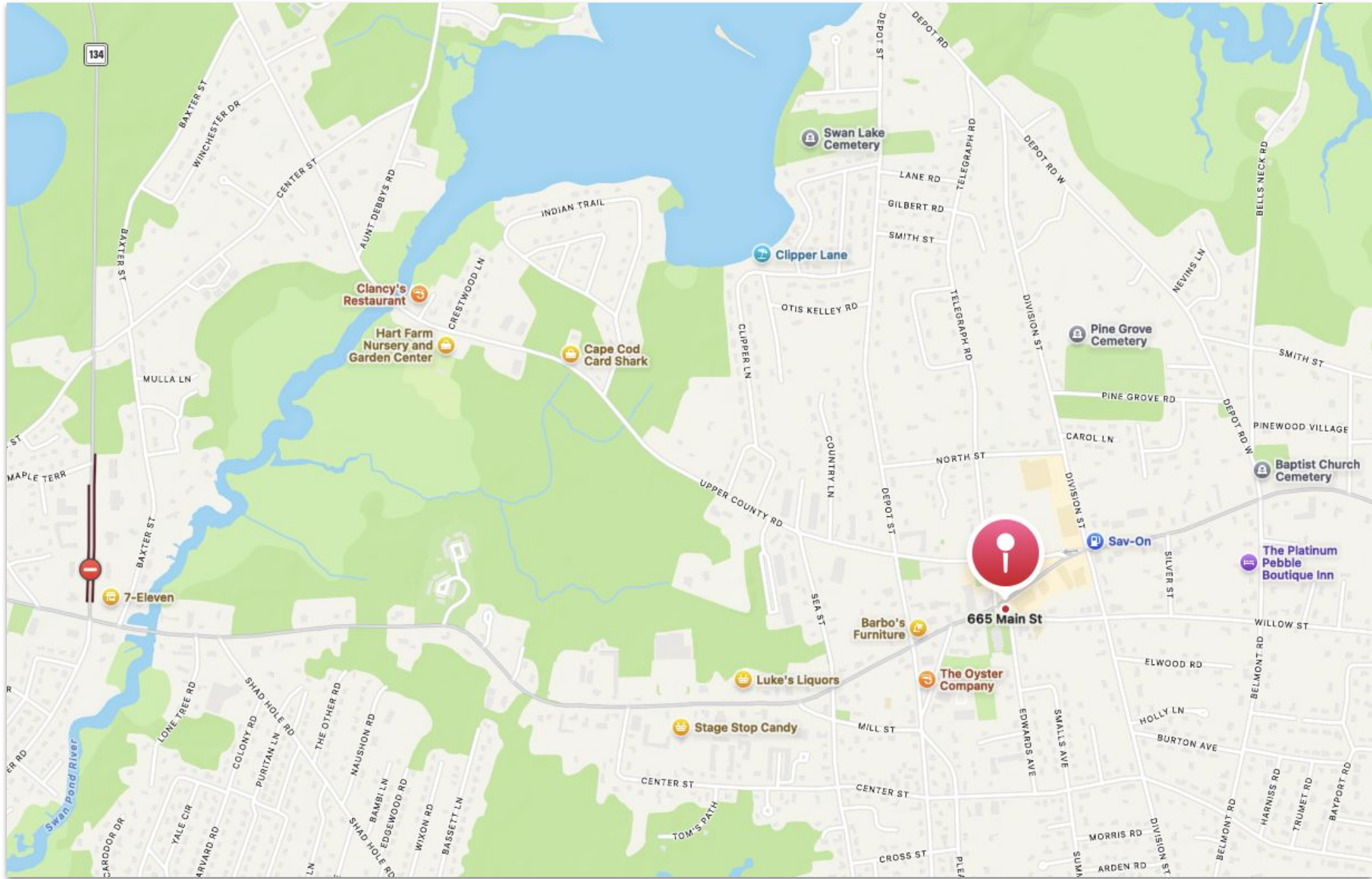
**TOTAL: 1129 sq. ft**  
1st floor: 1129 sq. ft  
EXCLUDED AREAS: WALLS: 87 sq. ft

FLOOR PLAN CREATED BY CUBICASA APP. MEASUREMENTS DEEMED HIGHLY RELIABLE BUT NOT GUARANTEED.



# PROPERTY LOCATION

665 Main Street, Dennis Port, MA





## ABOUT

Commercial Realty Advisors, Inc. specializes in commercial and industrial real estate, mergers, acquisitions, joint ventures, divestitures, and other business broker strategies. It is a commercial and real estate brokerage based in Hyannis, Massachusetts, specializing in middle-market transitions. The culture of our firm is that of an investment bank with a premium placed on intellectual vitality, relationship management, and knowledge of geographic markets. A cadre of well-educated and successful experts partner with clients to achieve objectives in a cost and time- effective manner. Our business is broadly based. Our real estate practice includes development, investment, and other commercial sale, lease, and management arrangements. Transactions include manufacturing, retailing, food processing, restaurant and hospitality, golf course, marinas, and other businesses.



SCAN THE QR  
CODE TO VISIT  
COMREALTY.NET!

## Commercial Realty Advisors' Disclaimer

This information has been secured from sources we believe to be reliable, but we make no representation or warranties, expressed or implied, as to the accuracy of the information contained herein.

Commercial Realty Advisors, Inc. and the agent presenting this opportunity represent the Seller / Lessor, and are neither architects, engineers, inspectors, accountants nor attorneys, and therefore all buyers / tenants must consult with their own architects, engineers, inspectors, accountants or attorneys as to financial, zoning, lot line, handicapped accessibility, flood plain, mechanical, structural, or environmental concerns. Buyer must verify all information and bears all the risk for inaccuracies. Referenced square footage and acreage and sketched outlines are approximate, and this information package is subject to change.



**COMMERCIAL REALTY  
ADVISORS, INC.**

222 West Main St. Hyannis, MA  
508-862-9000 | comrealty.net

**LICENSE #6295**

