

INDUSTRIAL BUILDING/YARD SPACE

Centrally Located | ±1,925 Sq. Ft.

KEVIN PEPE

☎ Office: 508-862-9000

☎ Cell: 508-962-5022

✉ KPepe@ComRealty.net

📍 222 West Main Street, Hyannis, MA 02601

🌐 <https://comrealty.net/>

**223 BOG ROAD
W. Yarmouth, MA**

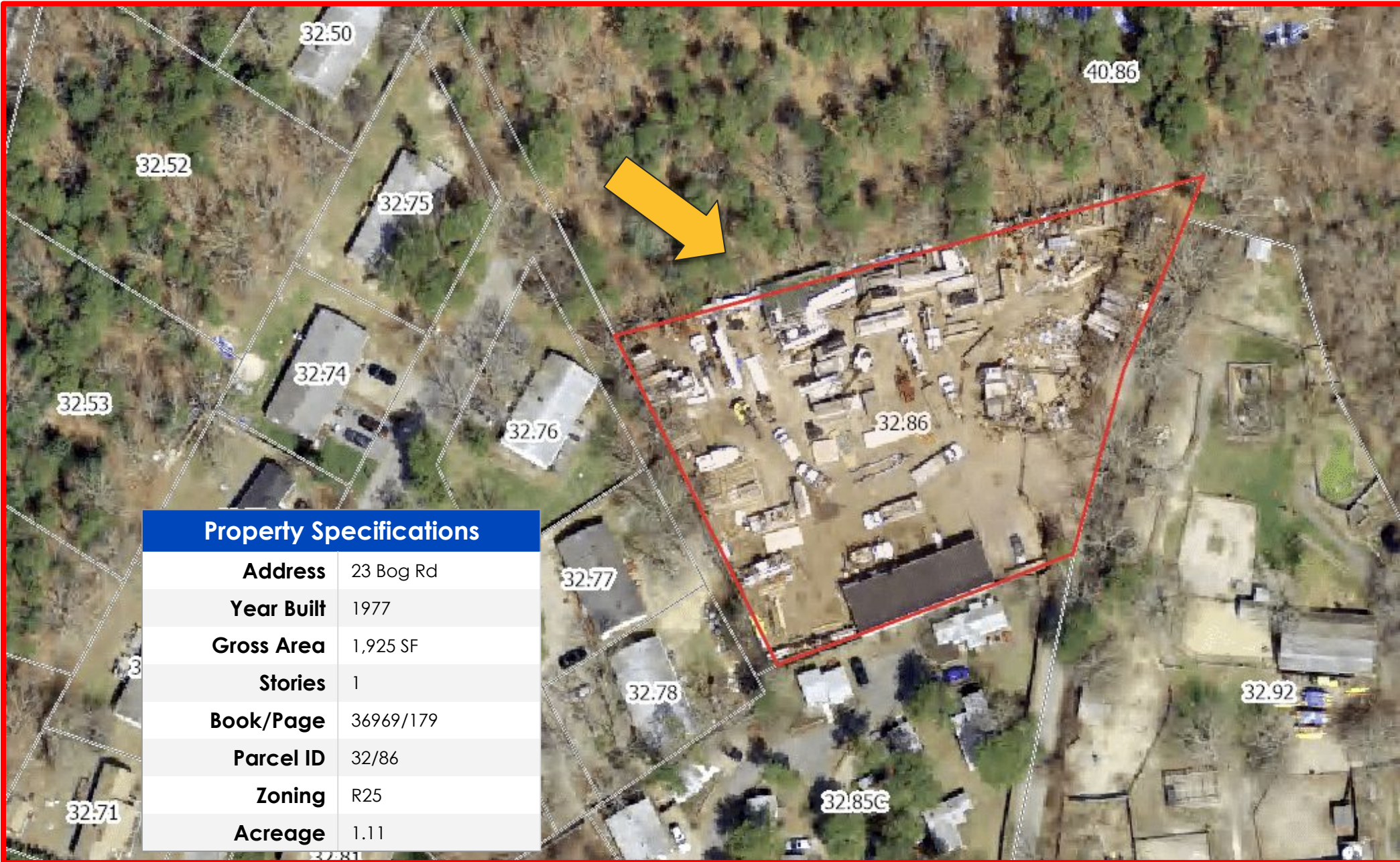
FOR LEASE

\$6,500/MO. NNN

- The Property is currently configured as a Auto Repair Business Lot
- The Property is Zoned R25 (Pre-Existing Non-Conforming Use)

PROPERTY MAP

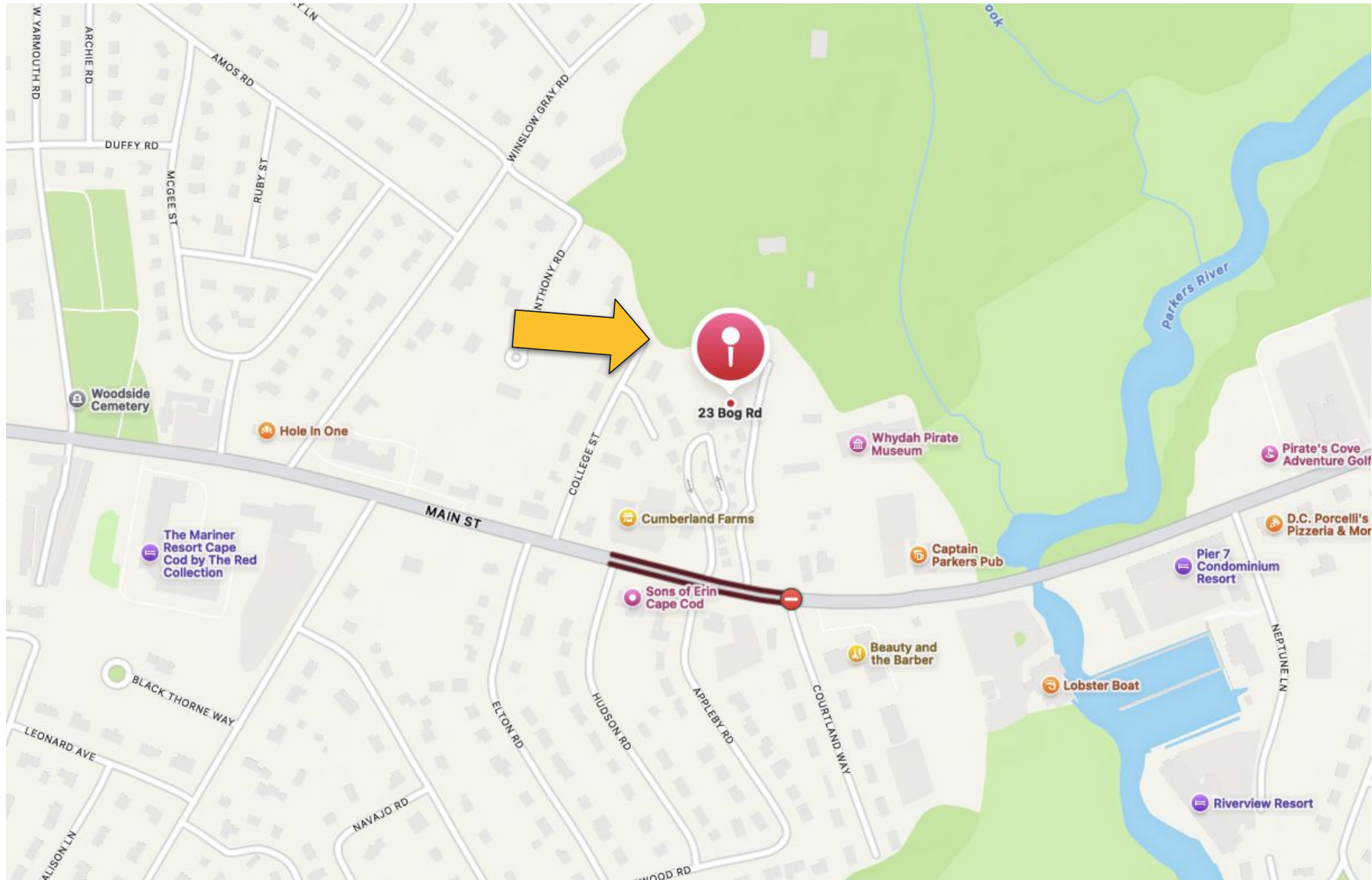
23 Bog Road, West Yarmouth, MA 02673



Property Specifications	
Address	23 Bog Rd
Year Built	1977
Gross Area	1,925 SF
Stories	1
Book/Page	36969/179
Parcel ID	32/86
Zoning	R25
Acreage	1.11

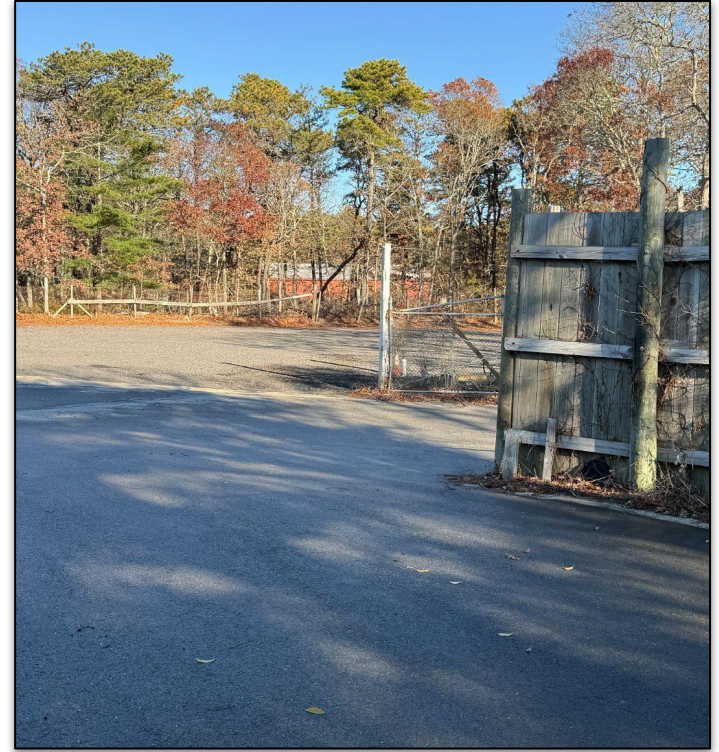
PROPERTY LOCATION

23 Bog Road, West Yarmouth, MA 02673



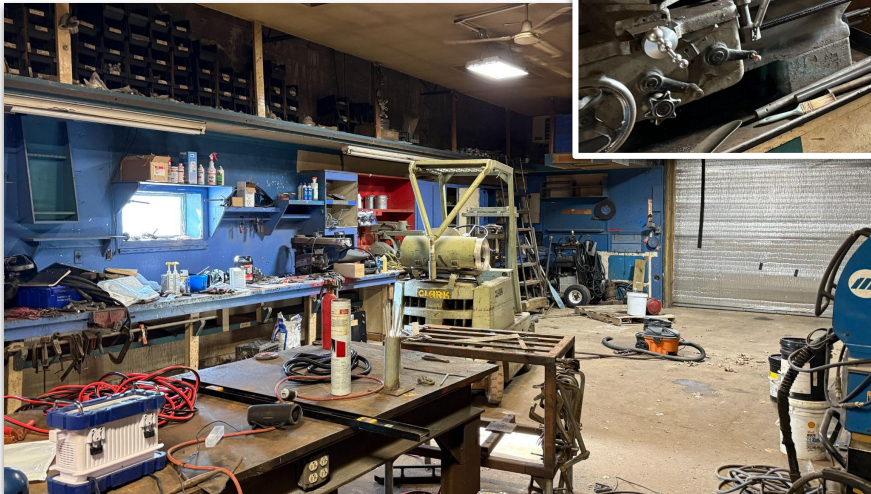
EXTERIOR PICTURES

23 Bog Road, West Yarmouth, MA 02673



INTERIOR PICTURES

23 Bog Road, West Yarmouth, MA 02673



INTERIOR PICTURES

23 Bog Road, West Yarmouth, MA 02673



Commercial
Realty Advisors

Commercial Realty Advisors' Disclaimer

This information has been secured from sources we believe to be reliable, but we make no representation or warranties, expressed or implied, as to the accuracy of the information contained herein. Commercial Realty Advisors, Inc. and the agent presenting this opportunity represent the Seller / Lessor, and are neither architects, engineers, inspectors, accountants nor attorneys, and therefore all buyers / tenants must consult with their own architects, engineers, inspectors, accountants or attorneys as to financial, zoning, lot line, handicapped accessibility, flood plain, mechanical, structural, or environmental concerns. Buyer must verify all information and bears all the risk for inaccuracies. Referenced square footage and acreage and sketched outlines are approximate, and this information package is subject to change.

ABOUT

Commercial Realty Advisors, Inc. specializes in commercial and industrial real estate, mergers, acquisitions, joint ventures, divestitures, and other business broker strategies. It is a commercial and real estate brokerage based in Hyannis, Massachusetts, specializing in middle-market transitions. The culture of our firm is that of an investment bank with a premium placed on intellectual vitality, relationship management, and knowledge of geographic markets. A cadre of well-educated and successful experts partner with clients to achieve objectives in a cost and time- effective manner. Our business is broadly based. Our real estate practice includes development, investment, and other commercial sale, lease, and management arrangements. Transactions include manufacturing, retailing, food processing, restaurant and hospitality, golf course, marinas, and other businesses.



SCAN THE QR
CODE TO VISIT
COMREALTY.NET!



**COMMERCIAL REALTY
ADVISORS, INC.**

222 West Main St. Hyannis, MA
508-862-9000 | comrealty.net

LICENSE #6295

