

Commercial  
**Realty Advisors**

**OFFERING MEMORANDUM**

*Medical/ Office/ Retail Space Available in  
Major Plaza, "Sandwich Commons"*

**FOR  
LEASE**

**KEVIN PEPE**

Office: 508-862-9000

Cell: 508-962-5022

KPepe@ComRealty.net

222 West Main Street, Hyannis, MA 02601

<https://comrealty.net/>

**\$20/ Sq. Ft. NNN**

**SANDWICH  
PHYSICAL THERAPY**

**SPACE  
AVAILABLE** comrealty.net **508  
862-9000**  
Commercial  
Realty Advisors

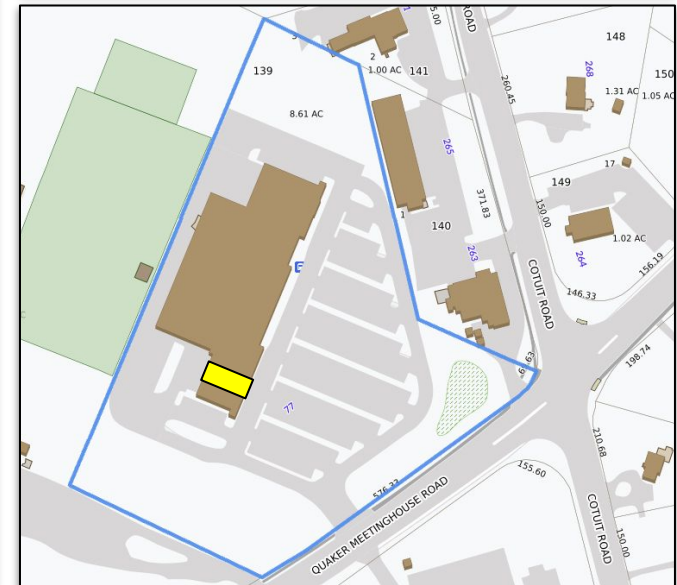
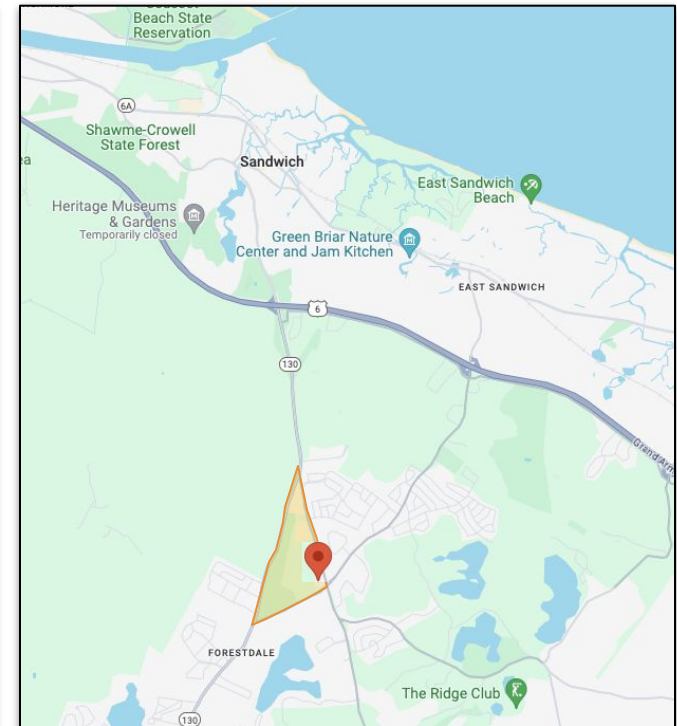
**SPACE  
AVAILABLE**  
**508  
862-9000**  
comrealty.net  
Commercial  
Realty Advisors

**77 QUAKER MEETINGHOUSE ROAD, SANDWICH**  
**1,300± SF**



# PROPERTY LOCATION

77 Quaker Meetinghouse Road, Unit QMH2, Sandwich, MA





# PROPERTY SPECIFICATIONS

77 Quaker Meetinghouse Road, Unit QMH2, Sandwich, MA

This 1,300 square foot retail unit, located within a bustling plaza anchored by Stop and Shop and CVS Pharmacy, offers prime visibility at the intersection of Quaker Meetinghouse Road and Cotuit Road. Featuring hardwood flooring, natural light through two large front windows, and essential amenities including a utility sink and private half bath, this space is tailored for entrepreneurial success. Priced at \$20 per square foot NNN, seize the chance to lease this strategically positioned gem and elevate your business presence in Sandwich's thriving 'Golden Triangle' commercial landscape.

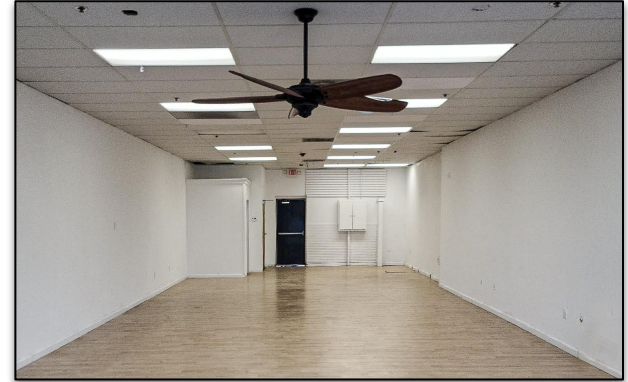
Year Built	1989
Total Building Size	54,044 SF
Available Space	1,300 SF
Stories	1
Style	Supermarket
Parcel ID	17-139-0
Book/Page	20426-299
Zoning	B2





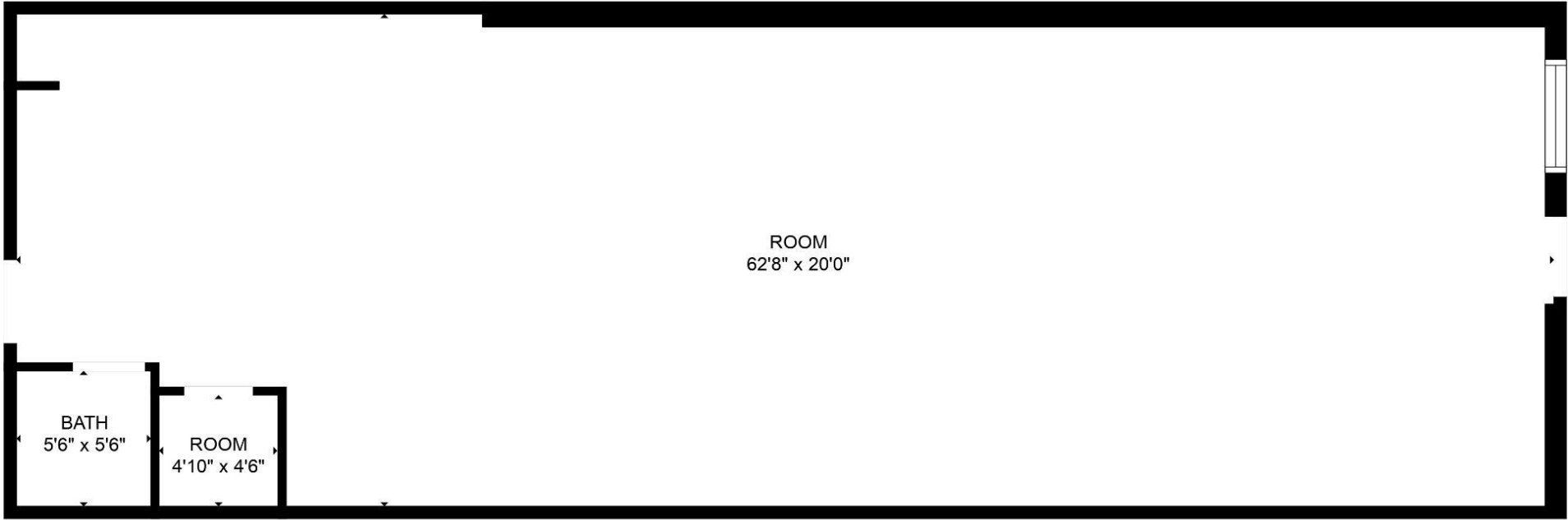
# PHOTOS

77 Quaker Meetinghouse Road, Unit QMH2, Sandwich, MA



# FLOOR PLANS

77 Quaker Meetinghouse Road, Unit QMH2, Sandwich, MA



FLOOR PLAN CREATED BY CUBICASA APP. MEASUREMENTS DEEMED HIGHLY RELIABLE BUT NOT GUARANTEED.



Commercial  
**Realty Advisors**

## Commercial Realty Advisors' Disclaimer

This information has been secured from sources we believe to be reliable, but we make no representation or warranties, expressed or implied, as to the accuracy of the information contained herein.

Commercial Realty Advisors, Inc. and the agent presenting this opportunity represent the Seller / Lessor, and are neither architects, engineers, inspectors, accountants nor attorneys, and therefore all buyers / tenants must consult with their own architects, engineers, inspectors, accountants or attorneys as to financial, zoning, lot line, handicapped accessibility, flood plain, mechanical, structural, or environmental concerns. Buyer must verify all information and bears all the risk for inaccuracies. Referenced square footage and acreage and sketched outlines are approximate, and this information package is subject to change.

## ABOUT

Commercial Realty Advisors, Inc. specializes in commercial and industrial real estate, mergers, acquisitions, joint ventures, divestitures, and other business broker strategies. It is a commercial and real estate brokerage based in Hyannis, Massachusetts, specializing in middle-market transitions. The culture of our firm is that of an investment bank with a premium placed on intellectual vitality, relationship management, and knowledge of geographic markets. A cadre of well-educated and successful experts partner with clients to achieve objectives in a cost and time- effective manner. Our business is broadly based. Our real estate practice includes development, investment, and other commercial sale, lease, and management arrangements. Transactions include manufacturing, retailing, food processing, restaurant and hospitality, golf course, marinas, and other businesses.



SCAN THE QR  
CODE TO VISIT  
COMREALTY.NET!



**COMMERCIAL REALTY  
ADVISORS, INC.**  
222 West Main St. Hyannis, MA  
508-862-9000 | comrealty.net

**LICENSE #6295**  
 **MLS**  
REALTOR MULTIPLE LISTING SERVICE