

Commercial
Realty Advisors

OFFERING MEMORANDUM

*Medical/ Office/ Retail Space Available in
Major Plaza, "Sandwich Commons"*

**FOR
LEASE**

\$20/ Sq. Ft. NNN

**SPACE
AVAILABLE**

KEVIN PEPE

Office: 508-862-9000

Cell: 508-962-5022

KPepe@ComRealty.net

222 West Main Street, Hyannis, MA 02601

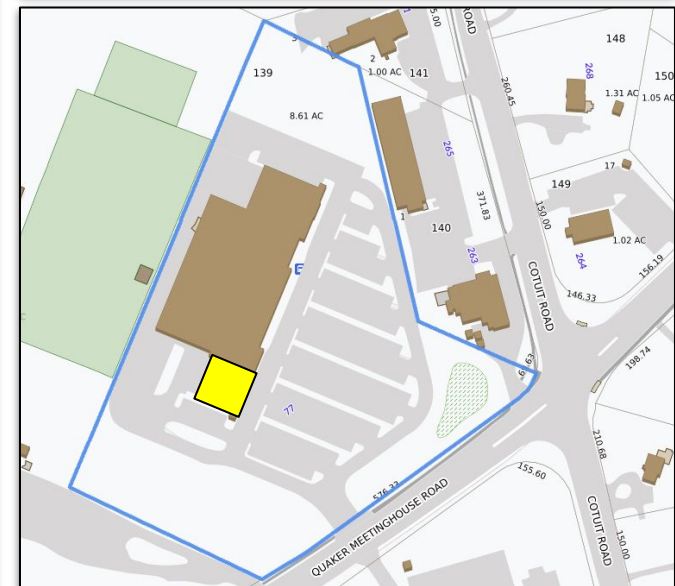
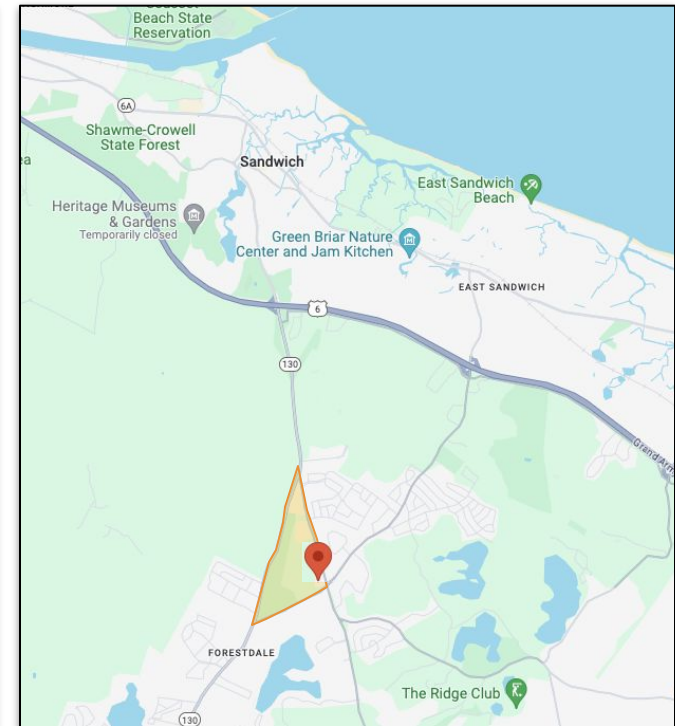
<https://comrealty.net/>

Join Sandwich's
'Golden Triangle'
of Businesses!

**77 QUAKER MEETINGHOUSE ROAD, SANDWICH
5,000± SF**

PROPERTY LOCATION

77 Quaker Meetinghouse Road, Sandwich



PROPERTY SPECIFICATIONS

77 Quaker Meetinghouse Road, Unit QMH1, Sandwich

This 5,000 square foot retail unit, located within a bustling plaza anchored by Stop and Shop and CVS Pharmacy, offers prime visibility at the intersection of Quaker Meetinghouse Road and Cotuit Road. Featuring hardwood flooring, natural light through large front windows, and essential amenities including a utility sink and 2 private restrooms, this space is tailored for entrepreneurial success. Priced at \$22.50 per square foot NNN, seize the chance to lease this strategically positioned gem and elevate your business presence in Sandwich's thriving 'Golden Triangle' commercial landscape.

Year Built 1989

Total Building Size 54,044 SF

Available Space 5,000 SF

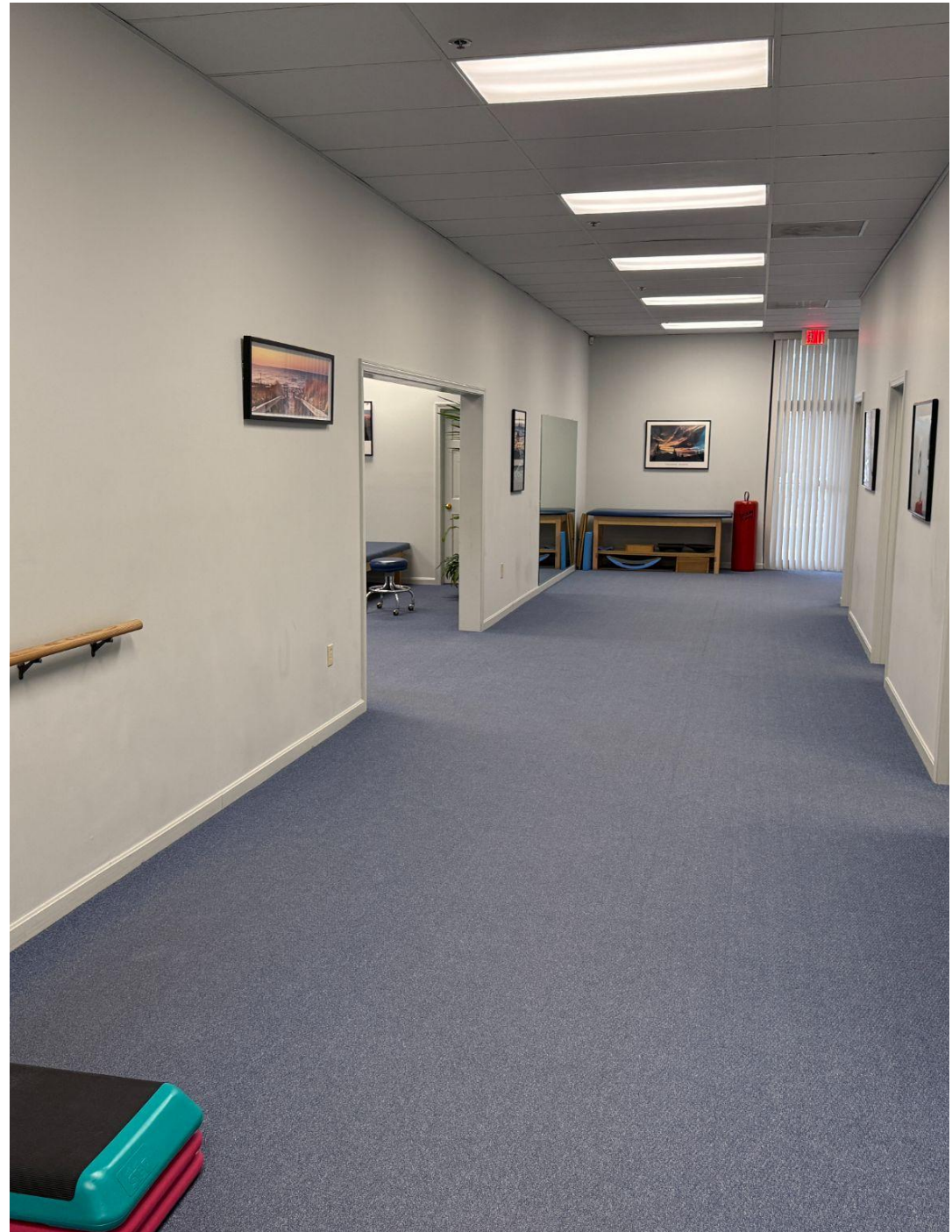
Stories 1

Style Supermarket

Parcel ID 17-139-0

Book/Page 20426-299

Zoning B2



PHOTOS

77 Quaker Meetinghouse Road, Unit QMH1, Sandwich



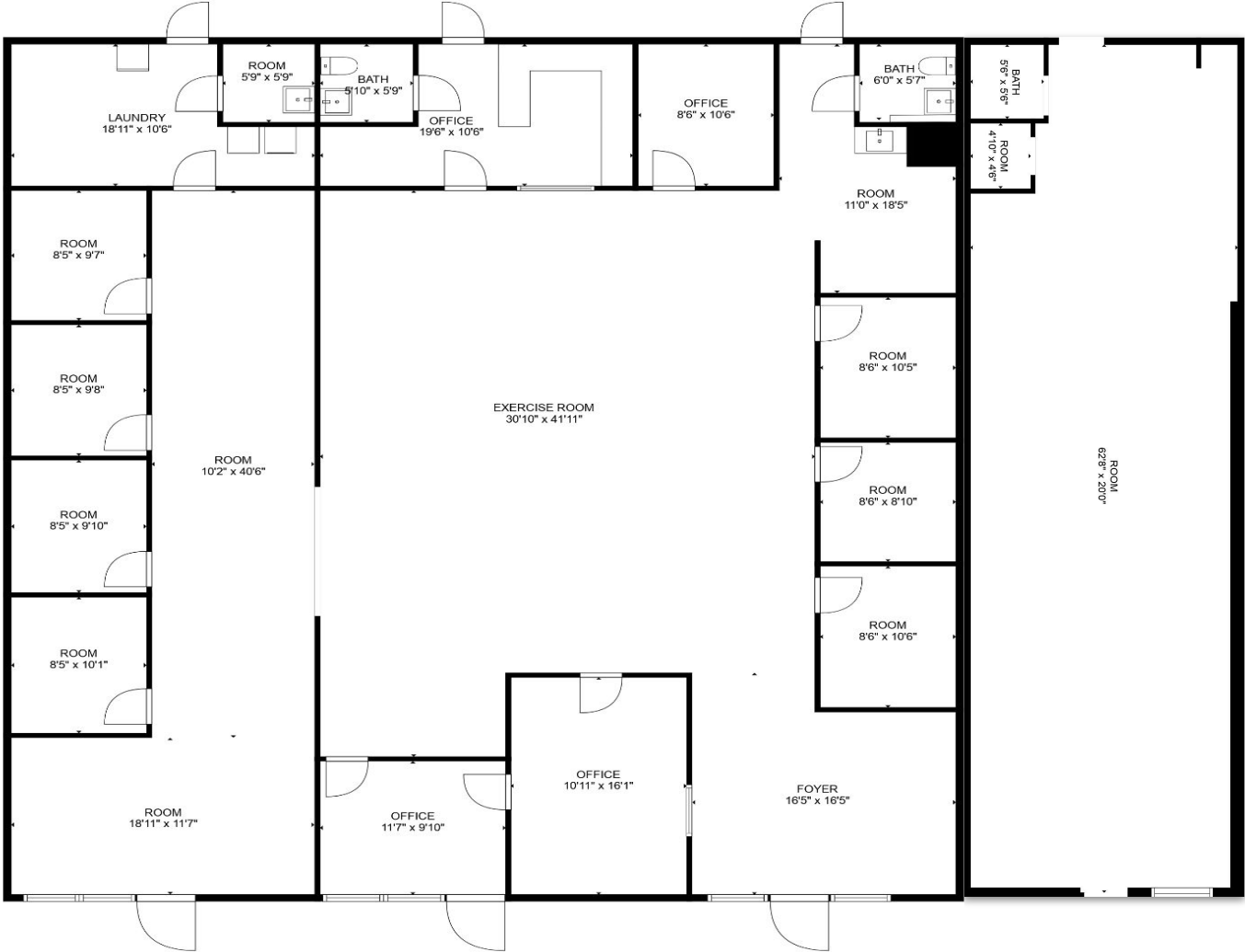
PHOTOS

77 Quaker Meetinghouse Road, Unit QMH2, Sandwich, MA



FLOOR PLANS

77 Quaker Meetinghouse Road, Sandwich, MA



FLOOR PLAN CREATED BY CUBICASA APP, MEASUREMENTS DEEMED HIGHLY RELIABLE BUT NOT GUARANTEED.

Commercial
Realty Advisors

Commercial Realty Advisors' Disclaimer

This information has been secured from sources we believe to be reliable, but we make no representation or warranties, expressed or implied, as to the accuracy of the information contained herein.

Commercial Realty Advisors, Inc. and the agent presenting this opportunity represent the Seller / Lessor, and are neither architects, engineers, inspectors, accountants nor attorneys, and therefore all buyers / tenants must consult with their own architects, engineers, inspectors, accountants or attorneys as to financial, zoning, lot line, handicapped accessibility, flood plain, mechanical, structural, or environmental concerns. Buyer must verify all information and bears all the risk for inaccuracies. Referenced square footage and acreage and sketched outlines are approximate, and this information package is subject to change.

ABOUT

Commercial Realty Advisors, Inc. specializes in commercial and industrial real estate, mergers, acquisitions, joint ventures, divestitures, and other business broker strategies. It is a commercial and real estate brokerage based in Hyannis, Massachusetts, specializing in middle-market transitions. The culture of our firm is that of an investment bank with a premium placed on intellectual vitality, relationship management, and knowledge of geographic markets. A cadre of well-educated and successful experts partner with clients to achieve objectives in a cost and time- effective manner. Our business is broadly based. Our real estate practice includes development, investment, and other commercial sale, lease, and management arrangements. Transactions include manufacturing, retailing, food processing, restaurant and hospitality, golf course, marinas, and other businesses.



SCAN THE QR
CODE TO VISIT
COMREALTY.NET!



**COMMERCIAL REALTY
ADVISORS, INC.**
222 West Main St. Hyannis, MA
508-862-9000 | comrealty.net

LICENSE #6295
 **MLS**
REALTOR MULTIPLE LISTING SERVICE