

OFFERING MEMORANDUM

Lower Level Professional Office Space for Lease

**FOR
LEASE**

KEVIN PEPE

📞 508-862-9000 📠 Fax: 508-862-9200

📱 Cell: 508-962-5022

✉️ KPepe@ComRealty.net

📍 222 West Main Street, Hyannis, MA

🌐 ComRealty.net



**CALL TODAY TO SCHEDULE A
SHOWING!**

7 PARKER ROAD

LOWER LEVEL

AREA

Osterville, MA

\$2,500 ALL INCLUSIVE!

1,200+/- SQ. FT.

PROPERTY SUMMARY

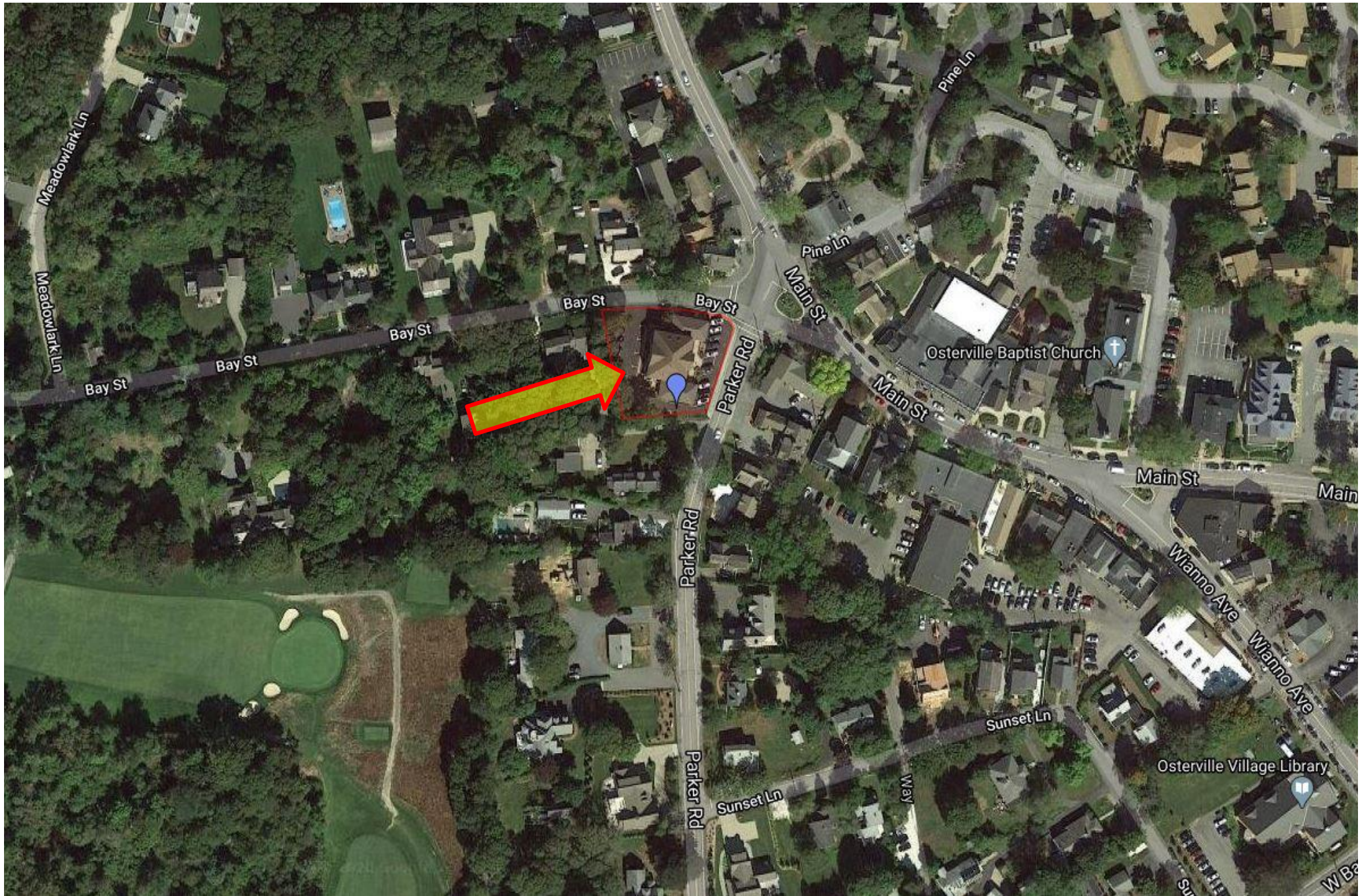
7 Parker Road, Lower Level, Osterville, MA 02563

- Consists of 1 lower level unit totaling $\pm 1,200$ sq. ft.
- Currently configured as a professional office
- Private office & open work space
- Reception/Waiting area
- Private restroom
- Climate controlled – forced hot air heat/central air conditioning
- Generous on site parking
- Centrally located at the Corner of Main Street and Parker Road in Osterville



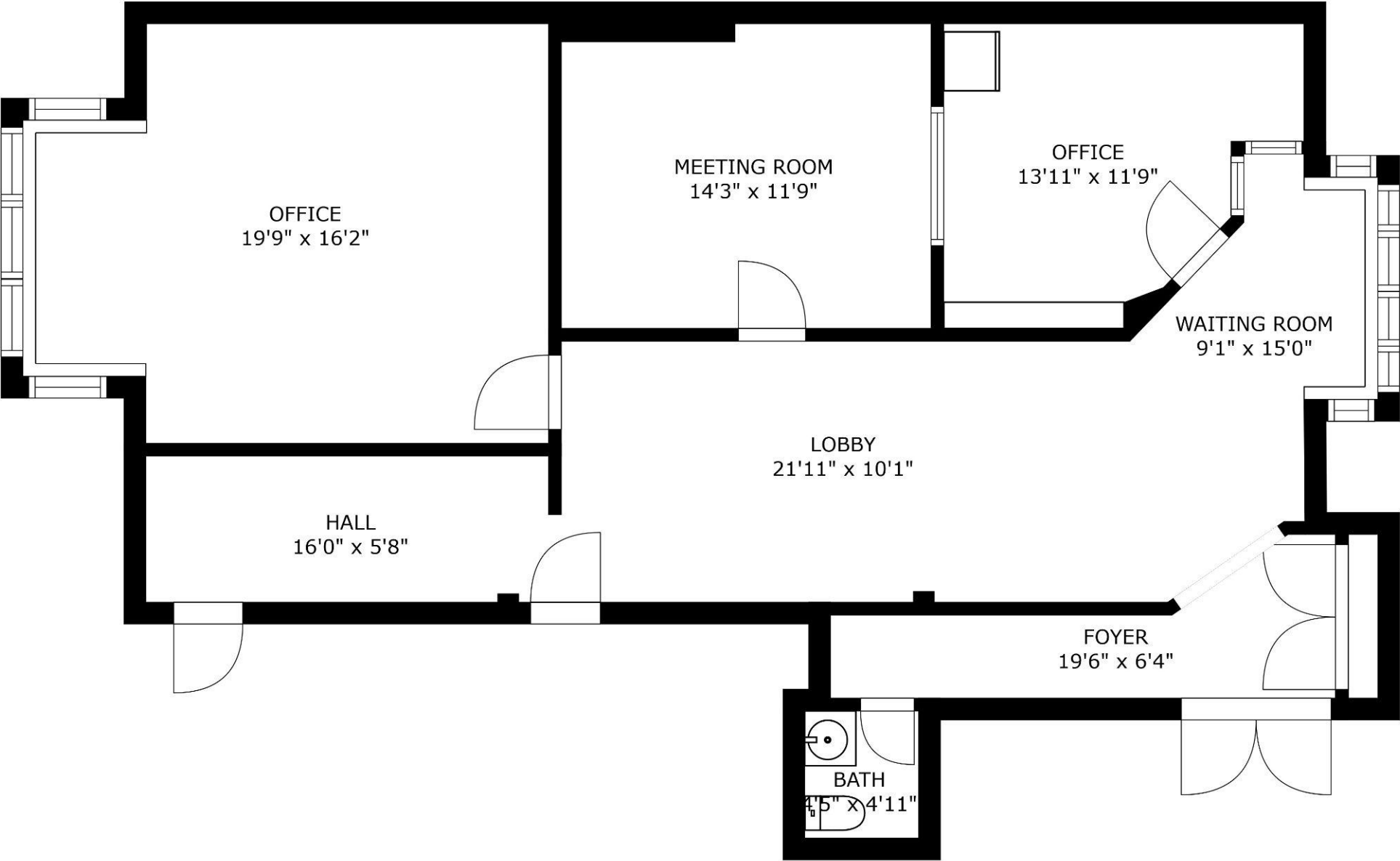
PROPERTY LOCATION

7 Parker Road, Lower Level, Osterville, MA 02563



FLOOR PLAN

7 Parker Road, Lower Level, Osterville, MA



This FlōPlan floor plan is intended to represent the flow of the property and may not accurately represent the dimensions of each room or the property as a whole.
Copyright © 2022 Financial Business Systems, Inc. All rights reserved.

FlōPlan

Commercial
Realty Advisors

Commercial Realty Advisors' Disclaimer

This information has been secured from sources we believe to be reliable, but we make no representation or warranties, expressed or implied, as to the accuracy of the information contained herein. Commercial Realty Advisors, Inc. and the agent presenting this opportunity represent the Seller / Lessor, and are neither architects, engineers, inspectors, accountants nor attorneys, and therefore all buyers / tenants must consult with their own architects, engineers, inspectors, accountants or attorneys as to financial, zoning, lot line, handicapped accessibility, flood plain, mechanical, structural, or environmental concerns. Buyer must verify all information and bears all the risk for inaccuracies. Referenced square footage and acreage and sketched outlines are approximate, and this information package is subject to change.

ABOUT

Commercial Realty Advisors, Inc. specializes in commercial and industrial real estate, mergers, acquisitions, joint ventures, divestitures, and other business broker strategies. It is a commercial and real estate brokerage based in Hyannis, Massachusetts, specializing in middle-market transitions. The culture of our firm is that of an investment bank with a premium placed on intellectual vitality, relationship management, and knowledge of geographic markets. A cadre of well-educated and successful experts partner with clients to achieve objectives in a cost and time- effective manner. Our business is broadly based. Our real estate practice includes development, investment, and other commercial sale, lease, and management arrangements. Transactions include manufacturing, retailing, food processing, restaurant and hospitality, golf course, marinas, and other businesses.



SCAN THE QR
CODE TO VISIT
COMREALTY.NET!



**COMMERCIAL REALTY
ADVISORS, INC.**

222 West Main St. Hyannis, MA
508-862-9000 | comrealty.net

LICENSE #6295

