

OFFERING MEMORANDUM

Retail/Office Spaces Available

**FOR
LEASE**

KEVIN PEPE

Office: 508-862-9000

Cell: 508-962-5022

KPepe@ComRealty.net

222 West Main Street, Hyannis, MA 02601

<https://comrealty.net/>

606 MAIN ST. UNITS C1, C2

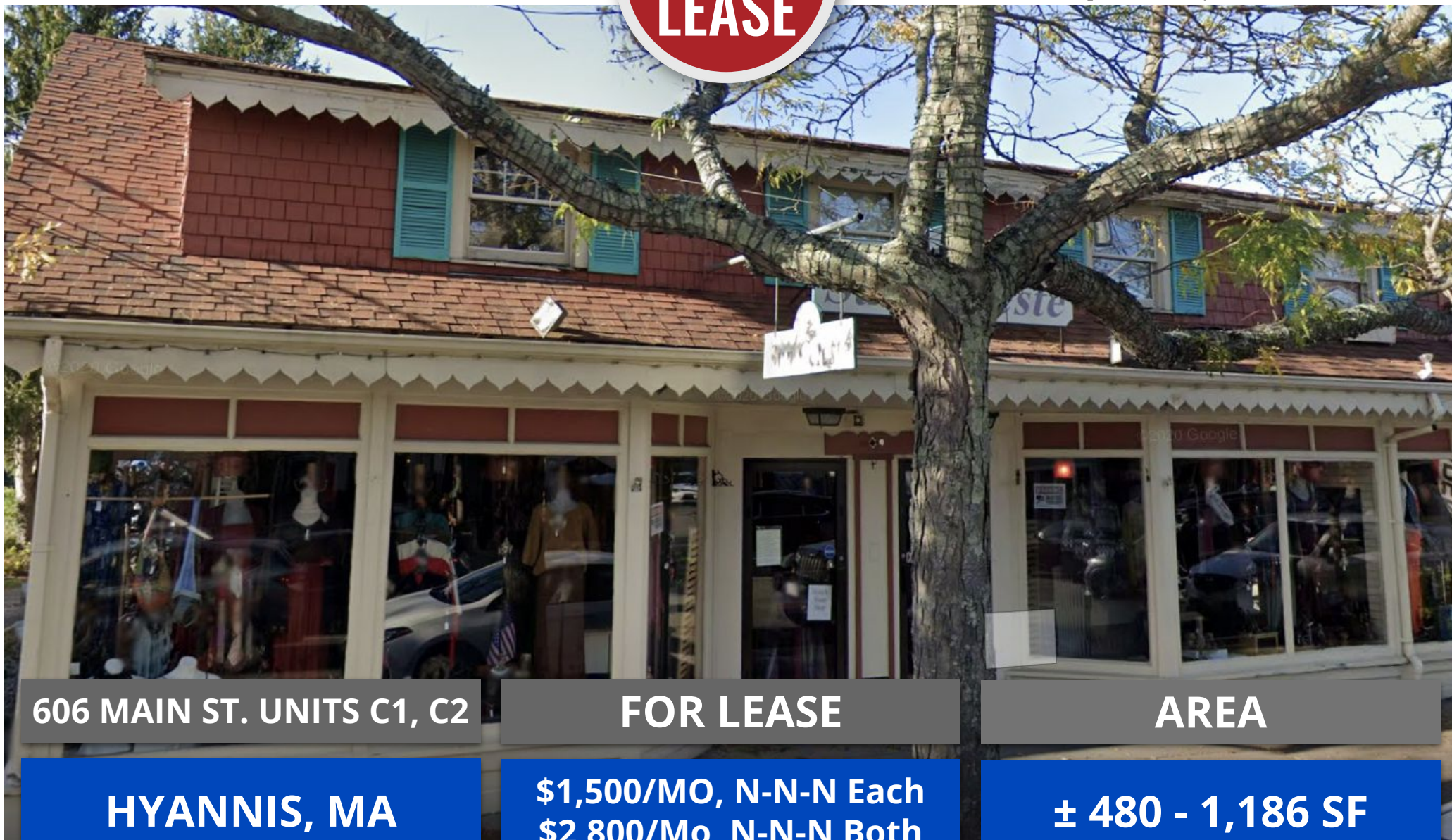
FOR LEASE

AREA

HYANNIS, MA

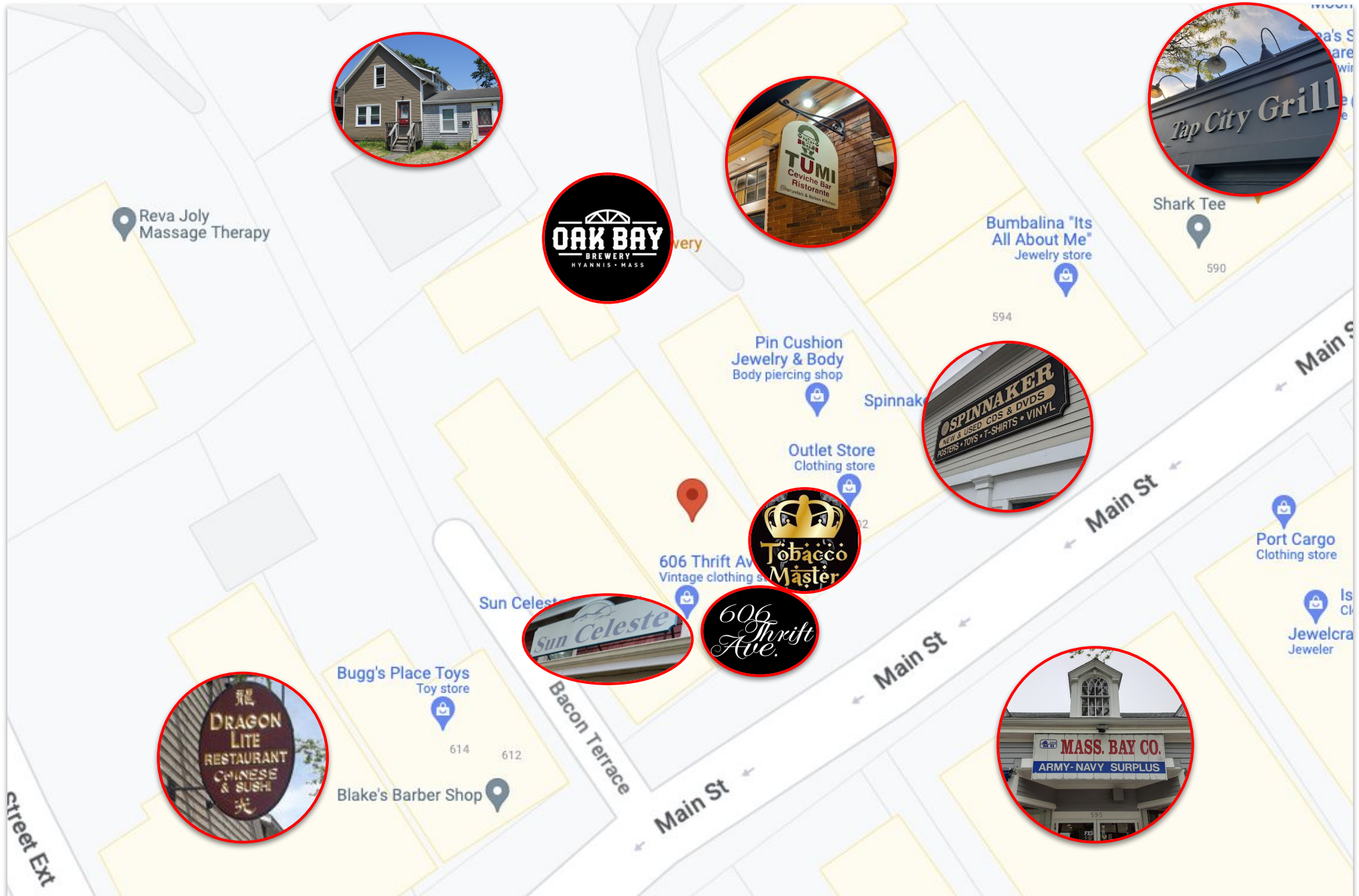
**\$1,500/MO, N-N-N Each
\$2,800/Mo, N-N-N Both**

± 480 - 1,186 SF



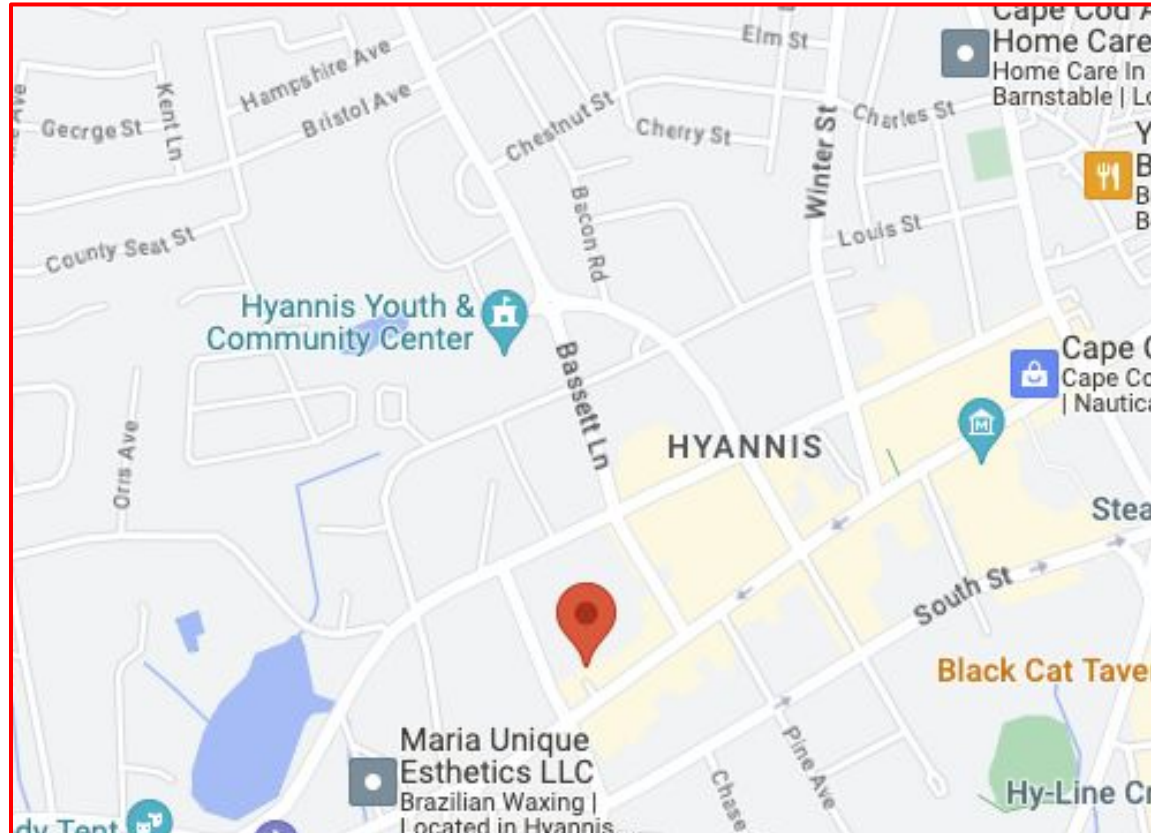
PROPERTY LOCATION

606 Main Street, Units C1 & C2, Hyannis, MA



PROPERTY LOCATION

606 Main Street, Units C1 & C2, Hyannis, MA



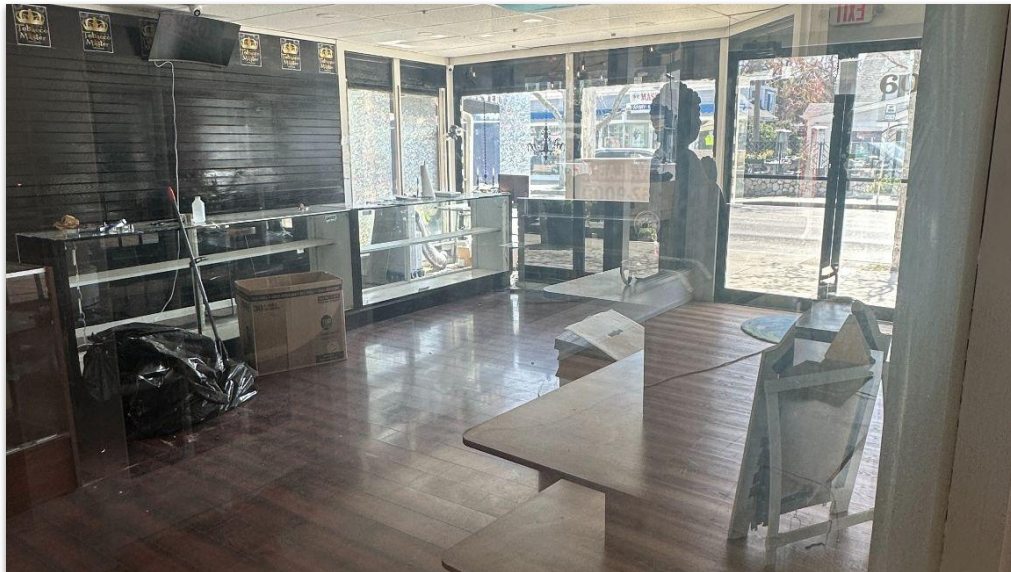
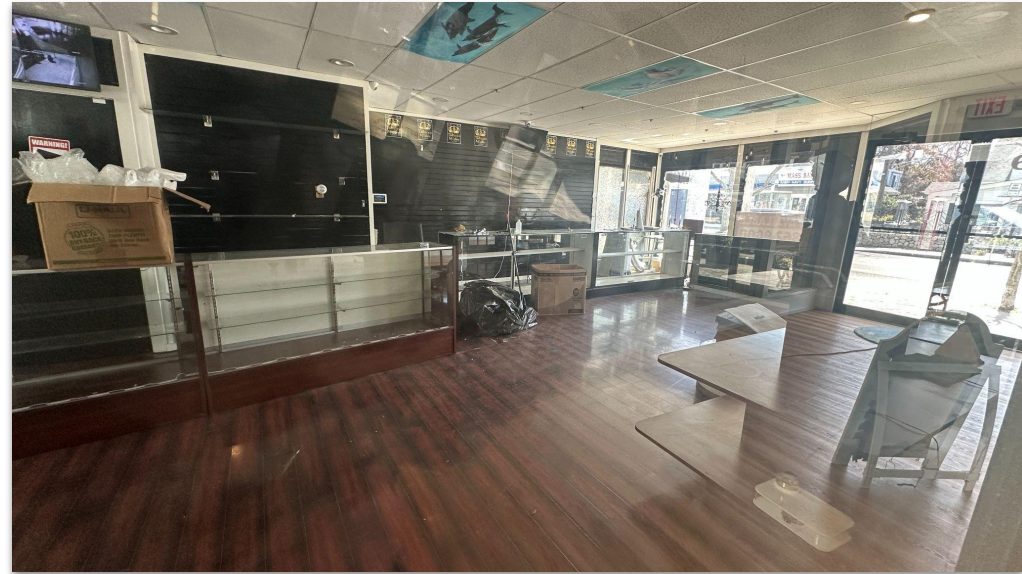
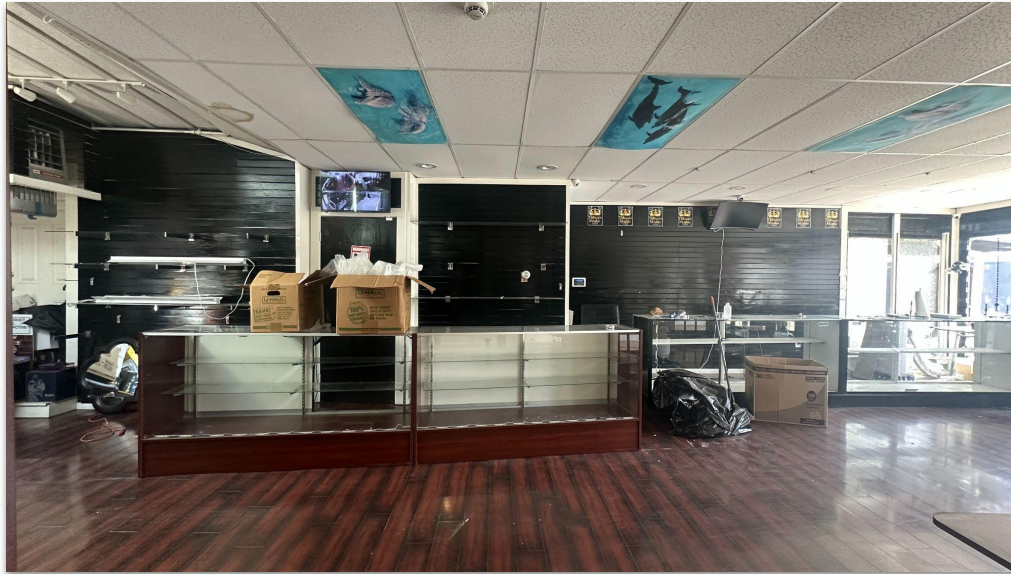
Prime Main Street location! **Units C1 (480± SF)** and **C2 (706± SF)** are available separately or together for a total of **1,186± SF**. These versatile spaces offer excellent visibility, high foot traffic, and flexible layouts ideal for retail shops, cafés, or professional offices. Customize to suit your brand and enjoy being part of Hyannis' vibrant, year-round commercial hub.

Surrounded by popular businesses, dining, and entertainment, this is a premier opportunity to grow your business in downtown Hyannis.

Lease one unit (\$1,500/mo, N-N-N) or both units (\$2,800/mo N-N-N) — unlock the full potential of Main Street!

INTERIOR PICTURES

606 Main Street, Unit C1, Hyannis, MA



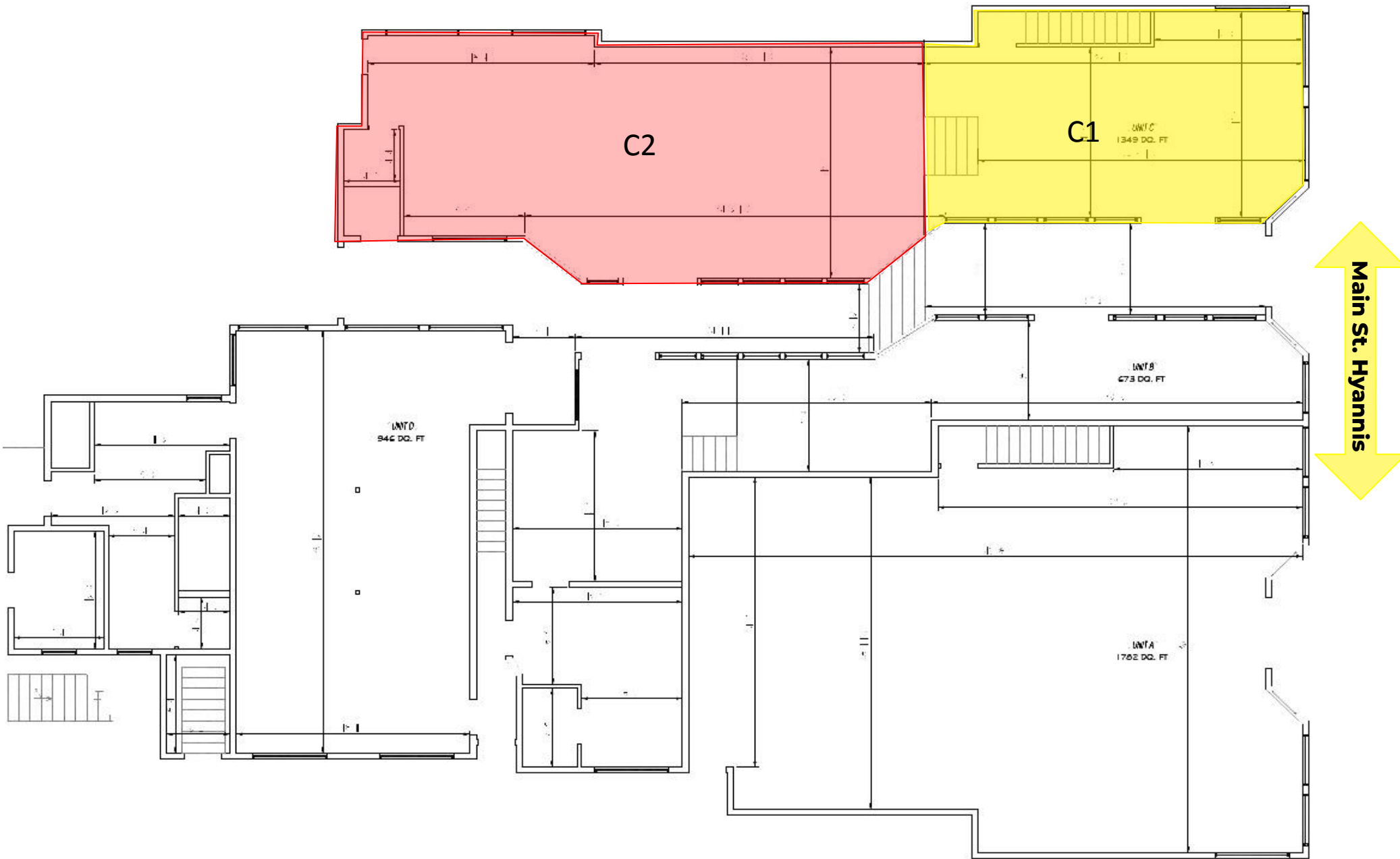
INTERIOR PICTURES

606 Main Street, Unit C2, Hyannis, MA



FLOOR PLANS

606 Main Street, Units C1 & C2, Hyannis, MA



Commercial
Realty Advisors

Commercial Realty Advisors' Disclaimer

This information has been secured from sources we believe to be reliable, but we make no representation or warranties, expressed or implied, as to the accuracy of the information contained herein. Commercial Realty Advisors, Inc. and the agent presenting this opportunity represent the Seller / Lessor, and are neither architects, engineers, inspectors, accountants nor attorneys, and therefore all buyers / tenants must consult with their own architects, engineers, inspectors, accountants or attorneys as to financial, zoning, lot line, handicapped accessibility, flood plain, mechanical, structural, or environmental concerns. Buyer must verify all information and bears all the risk for inaccuracies. Referenced square footage and acreage and sketched outlines are approximate, and this information package is subject to change.

ABOUT

Commercial Realty Advisors, Inc. specializes in commercial and industrial real estate, mergers, acquisitions, joint ventures, divestitures, and other business broker strategies. It is a commercial and real estate brokerage based in Hyannis, Massachusetts, specializing in middle-market transitions. The culture of our firm is that of an investment bank with a premium placed on intellectual vitality, relationship management, and knowledge of geographic markets. A cadre of well-educated and successful experts partner with clients to achieve objectives in a cost and time- effective manner. Our business is broadly based. Our real estate practice includes development, investment, and other commercial sale, lease, and management arrangements. Transactions include manufacturing, retailing, food processing, restaurant and hospitality, golf course, marinas, and other businesses.



SCAN THE QR
CODE TO VISIT
COMREALTY.NET!



**COMMERCIAL REALTY
ADVISORS, INC.**

222 West Main St. Hyannis, MA
508-862-9000 | comrealty.net

LICENSE #6295



OFFERING MEMORANDUM

Retail/Office Spaces Available

**FOR
LEASE**

KEVIN PEPE

Office: 508-862-9000

Cell: 508-962-5022

KPepe@ComRealty.net

222 West Main Street, Hyannis, MA 02601

<https://comrealty.net/>

606 MAIN ST. UNIT C2

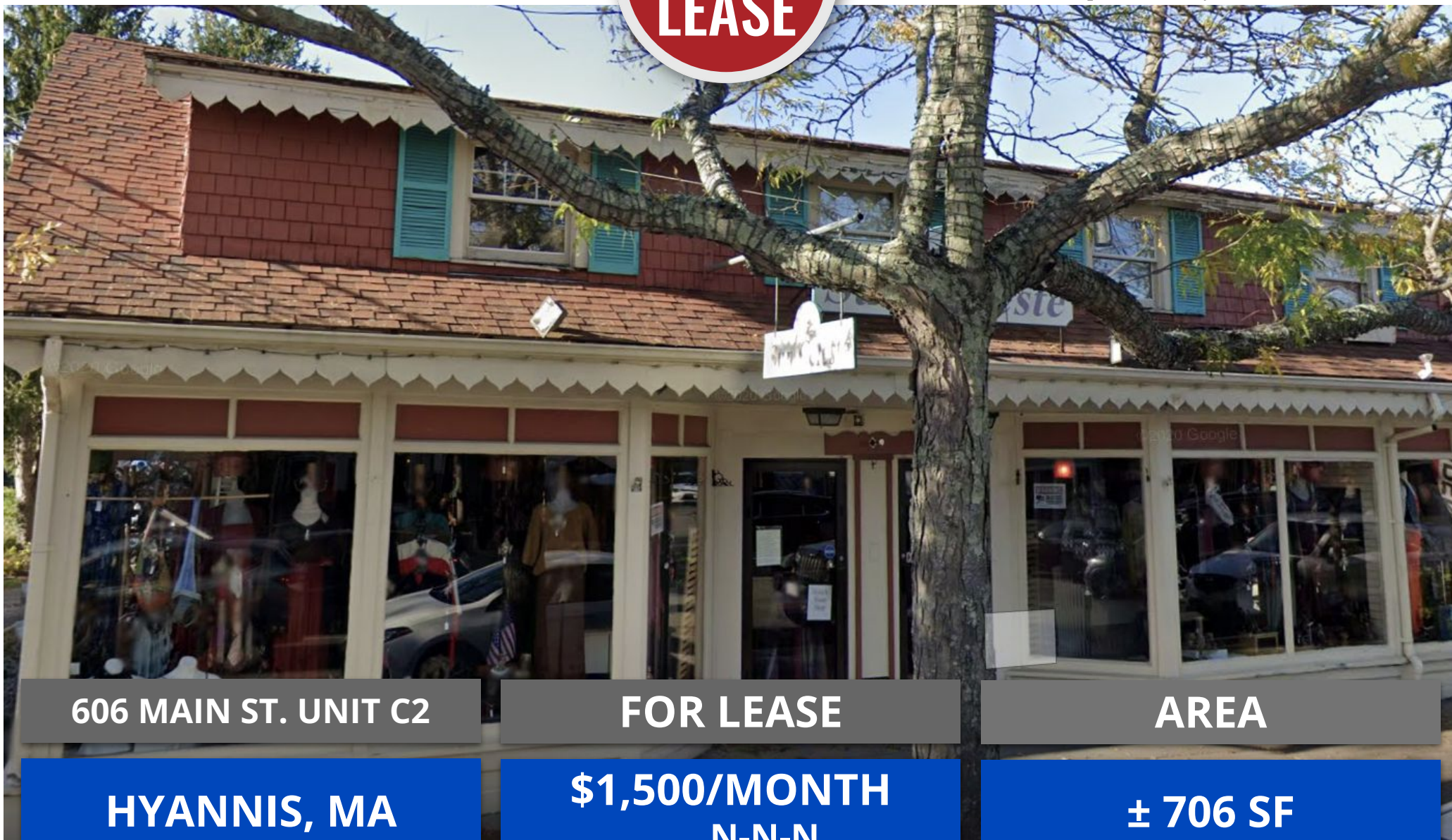
FOR LEASE

AREA

HYANNIS, MA

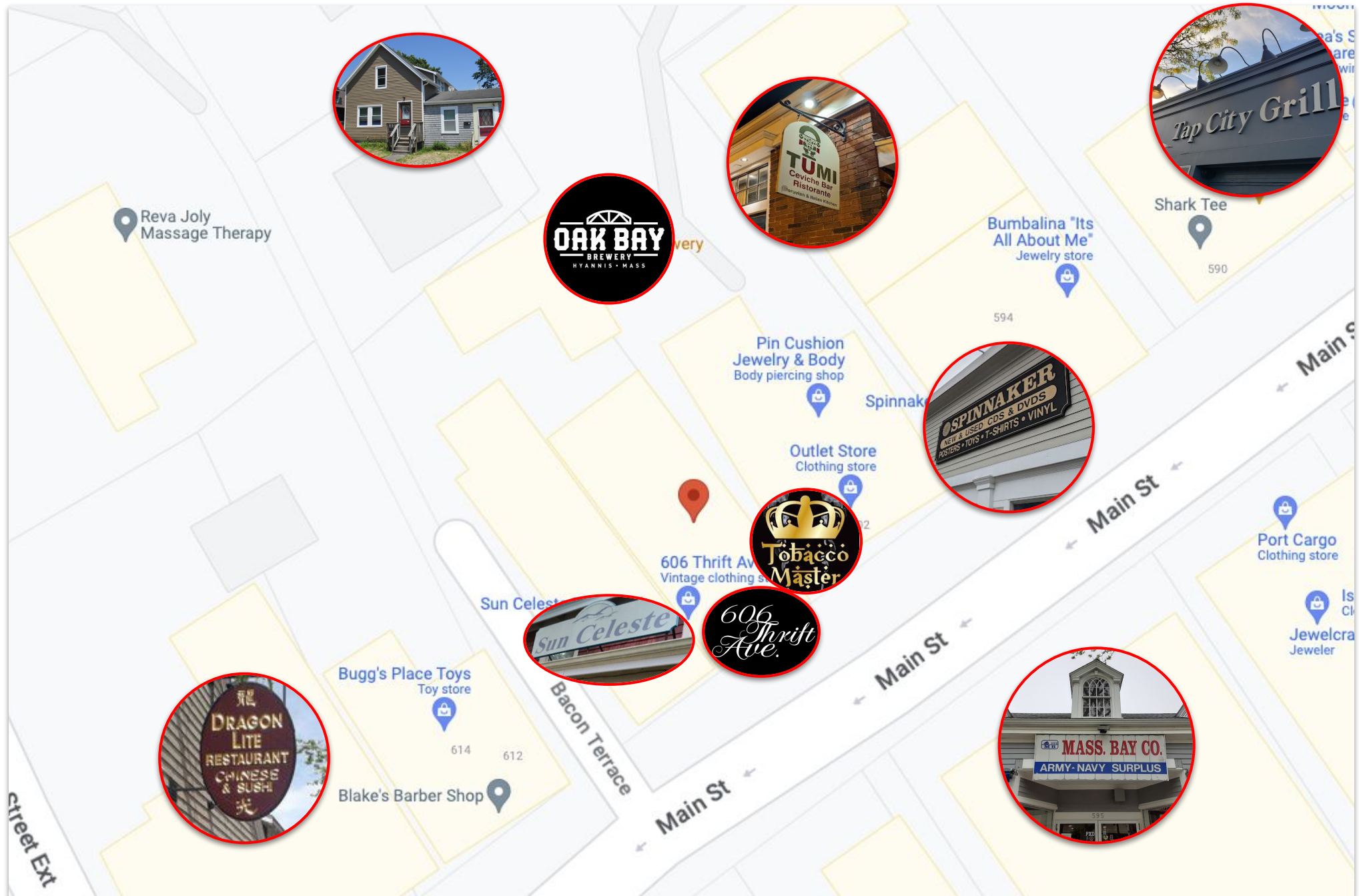
**\$1,500/MONTH
N-N-N**

± 706 SF



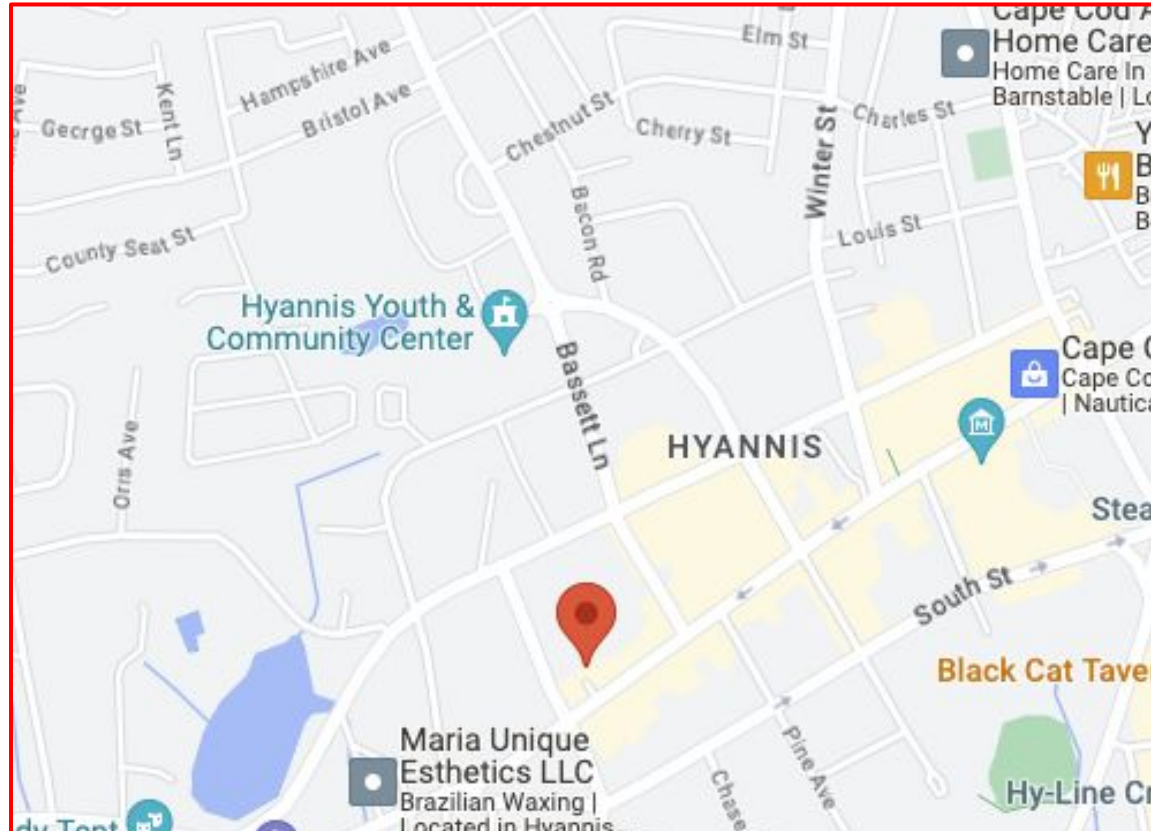
PROPERTY LOCATION

606 Main Street, Units C1 & C2, Hyannis, MA



PROPERTY LOCATION

606 Main Street, Units C1 & C2, Hyannis, MA



Prime Main Street location! **Units C1 (480± SF)** and **C2 (706± SF)** are available separately or together for a total of **1,186± SF**. These versatile spaces offer excellent visibility, high foot traffic, and flexible layouts ideal for retail shops, cafés, or professional offices. Customize to suit your brand and enjoy being part of Hyannis' vibrant, year-round commercial hub.

Surrounded by popular businesses, dining, and entertainment, this is a premier opportunity to grow your business in downtown Hyannis.

Lease one unit (\$1,500/mo, N-N-N) or both units (\$2,800/mo N-N-N) — unlock the full potential of Main Street!

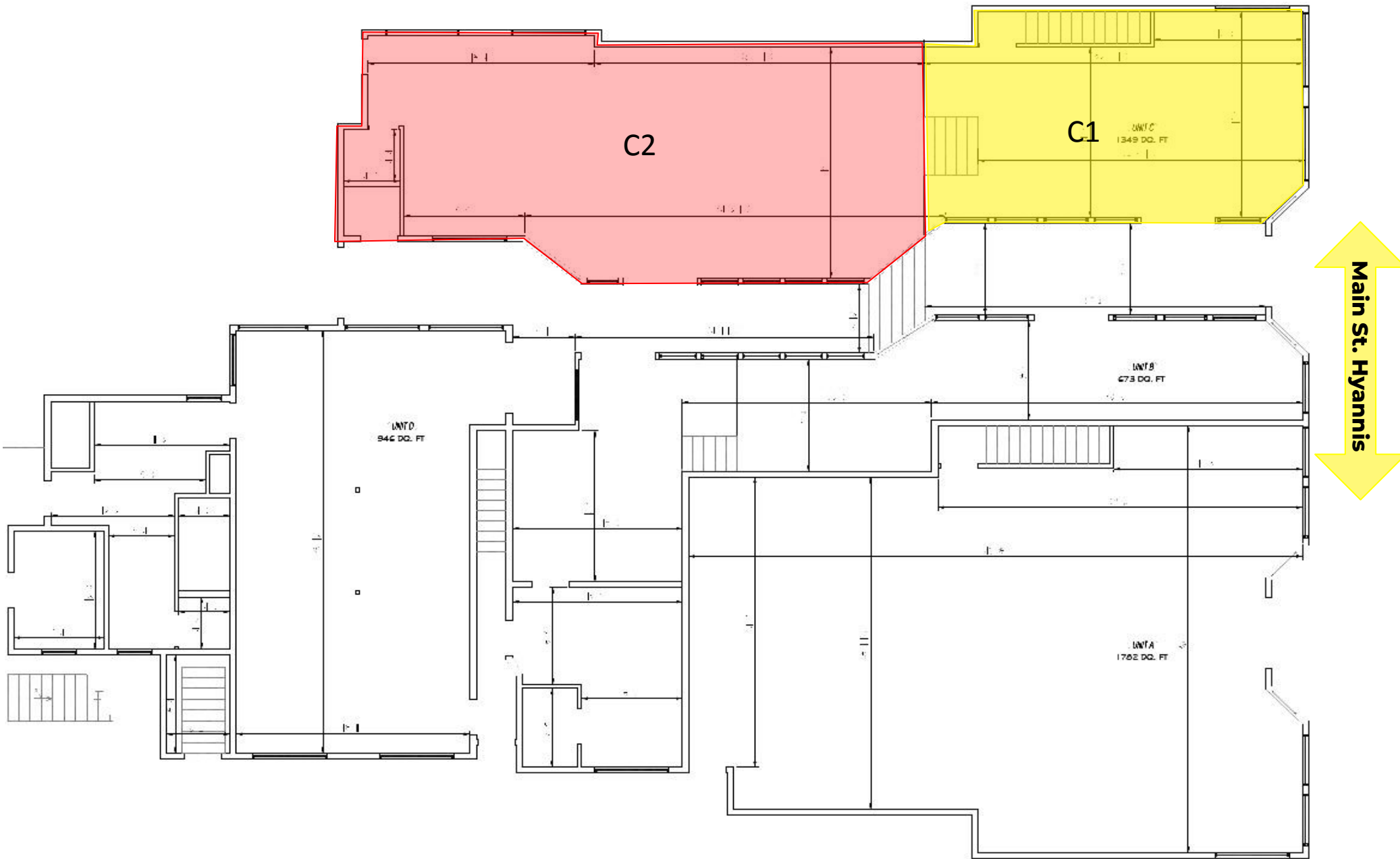
INTERIOR PICTURES

606 Main Street, Unit C2, Hyannis, MA



FLOOR PLANS

606 Main Street, Units C1 & C2, Hyannis, MA



Commercial
Realty Advisors

Commercial Realty Advisors' Disclaimer

This information has been secured from sources we believe to be reliable, but we make no representation or warranties, expressed or implied, as to the accuracy of the information contained herein. Commercial Realty Advisors, Inc. and the agent presenting this opportunity represent the Seller / Lessor, and are neither architects, engineers, inspectors, accountants nor attorneys, and therefore all buyers / tenants must consult with their own architects, engineers, inspectors, accountants or attorneys as to financial, zoning, lot line, handicapped accessibility, flood plain, mechanical, structural, or environmental concerns. Buyer must verify all information and bears all the risk for inaccuracies. Referenced square footage and acreage and sketched outlines are approximate, and this information package is subject to change.

ABOUT

Commercial Realty Advisors, Inc. specializes in commercial and industrial real estate, mergers, acquisitions, joint ventures, divestitures, and other business broker strategies. It is a commercial and real estate brokerage based in Hyannis, Massachusetts, specializing in middle-market transitions. The culture of our firm is that of an investment bank with a premium placed on intellectual vitality, relationship management, and knowledge of geographic markets. A cadre of well-educated and successful experts partner with clients to achieve objectives in a cost and time- effective manner. Our business is broadly based. Our real estate practice includes development, investment, and other commercial sale, lease, and management arrangements. Transactions include manufacturing, retailing, food processing, restaurant and hospitality, golf course, marinas, and other businesses.



SCAN THE QR
CODE TO VISIT
COMREALTY.NET!



**COMMERCIAL REALTY
ADVISORS, INC.**

222 West Main St. Hyannis, MA
508-862-9000 | comrealty.net

LICENSE #6295



OFFERING MEMORANDUM

Retail/Office Spaces Available

**FOR
LEASE**

KEVIN PEPE

Office: 508-862-9000

Cell: 508-962-5022

KPepe@ComRealty.net

222 West Main Street, Hyannis, MA 02601

<https://comrealty.net/>

606 MAIN ST. UNIT C1

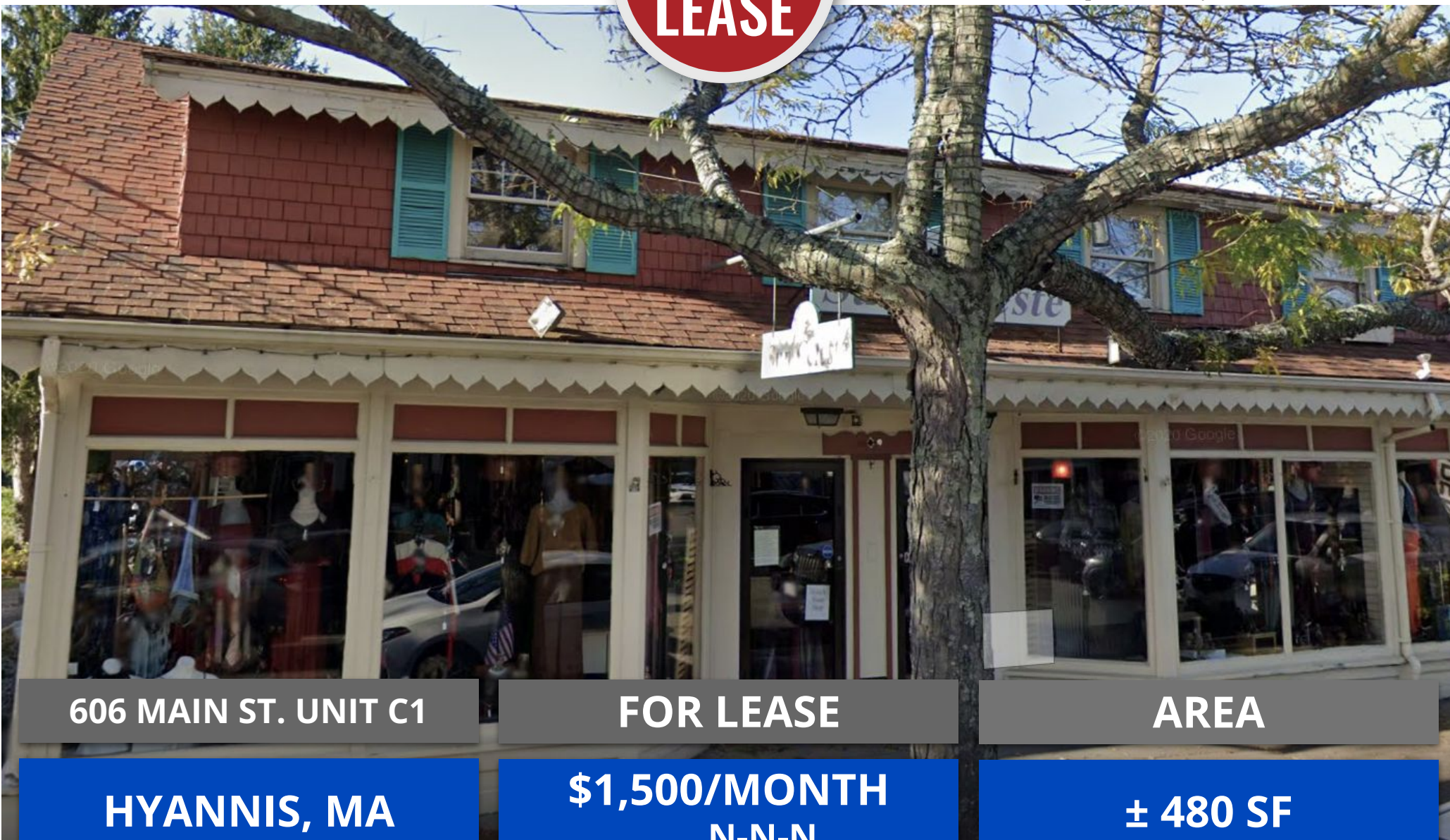
FOR LEASE

AREA

HYANNIS, MA

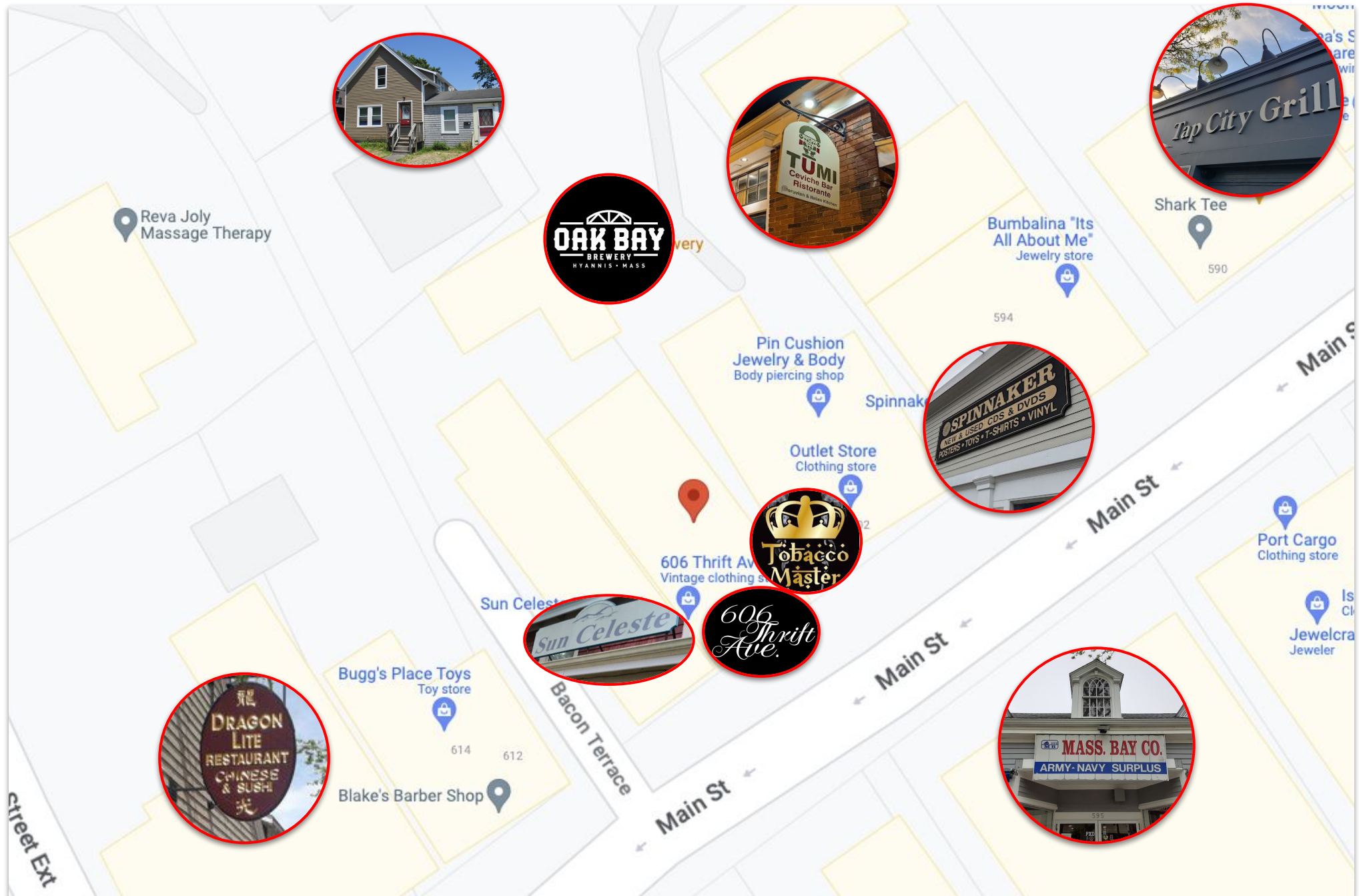
**\$1,500/MONTH
N-N-N**

± 480 SF



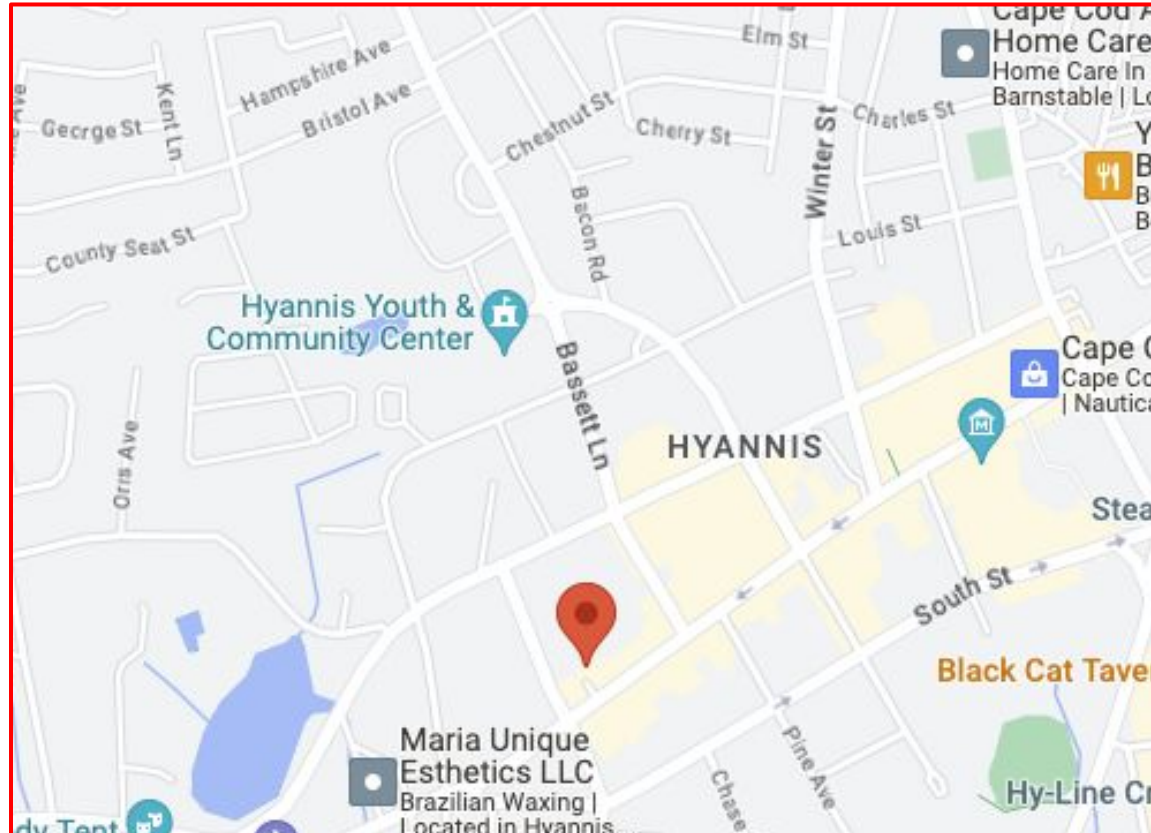
PROPERTY LOCATION

606 Main Street, Units C1 & C2, Hyannis, MA



PROPERTY LOCATION

606 Main Street, Units C1 & C2, Hyannis, MA



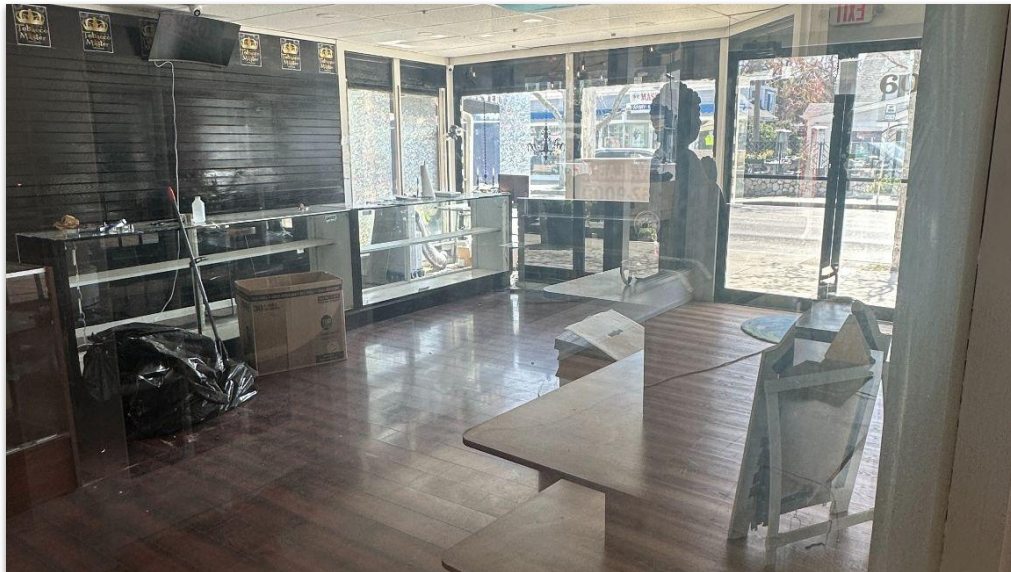
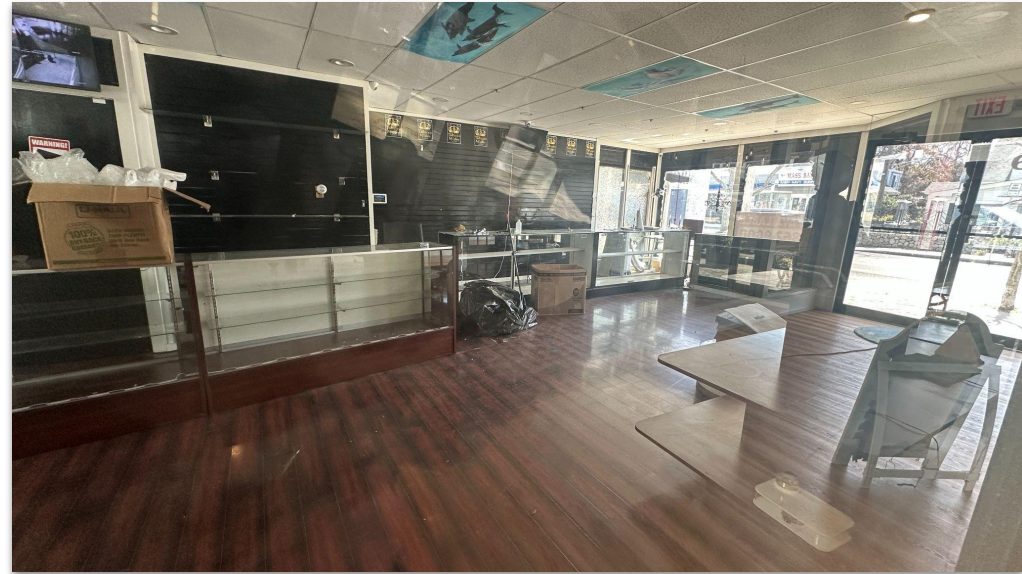
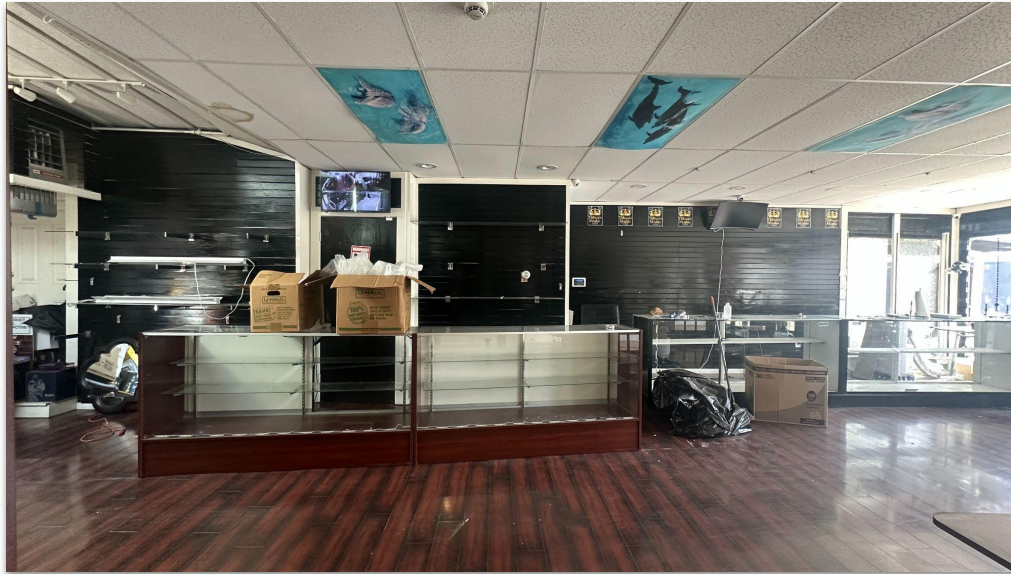
Prime Main Street location! **Units C1 (480± SF)** and **C2 (706± SF)** are available separately or together for a total of **1,186± SF**. These versatile spaces offer excellent visibility, high foot traffic, and flexible layouts ideal for retail shops, cafés, or professional offices. Customize to suit your brand and enjoy being part of Hyannis' vibrant, year-round commercial hub.

Surrounded by popular businesses, dining, and entertainment, this is a premier opportunity to grow your business in downtown Hyannis.

Lease one unit (\$1,500/mo, N-N-N) or both units (\$2,800/mo N-N-N) — unlock the full potential of Main Street!

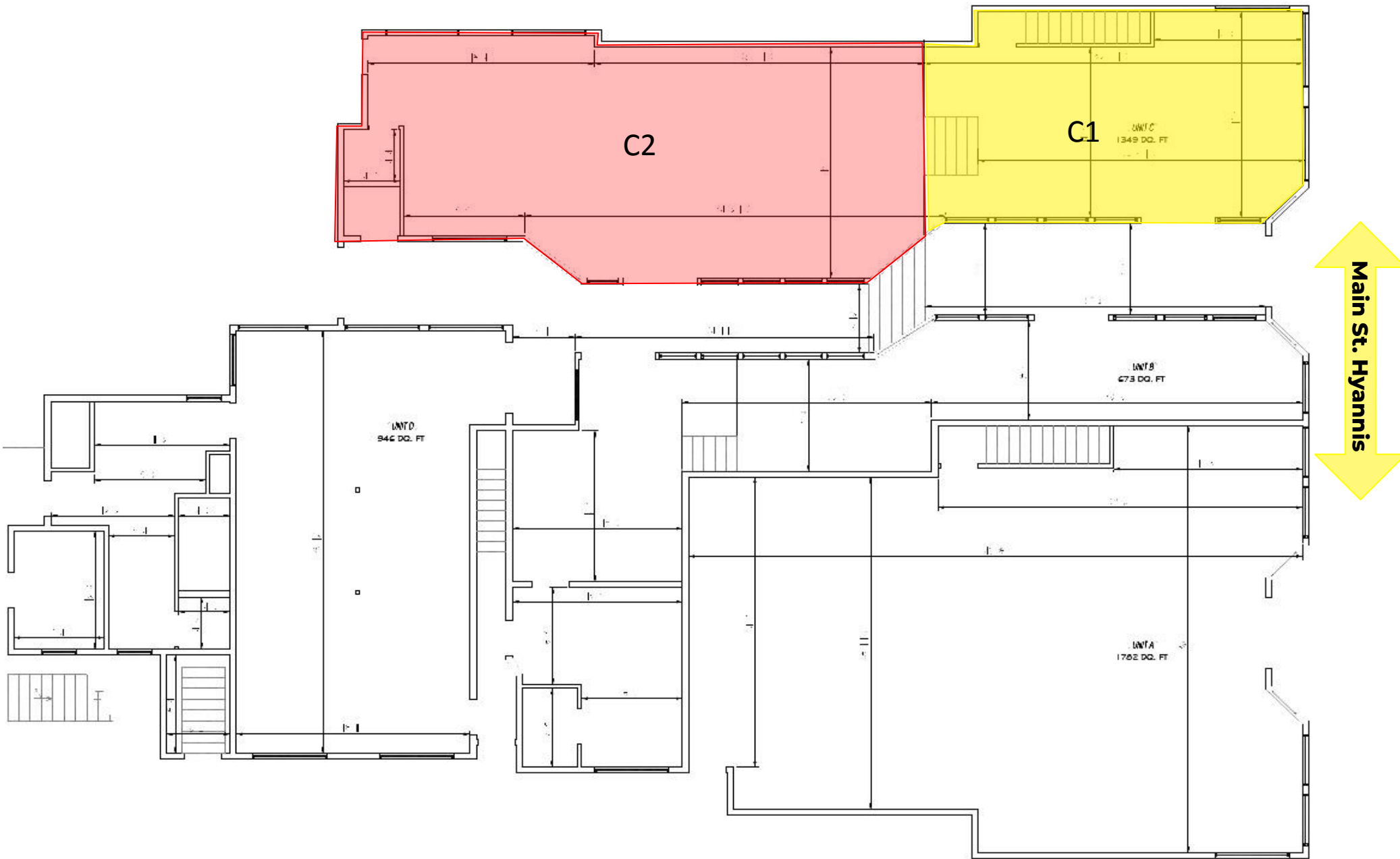
INTERIOR PICTURES

606 Main Street, Unit C1, Hyannis, MA



FLOOR PLANS

606 Main Street, Units C1 & C2, Hyannis, MA



Commercial
Realty Advisors

Commercial Realty Advisors' Disclaimer

This information has been secured from sources we believe to be reliable, but we make no representation or warranties, expressed or implied, as to the accuracy of the information contained herein. Commercial Realty Advisors, Inc. and the agent presenting this opportunity represent the Seller / Lessor, and are neither architects, engineers, inspectors, accountants nor attorneys, and therefore all buyers / tenants must consult with their own architects, engineers, inspectors, accountants or attorneys as to financial, zoning, lot line, handicapped accessibility, flood plain, mechanical, structural, or environmental concerns. Buyer must verify all information and bears all the risk for inaccuracies. Referenced square footage and acreage and sketched outlines are approximate, and this information package is subject to change.

ABOUT

Commercial Realty Advisors, Inc. specializes in commercial and industrial real estate, mergers, acquisitions, joint ventures, divestitures, and other business broker strategies. It is a commercial and real estate brokerage based in Hyannis, Massachusetts, specializing in middle-market transitions. The culture of our firm is that of an investment bank with a premium placed on intellectual vitality, relationship management, and knowledge of geographic markets. A cadre of well-educated and successful experts partner with clients to achieve objectives in a cost and time- effective manner. Our business is broadly based. Our real estate practice includes development, investment, and other commercial sale, lease, and management arrangements. Transactions include manufacturing, retailing, food processing, restaurant and hospitality, golf course, marinas, and other businesses.



SCAN THE QR
CODE TO VISIT
COMREALTY.NET!



**COMMERCIAL REALTY
ADVISORS, INC.**

222 West Main St. Hyannis, MA
508-862-9000 | comrealty.net

LICENSE #6295

