

Commercial
Realty Advisors
JORDAN PLAZA
Retail/Office/Medical

**FOR
LEASE**

KEVIN PEPE

Cell: 508-962-5022

KPepe@ComRealty.net

SEAN RANDALL

Cell: 508-272-2544

SRandall@ComRealty.net



3119 Cranberry Hwy

FOR LEASE

AREA

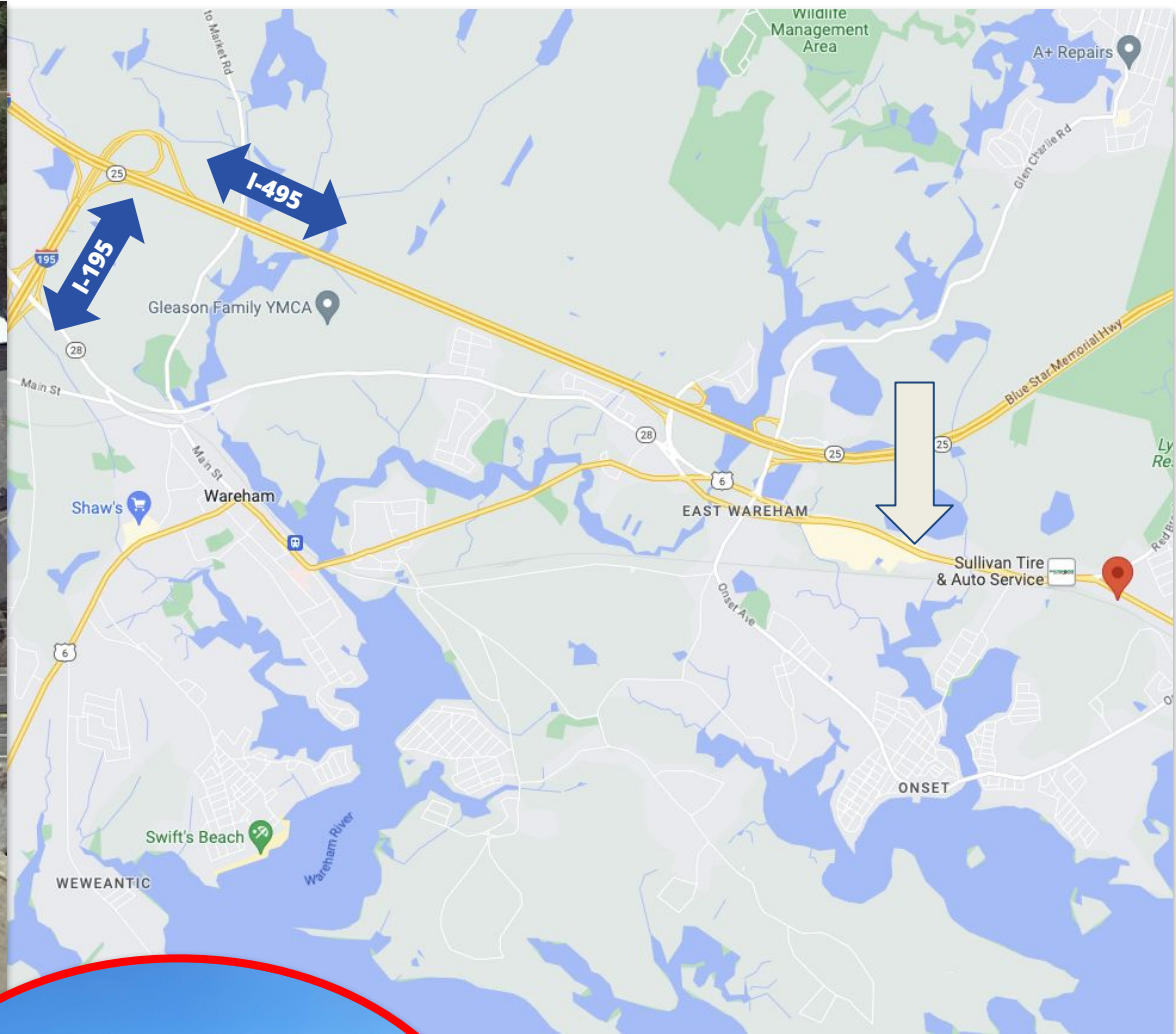
East Wareham

**\$18.50/Sq Ft
NNN**

**From 300 Sq Ft
to 5,000+ Sq Ft**

PROPERTY LOCATION

3119 Cranberry Highway, East Wareham, MA 02538



PROPERTY SPECIFICATIONS

3119 Cranberry Highway, East Wareham, MA 02538

Year Built 2004

Size 24,569

Stories 2

Bathrooms 4

Address 3119 Cranberry Highway, Wareham

Style Plaza w/anchr

Book/Page 50341/0276

Use Code 3400

Parcel ID 2796

Zoning SC



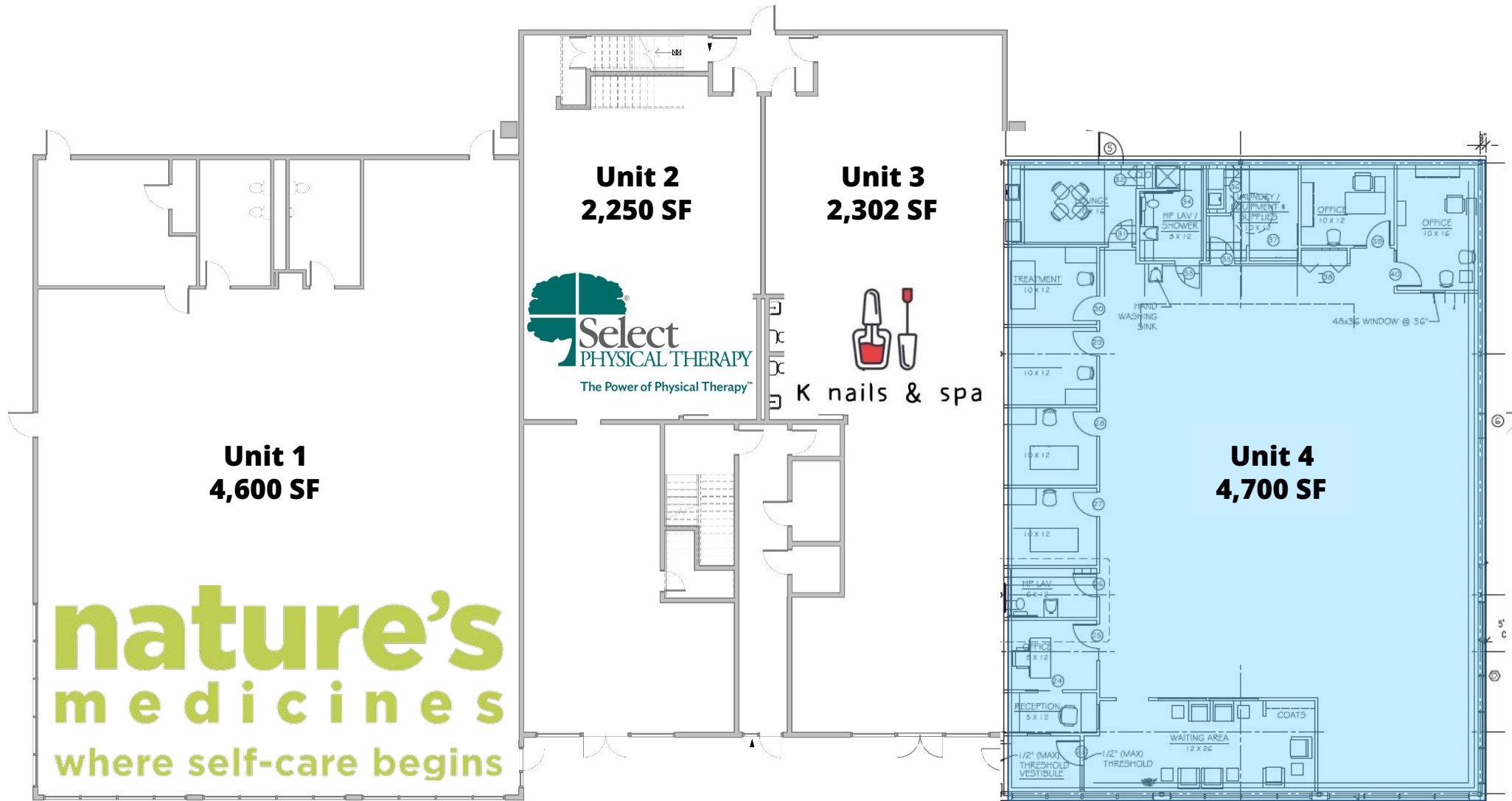
Features:

- Two Story Commercial Building
- On-site Parking for 70+ cars
- All day foot traffic from businesses Nature's Medicines and Select Physical Therapy who occupy Units 1 and 2.
- Convenient elevator
- Serviced by municipal sewer and water
- Gas fired hot air HVAC system
- On-site management
- Centrally located for easy access to service Plymouth, Barnstable, and Bristol Counties.
- Convenient Access to I-495 and I-195, and Rt 3



FLOOR PLANS

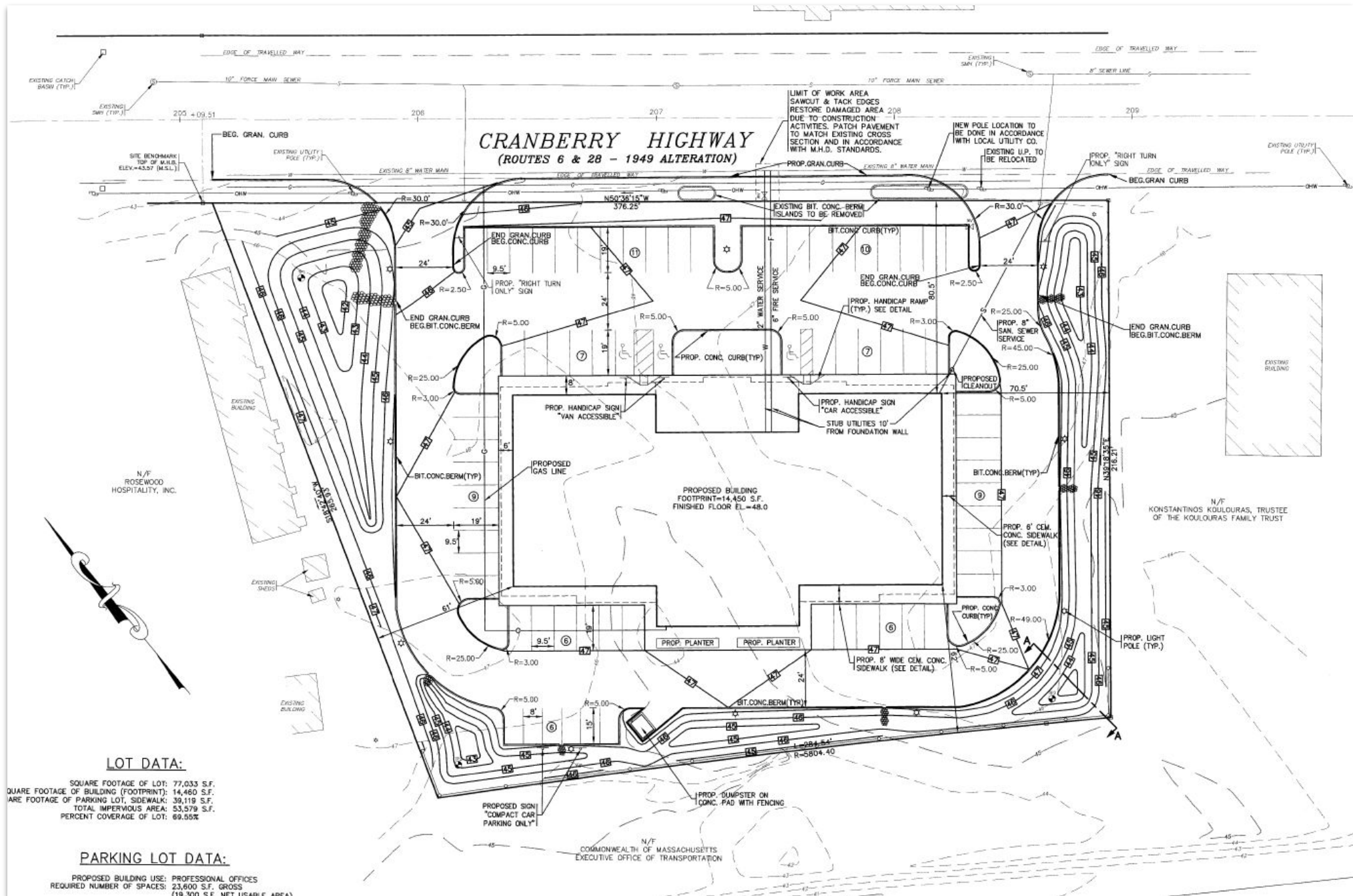
First Floor of 3119 Cranberry Highway, East Wareham, MA 02538



FLOOR PLANS

Second Floor of 3119 Cranberry Highway, East Wareham, MA 02538





INTERIOR PICTURES

3119 Cranberry Highway, East Wareham, MA 02538



Unit 5F



Unit 5F

INTERIOR PICTURES

3119 Cranberry Highway, East Wareham, MA 02538



EXTERIOR PICTURES

3119 Cranberry Highway, East Wareham, MA 02538



Commercial
Realty Advisors

Commercial Realty Advisors' Disclaimer

This information has been secured from sources we believe to be reliable, but we make no representation or warranties, expressed or implied, as to the accuracy of the information contained herein.

Commercial Realty Advisors, Inc. and the agent presenting this opportunity represent the Seller / Lessor, and are neither architects, engineers, inspectors, accountants nor attorneys, and therefore all buyers / tenants must consult with their own architects, engineers, inspectors, accountants or attorneys as to financial, zoning, lot line, handicapped accessibility, flood plain, mechanical, structural, or environmental concerns. Buyer must verify all information and bears all the risk for inaccuracies. Referenced square footage and acreage and sketched outlines are approximate, and this information package is subject to change.

ABOUT

Commercial Realty Advisors, Inc. specializes in commercial and industrial real estate, mergers, acquisitions, joint ventures, divestitures, and other business broker strategies. It is a commercial and real estate brokerage based in Hyannis, Massachusetts, specializing in middle-market transitions. The culture of our firm is that of an investment bank with a premium placed on intellectual vitality, relationship management, and knowledge of geographic markets. A cadre of well-educated and successful experts partner with clients to achieve objectives in a cost and time- effective manner. Our business is broadly based. Our real estate practice includes development, investment, and other commercial sale, lease, and management arrangements. Transactions include manufacturing, retailing, food processing, restaurant and hospitality, golf course, marinas, and other businesses.



SCAN THE QR
CODE TO VISIT
COMREALTY.NET!



**COMMERCIAL REALTY
ADVISORS, INC.**
222 West Main St. Hyannis, MA
508-862-9000 | comrealty.net

LICENSE #6295
 **MLS**
REALTOR MULTIPLE LISTING SERVICE