

**FOR
LEASE**

Jeff Eklund

Office: 508-862-9000, ext. 115

jeklund@comrealty.net



141 ROUTE 6A

FOR LEASE

AREA

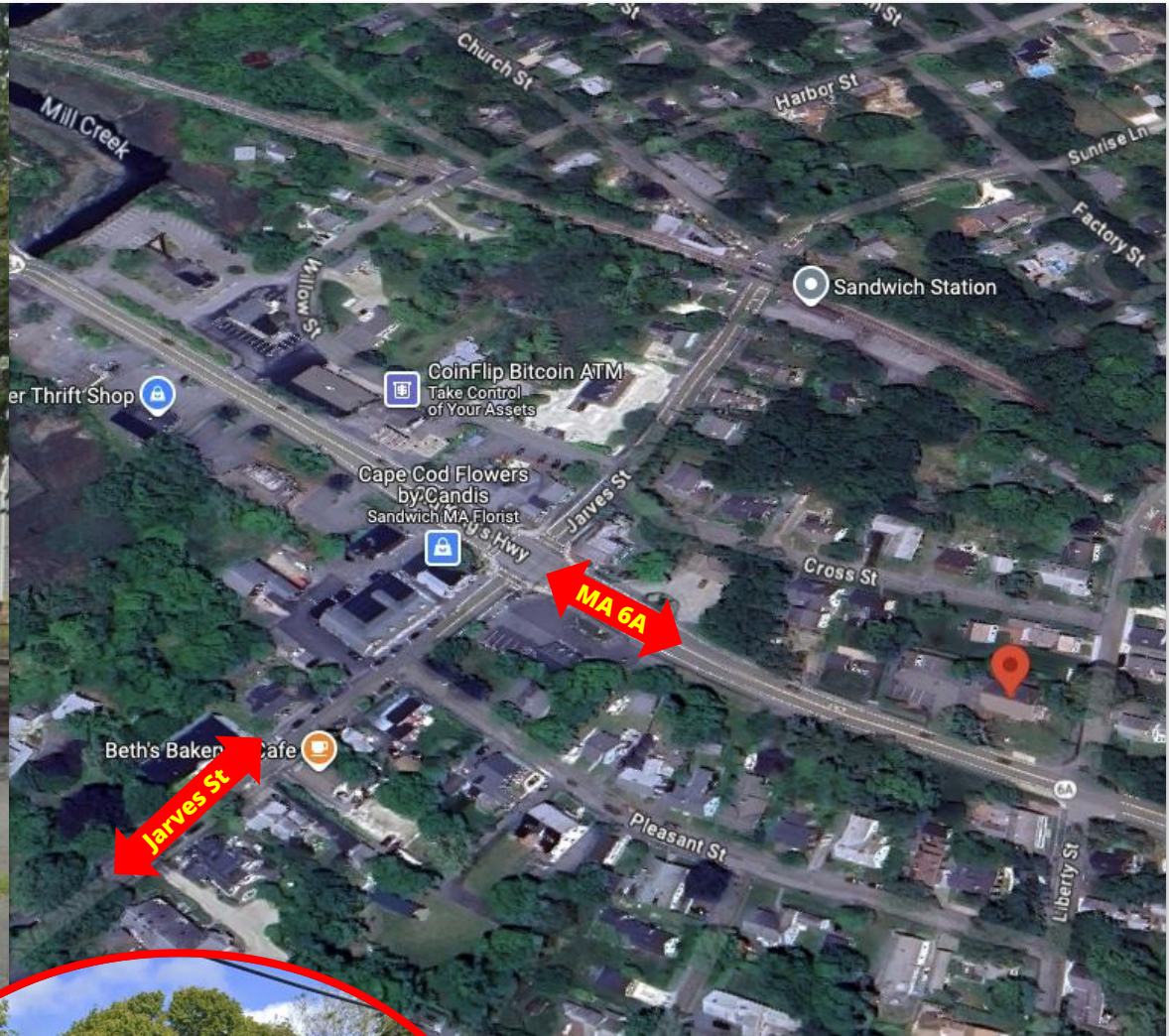
SANDWICH, MA

**\$725-1,000/Month
GROSS**

**From 317+/- Sq Ft
to 408+/- Sq Ft**

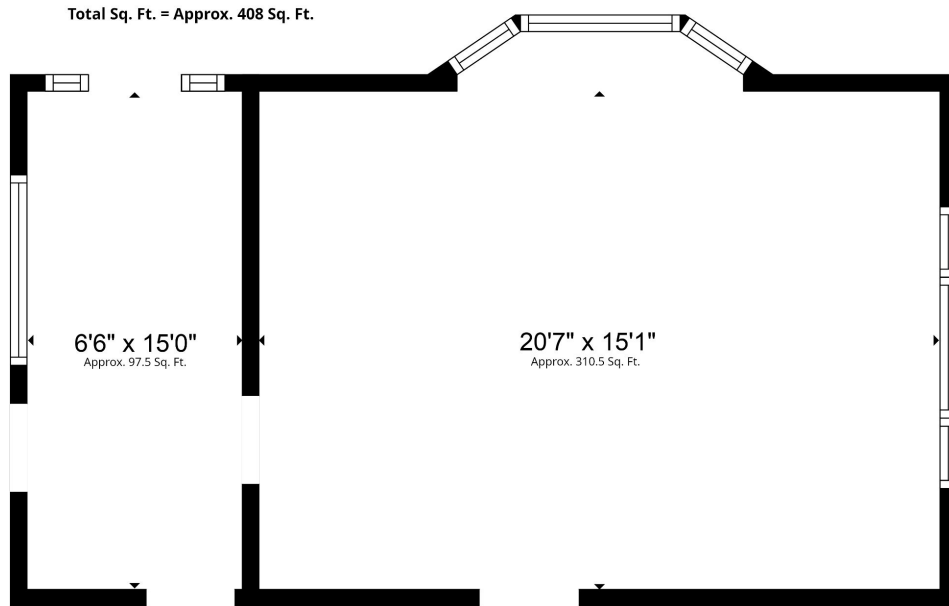
PROPERTY LOCATION

141 Route 6A, Sandwich, MA 02563

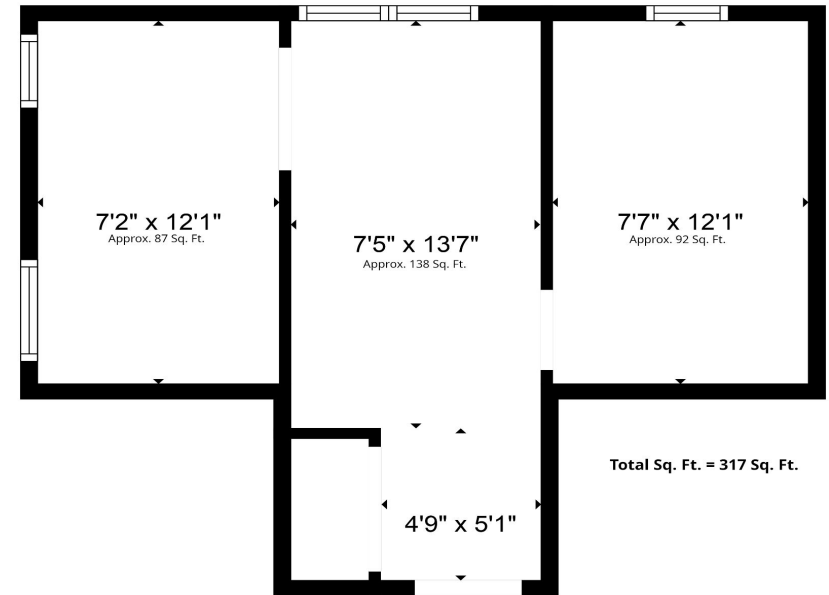


FLOOR PLANS

First Floor, 141 Route 6A, Sandwich, MA 02563



Unit 2
\$1,000/Month Gross



Unit 4
\$800/Month Gross

Looking for a professional office space in a prime Sandwich location? 141 Route 6A offers **affordable and flexible** first- and second-floor office spaces ideal for attorneys, accountants, insurance agencies, and other small businesses.

Don't miss out on this opportunity to establish or grow your business in a **central, high-visibility location**. **Schedule a showing today!**

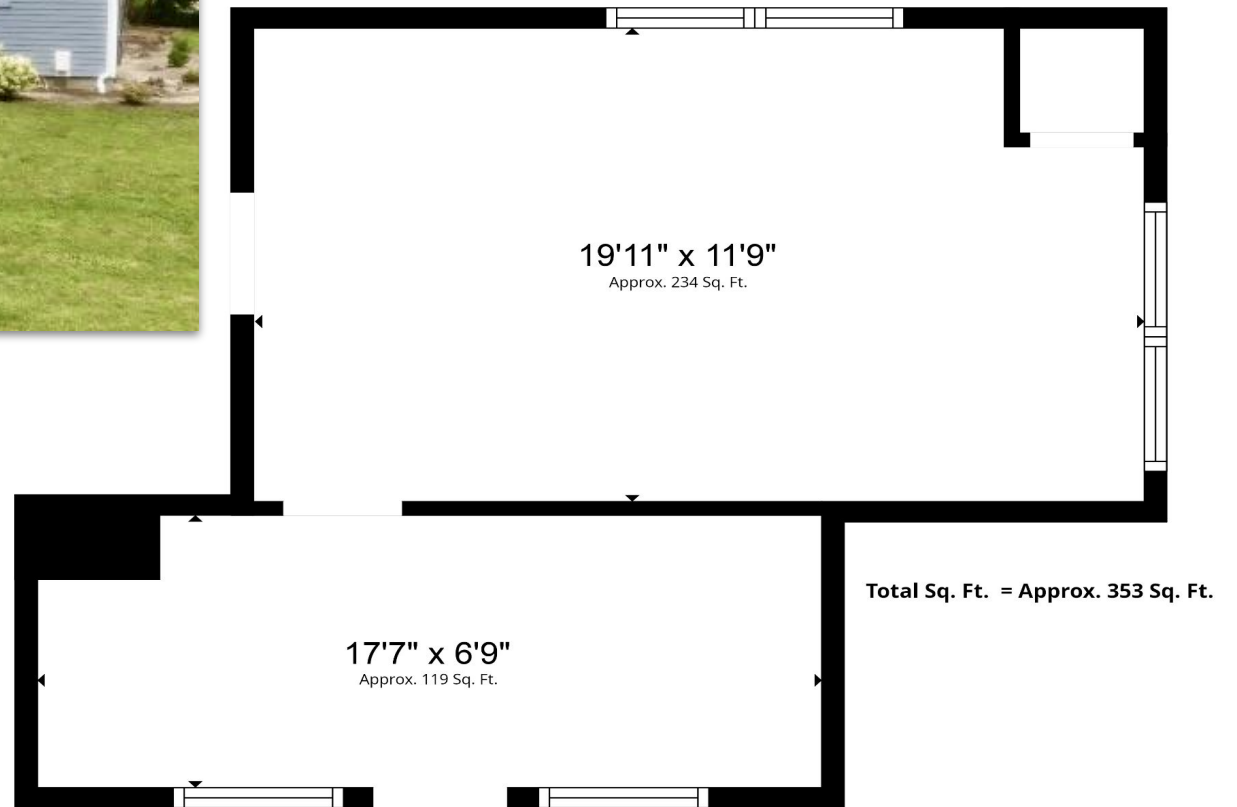
INTERIOR PICTURES

First Floor, 141 Route 6A, Sandwich, MA 02563



FLOOR PLANS

Second Floor, 141 Route 6A, Sandwich, MA 02563



INTERIOR PICTURES

141 Route 6A, Sandwich, MA 02563



Unit 7



Key Features:

- **Varied Office Sizes:** Spaces range from **317± to 408± sq. ft.**, providing options to fit your business needs.
- **Turnkey Convenience:** Well-maintained offices with professional layouts, ready for immediate occupancy.
- **Affordable Rates:** Lease for just **\$725 - \$1,000/month gross**, making it a cost-effective solution.
- **Prime Location:** Situated on **Old King's Highway (Route 6A)** in the heart of Sandwich, with easy access to Route 6 and surrounding business hubs.
- **Professional Setting:** Ideal for client meetings with a polished, professional atmosphere.

Commercial
Realty Advisors

Commercial Realty Advisors' Disclaimer

This information has been secured from sources we believe to be reliable, but we make no representation or warranties, expressed or implied, as to the accuracy of the information contained herein.

Commercial Realty Advisors, Inc. and the agent presenting this opportunity represent the Seller / Lessor, and are neither architects, engineers, inspectors, accountants nor attorneys, and therefore all buyers / tenants must consult with their own architects, engineers, inspectors, accountants or attorneys as to financial, zoning, lot line, handicapped accessibility, flood plain, mechanical, structural, or environmental concerns. Buyer must verify all information and bears all the risk for inaccuracies. Referenced square footage and acreage and sketched outlines are approximate, and this information package is subject to change.

ABOUT

Commercial Realty Advisors, Inc. specializes in commercial and industrial real estate, mergers, acquisitions, joint ventures, divestitures, and other business broker strategies. It is a commercial and real estate brokerage based in Hyannis, Massachusetts, specializing in middle-market transitions. The culture of our firm is that of an investment bank with a premium placed on intellectual vitality, relationship management, and knowledge of geographic markets. A cadre of well-educated and successful experts partner with clients to achieve objectives in a cost and time- effective manner. Our business is broadly based. Our real estate practice includes development, investment, and other commercial sale, lease, and management arrangements. Transactions include manufacturing, retailing, food processing, restaurant and hospitality, golf course, marinas, and other businesses.



SCAN THE QR
CODE TO VISIT
COMREALTY.NET!



**COMMERCIAL REALTY
ADVISORS, INC.**
222 West Main St. Hyannis, MA
508-862-9000 | comrealty.net

LICENSE #6295
 **MLS**
REALTOR MULTIPLE LISTING SERVICE