

Commercial
Realty Advisors

*Highly Visible Salon - Retail Space
For Lease - Town Line Plaza Harwich*



BRAD KUHRTZ

Cell: 508-360-4523

BKuhrtz@ComRealty.net

Commercial Realty Advisors, Inc.

222 West Main Street, Hyannis, MA

Office: 508-862-9000

ComRealty.net [f](#) [i](#) [in](#)



16 Route 28

FOR LEASE

AREA

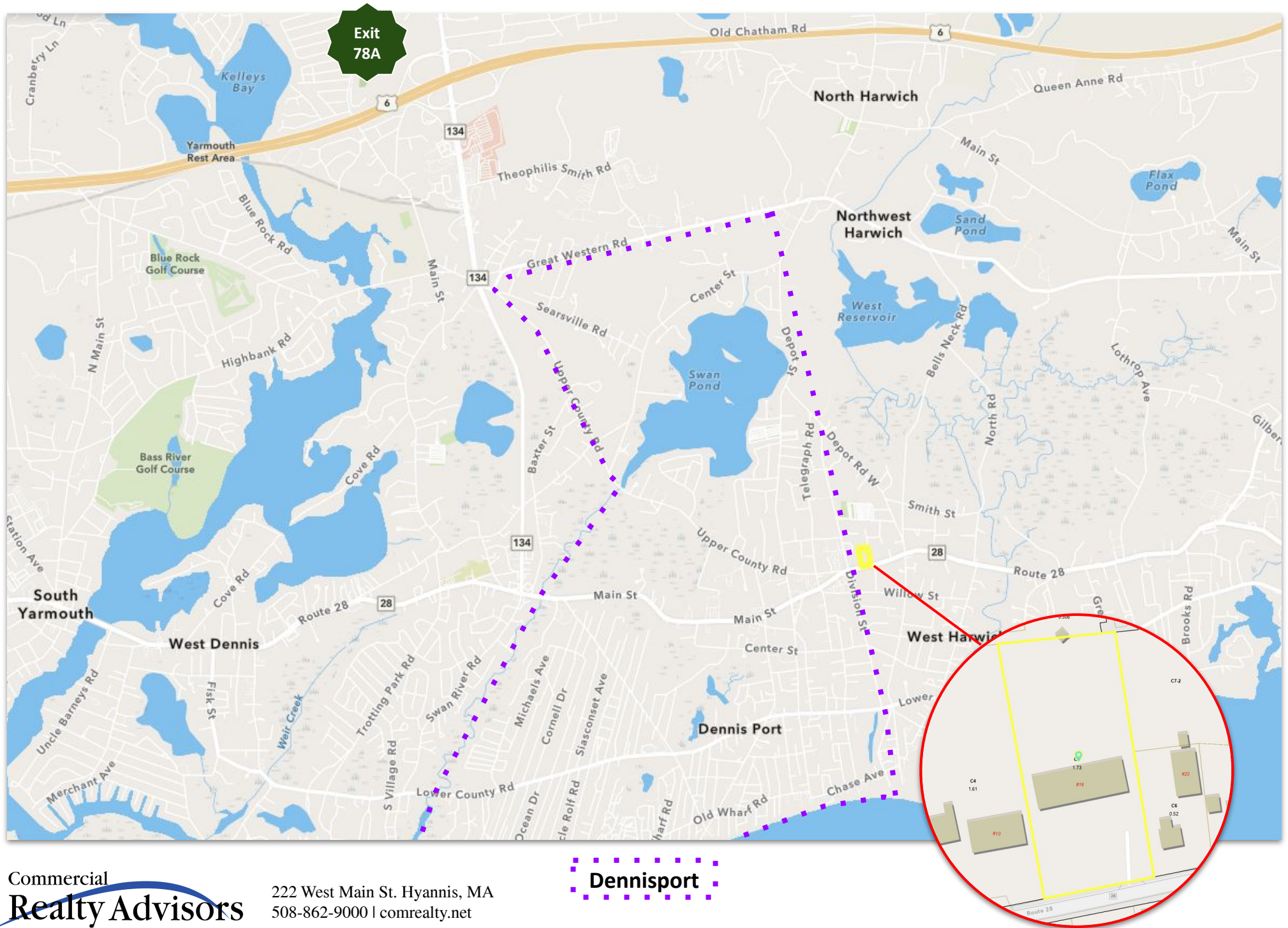
HARWICH

**\$1,600/Month
+Utilities**

± 950 SF

PROPERTY LOCATION

16 MA-28, West Harwich, MA 02671

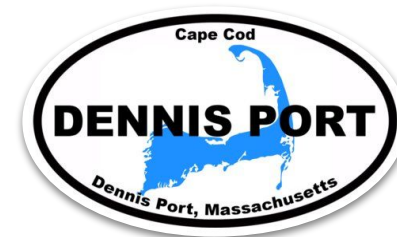
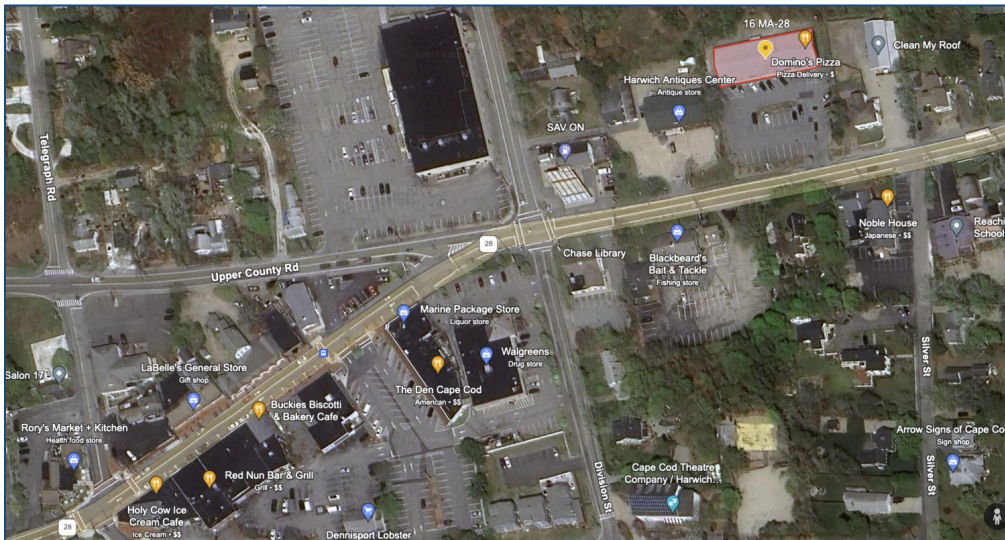


PROPERTY SPECIFICATIONS

16 MA-28, West Harwich, MA 02671

Year Built	1986
Building Size	±6,900 SF
Unit Size	±950 SF
Stories	1
Address	16 MA-28, West Harwich, MA 02671
Style	Small Retail
Parcel ID	10/C5
Zoning	CH1 (Commercial Highway 1)

- **Location Highlights:** Situated on the edge of the bustling Village of Dennisport, this prime retail space offers the unique advantage of being in the heart of downtown Dennisport while technically located in Harwich. This dual appeal ensures high visibility and access from both thriving communities.
- **Size:** Approximately 950 sq. ft.
- **Setup:** Perfectly outfitted for a hair salon, complete with multiple stations and chairs, and an inground tight tank. Tenant is responsible for the pumping of the tight tank.
- **Climate Control:** The unit is centrally climate controlled, providing both air conditioning and heating.
- **Facilities:** Includes a private half bath at the rear of the space.
- **Safety:** The building is equipped with a sprinkler system.
- **Visibility:** Tenant signage is available on both the building and street front signs, enhancing exposure.
- **Parking:** Ample parking space is available, making it convenient for clients and staff.
- **Monthly Rent:** \$1,600 plus utilities.



This highly visible and accessible location in the vibrant Village of Dennisport, paired with its readiness for salon use, makes it an ideal spot for your business.



Commercial
Realty Advisors

Commercial Realty Advisors' Disclaimer

This information has been secured from sources we believe to be reliable, but we make no representation or warranties, expressed or implied, as to the accuracy of the information contained herein. Commercial Realty Advisors, Inc. and the agent presenting this opportunity represent the Seller / Lessor, and are neither architects, engineers, inspectors, accountants nor attorneys, and therefore all buyers / tenants must consult with their own architects, engineers, inspectors, accountants or attorneys as to financial, zoning, lot line, handicapped accessibility, flood plain, mechanical, structural, or environmental concerns. Buyer must verify all information and bears all the risk for inaccuracies. Referenced square footage and acreage and sketched outlines are approximate, and this information package is subject to change.

ABOUT

Commercial Realty Advisors, Inc. specializes in commercial and industrial real estate, mergers, acquisitions, joint ventures, divestitures, and other business broker strategies. It is a commercial and real estate brokerage based in Hyannis, Massachusetts, specializing in middle-market transitions. The culture of our firm is that of an investment bank with a premium placed on intellectual vitality, relationship management, and knowledge of geographic markets. A cadre of well-educated and successful experts partner with clients to achieve objectives in a cost and time- effective manner. Our business is broadly based. Our real estate practice includes development, investment, and other commercial sale, lease, and management arrangements. Transactions include manufacturing, retailing, food processing, restaurant and hospitality, golf course, marinas, and other businesses.



SCAN THE QR
CODE TO VISIT
COMREALTY.NET!



**COMMERCIAL REALTY
ADVISORS, INC.**

222 West Main St. Hyannis, MA
508-862-9000 | comrealty.net

LICENSE #6295

