

OFFERING MEMORANDUM

Professional Office, Medical Space

**FOR
LEASE**

KEVIN PEPE

Office: 508-862-9000

Cell: 508-962-5022

KPepe@ComRealty.net

222 West Main Street, Hyannis, MA 02601

<https://comrealty.net/>



6 East Main Street

FOR LEASE

AREA

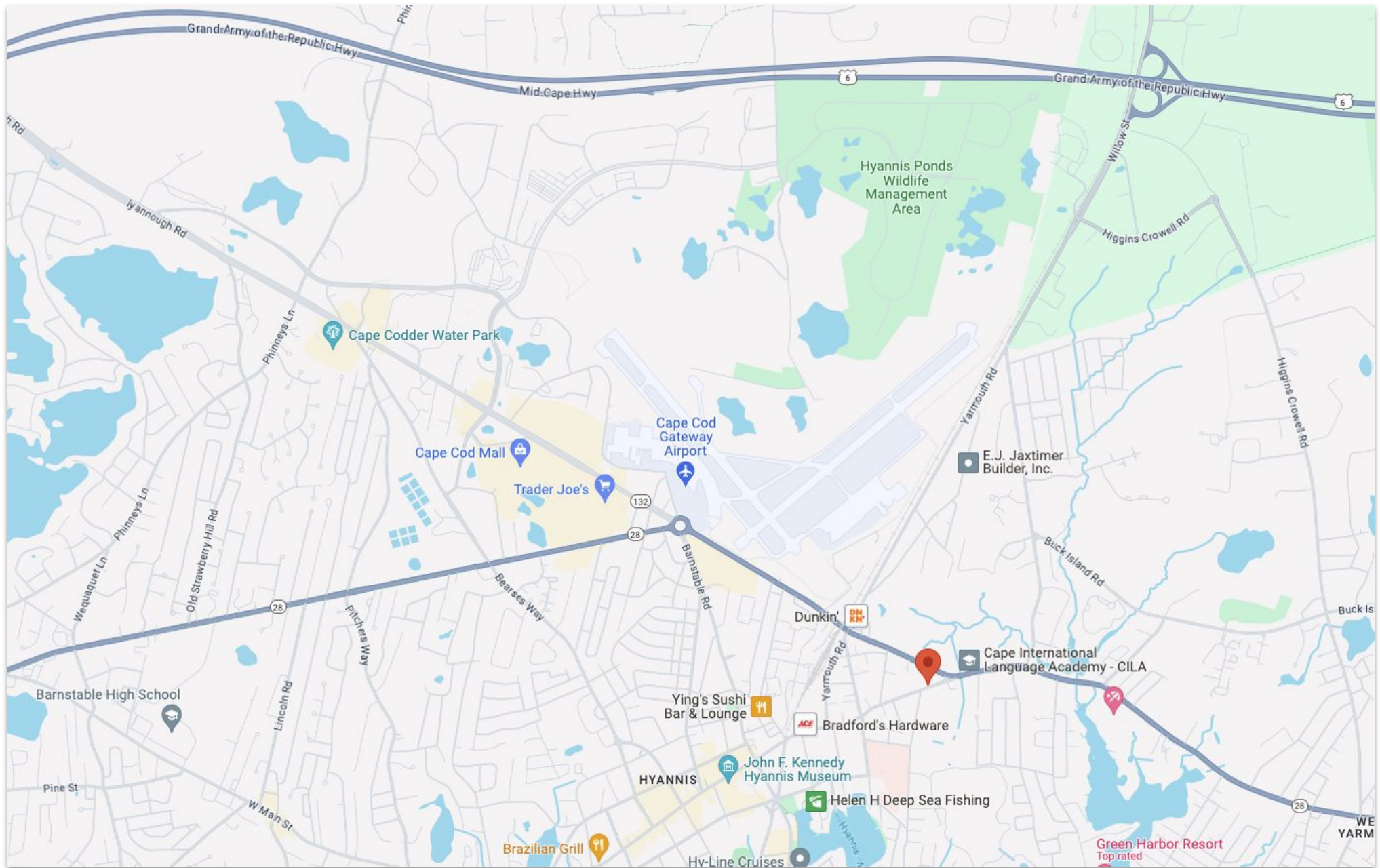
W. YARMOUTH

\$3,000/Month NNN

**±1,320 Sq. Ft.
Plus Basement**

PROPERTY LOCATION

6 East Main St, West Yarmouth, MA 02673



PROPERTY LOCATION

6 East Main St, West Yarmouth, MA 02673



PROPERTY DETAILS

6 East Main St, West Yarmouth, MA 02673

This freestanding professional office unit is currently configured with a reception area, business area, lab, 3 exam rooms, and a physicians office. Includes full basement. Zoned B2 by the town of Yarmouth. Outstanding visibility, yards from Cape Cod Hospital and intersection of Main Street and Route 28. Call today to schedule a showing!

Year Built 1917

Total Building Size 1,320 SF

Available Space 1,320 SF

Stories 1

Style Office Building

Parcel ID 36-95/ //

Book/Page 30957/0180

Zoning B2



PROPERTY PHOTOS

6 East Main St, West Yarmouth, MA 02673



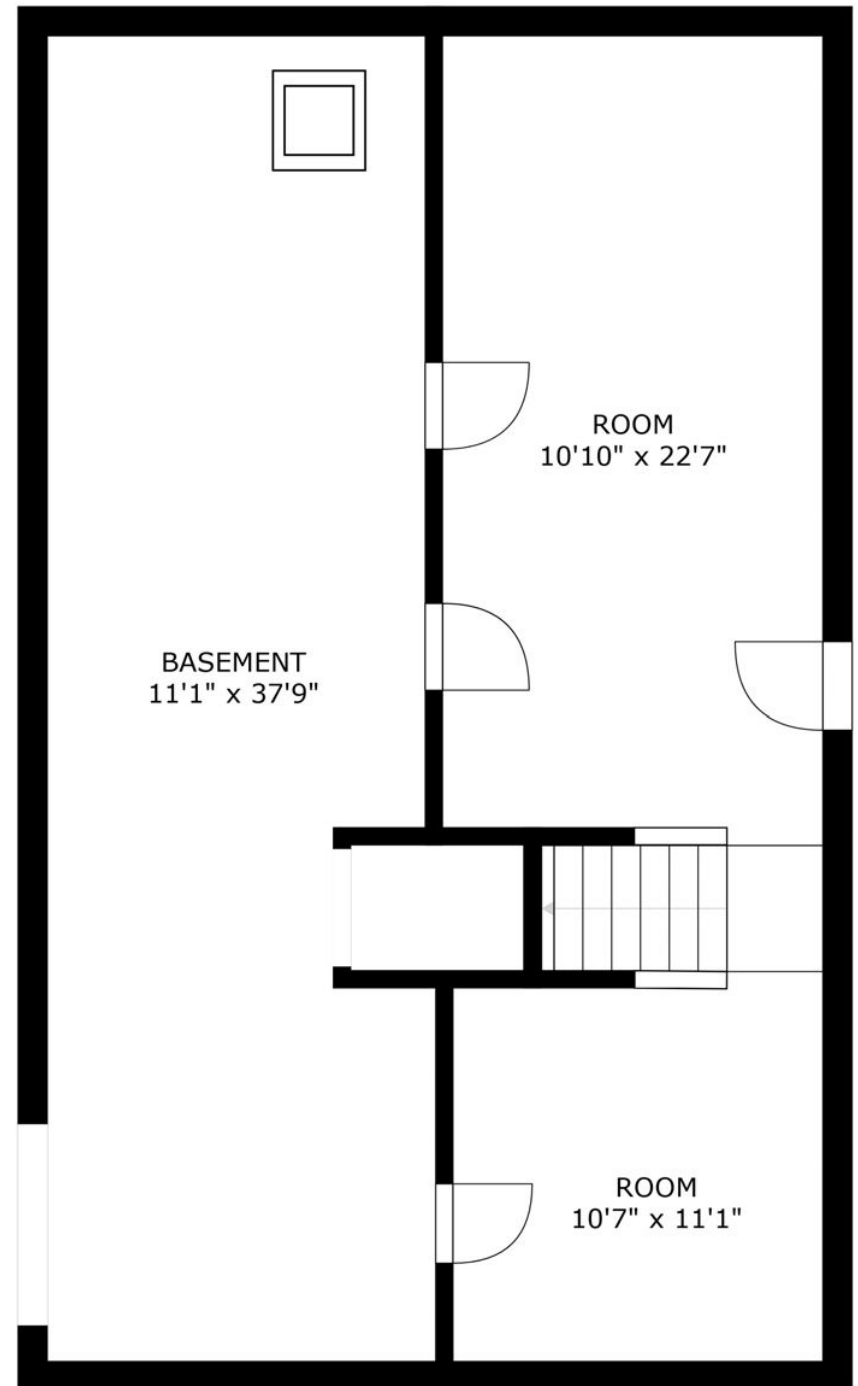
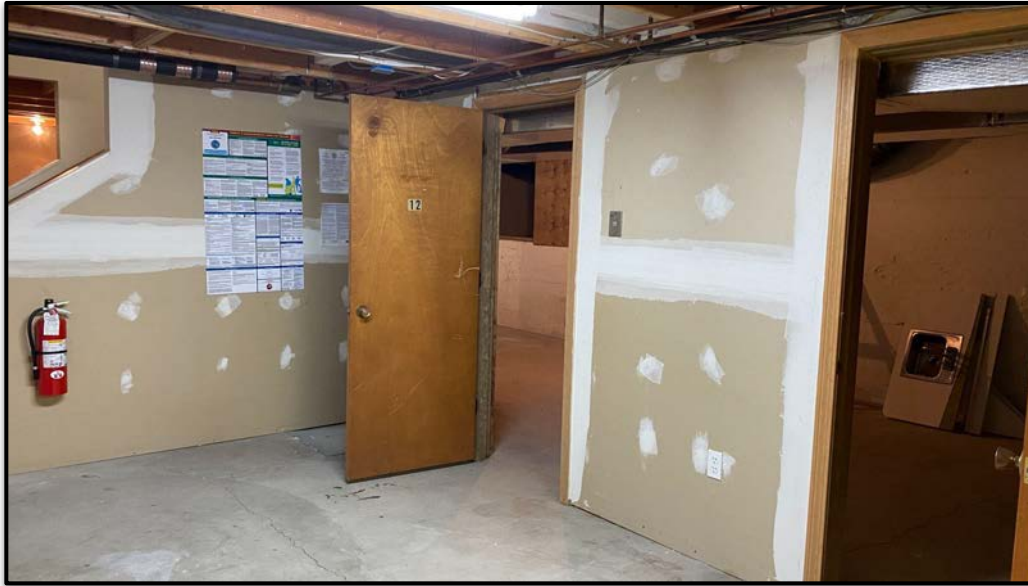
MAIN LEVEL FLOOR PLANS

6 East Main St, West Yarmouth, MA 02673



BASEMENT FLOOR PLANS

6 East Main St, West Yarmouth, MA 02673



Commercial
Realty Advisors

Commercial Realty Advisors' Disclaimer

This information has been secured from sources we believe to be reliable, but we make no representation or warranties, expressed or implied, as to the accuracy of the information contained herein. Commercial Realty Advisors, Inc. and the agent presenting this opportunity represent the Seller / Lessor, and are neither architects, engineers, inspectors, accountants nor attorneys, and therefore all buyers / tenants must consult with their own architects, engineers, inspectors, accountants or attorneys as to financial, zoning, lot line, handicapped accessibility, flood plain, mechanical, structural, or environmental concerns. Buyer must verify all information and bears all the risk for inaccuracies. Referenced square footage and acreage and sketched outlines are approximate, and this information package is subject to change.

ABOUT

Commercial Realty Advisors, Inc. specializes in commercial and industrial real estate, mergers, acquisitions, joint ventures, divestitures, and other business broker strategies. It is a commercial and real estate brokerage based in Hyannis, Massachusetts, specializing in middle-market transitions. The culture of our firm is that of an investment bank with a premium placed on intellectual vitality, relationship management, and knowledge of geographic markets. A cadre of well-educated and successful experts partner with clients to achieve objectives in a cost and time- effective manner. Our business is broadly based. Our real estate practice includes development, investment, and other commercial sale, lease, and management arrangements. Transactions include manufacturing, retailing, food processing, restaurant and hospitality, golf course, marinas, and other businesses.



SCAN THE QR
CODE TO VISIT
COMREALTY.NET!

KEVIN PEPE

Managing Director

Office: 508-862-9000, ext. 105

kpepe@comrealty.net

**COMMERCIAL REALTY
ADVISORS, INC.**

222 West Main St. Hyannis, MA
508-862-9000 | comrealty.net

LICENSE #6295

