

**OFFERING MEMORANDUM**  
*First Floor Professional Office Space*

**FOR  
LEASE**

**KEVIN PEPE**

Cell: 508-962-5022

KPepe@ComRealty.net

**Commercial Realty Advisors, Inc.**

222 West Main Street, Hyannis, MA

Office: 508-862-9000

ComRealty.net [f](#) [i](#) [in](#)



**33 Bassett Lane**

**FOR LEASE**

**AREA**

**HYANNIS**

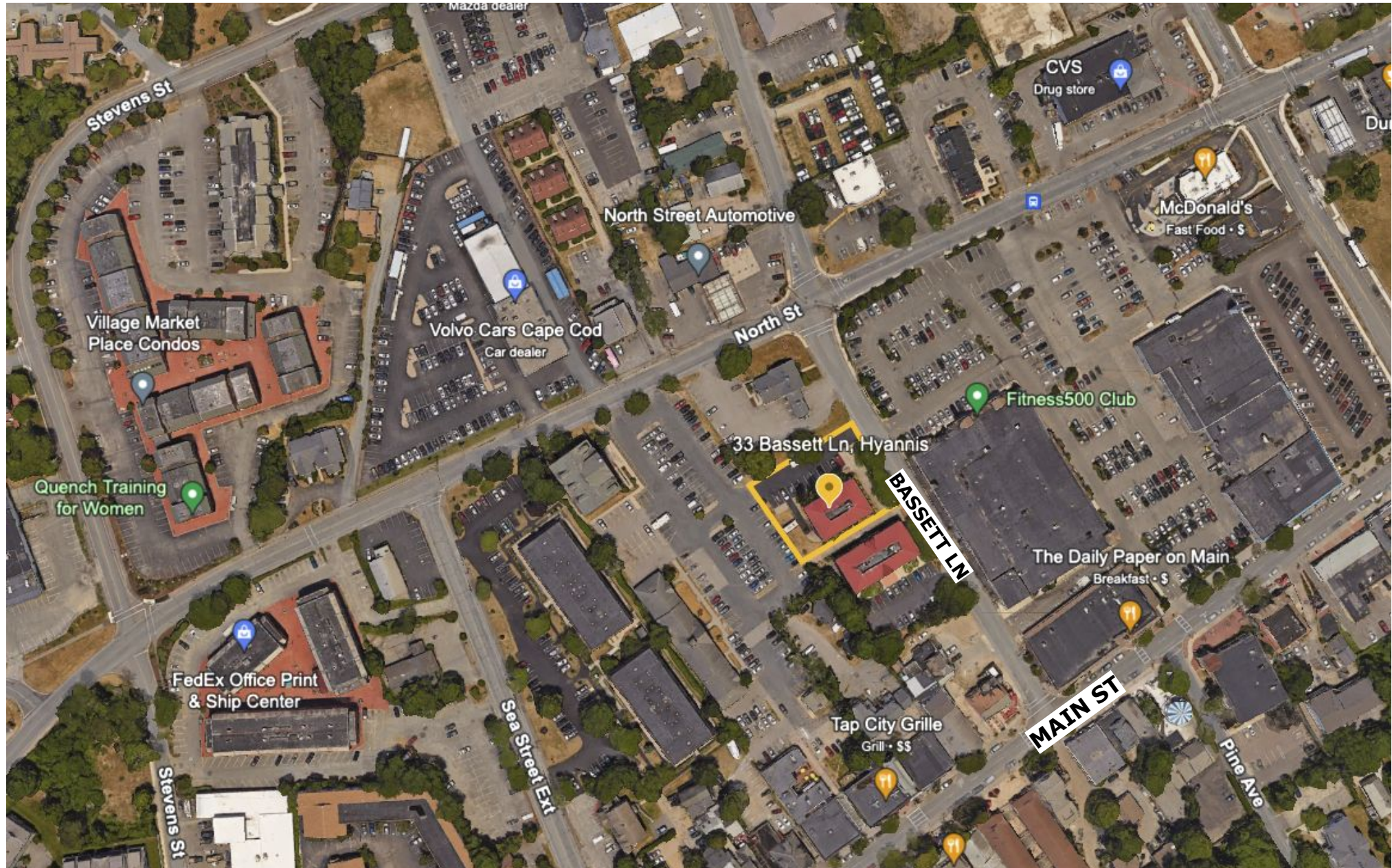
**First Floor Units Starting  
at \$500/Month**

**Starting at ±100 SF &  
up to ±950 SF each.**



# PROPERTY LOCATION

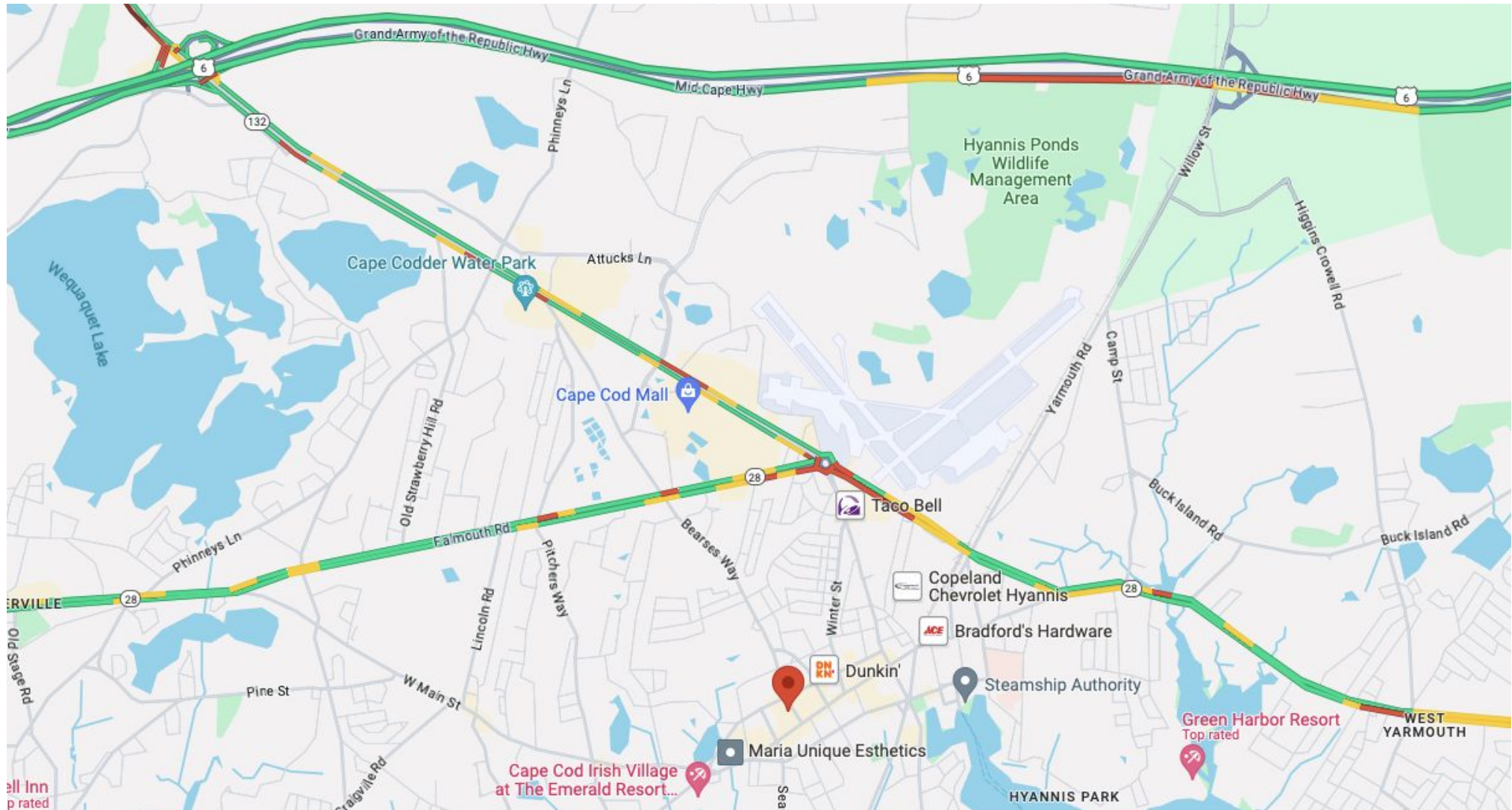
33 Bassett Lane, Hyannis, MA 02601





# PROPERTY LOCATION

*33 Bassett Lane, Hyannis, MA 02601*

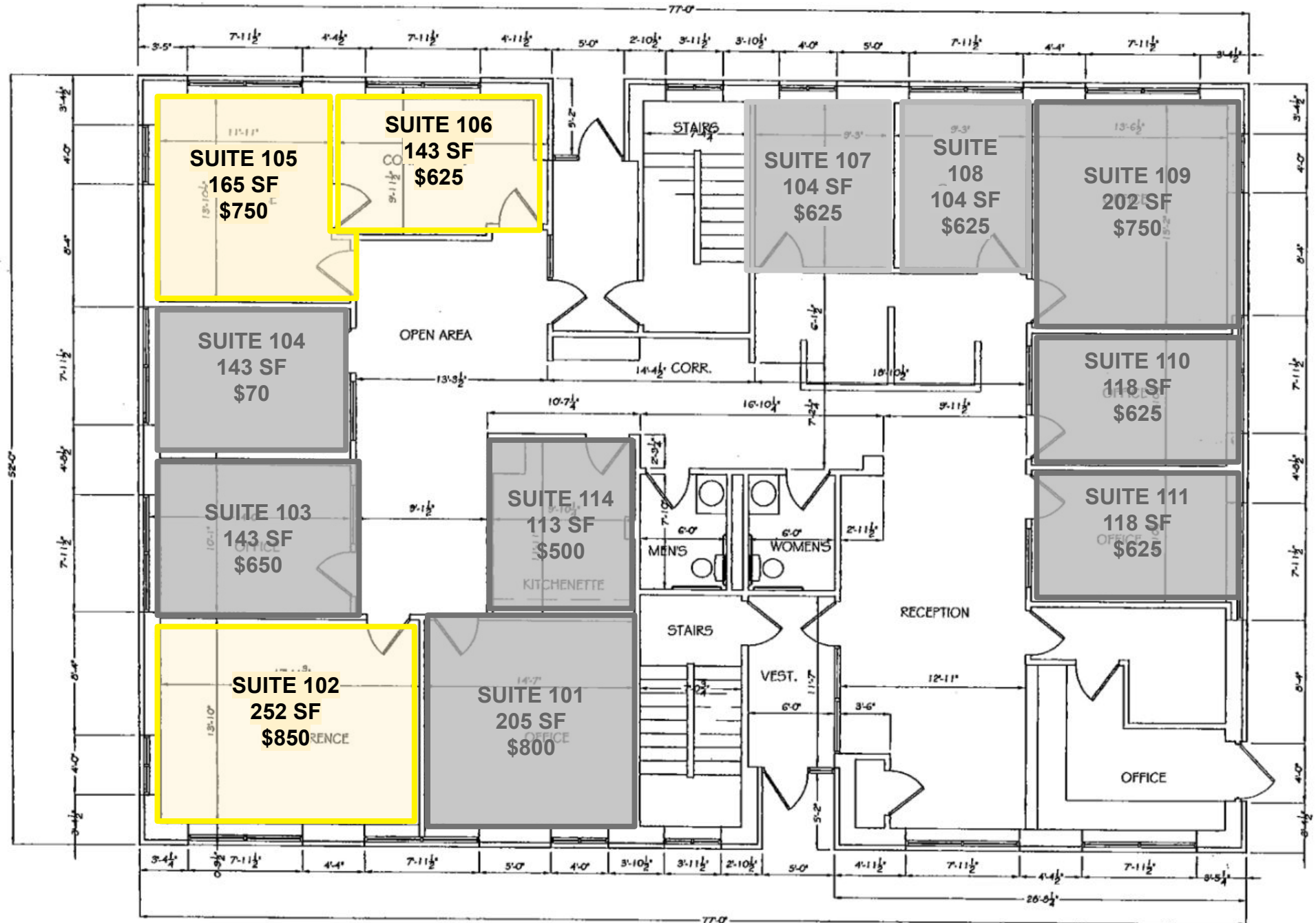


Shared office space in an ±8,000 Sq. Ft. professional office building. This professional office building is ±4,000 Sq. Ft. per floor with a full storage basement. Bassett Lane is located in Cape Cod's premier business location, Downtown Hyannis, midblock from Main Street and North Street. Ample parking is located onsite, the property also abuts a public parking facility.

- Spaces are available for lease on the first floor. (Second floor is also available to lease as a whole)
- Central AC and gas heat (included in rent).
- Building was constructed in 1985 (major renovations 2022).
- Zoned HVB (Hyannis Village Business) by the Town of Barnstable.

# PROPERTY FLOOR PLANS

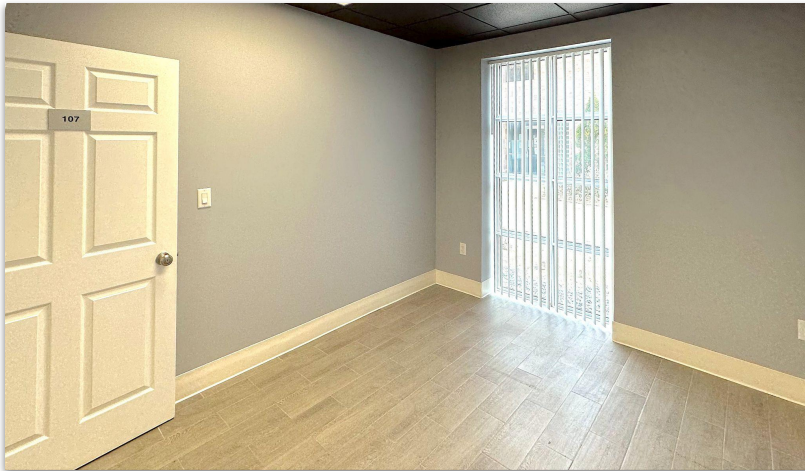
33 Bassett Lane, Hyannis, MA 02601





# Pictures

*33 Bassett Lane, Hyannis, MA 02601*





Commercial  
**Realty Advisors**

## Commercial Realty Advisors' Disclaimer

This information has been secured from sources we believe to be reliable, but we make no representation or warranties, expressed or implied, as to the accuracy of the information contained herein. Commercial Realty Advisors, Inc. and the agent presenting this opportunity represent the Seller / Lessor, and are neither architects, engineers, inspectors, accountants nor attorneys, and therefore all buyers / tenants must consult with their own architects, engineers, inspectors, accountants or attorneys as to financial, zoning, lot line, handicapped accessibility, flood plain, mechanical, structural, or environmental concerns. Buyer must verify all information and bears all the risk for inaccuracies. Referenced square footage and acreage and sketched outlines are approximate, and this information package is subject to change.

## ABOUT

Commercial Realty Advisors, Inc. specializes in commercial and industrial real estate, mergers, acquisitions, joint ventures, divestitures, and other business broker strategies. It is a commercial and real estate brokerage based in Hyannis, Massachusetts, specializing in middle-market transitions. The culture of our firm is that of an investment bank with a premium placed on intellectual vitality, relationship management, and knowledge of geographic markets. A cadre of well-educated and successful experts partner with clients to achieve objectives in a cost and time- effective manner. Our business is broadly based. Our real estate practice includes development, investment, and other commercial sale, lease, and management arrangements. Transactions include manufacturing, retailing, food processing, restaurant and hospitality, golf course, marinas, and other businesses.



## KEVIN PEPE

- ☎ Office: 508-862-9000
- ☎ Cell: 508-962-5022
- ✉ KPepe@ComRealty.net
- 📍 222 West Main Street, Hyannis, MA 02601
- 🌐 <https://comrealty.net/>

**LICENSE #6295**

