

OFFERING MEMORANDUM
Commercial Contractor/Warehouse Building

**FOR
LEASE**

KEVIN PEPE

Office: 508-862-9000

Cell: 508-962-5022

KPepe@ComRealty.net

222 West Main Street, Hyannis, MA 02601

<https://comrealty.net/>



103 Industrial Drive, Unit G

FOR LEASE

AREA

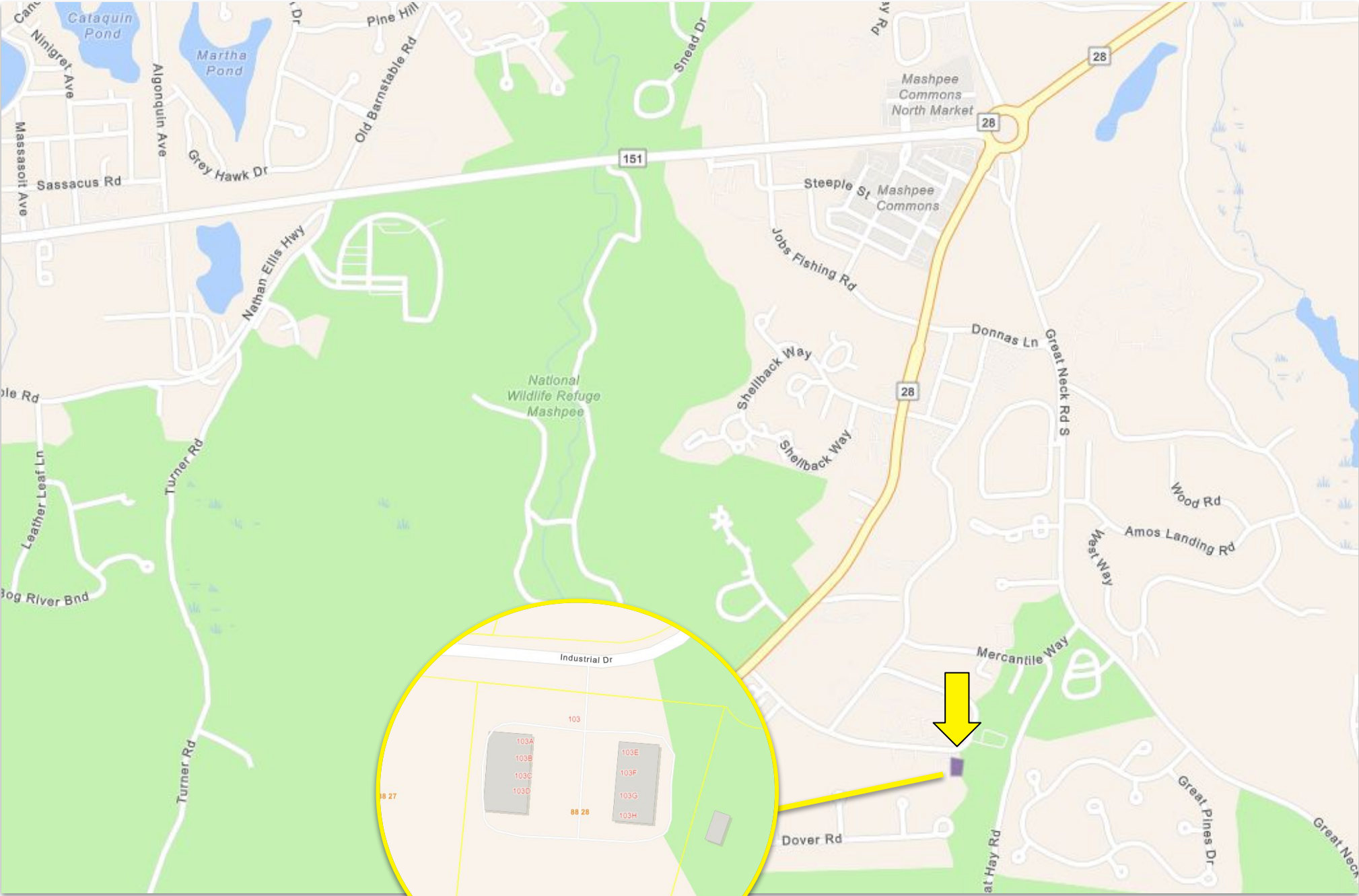
MASHPEE

\$19.50/SF NNN

±1,250 Sq. Ft.

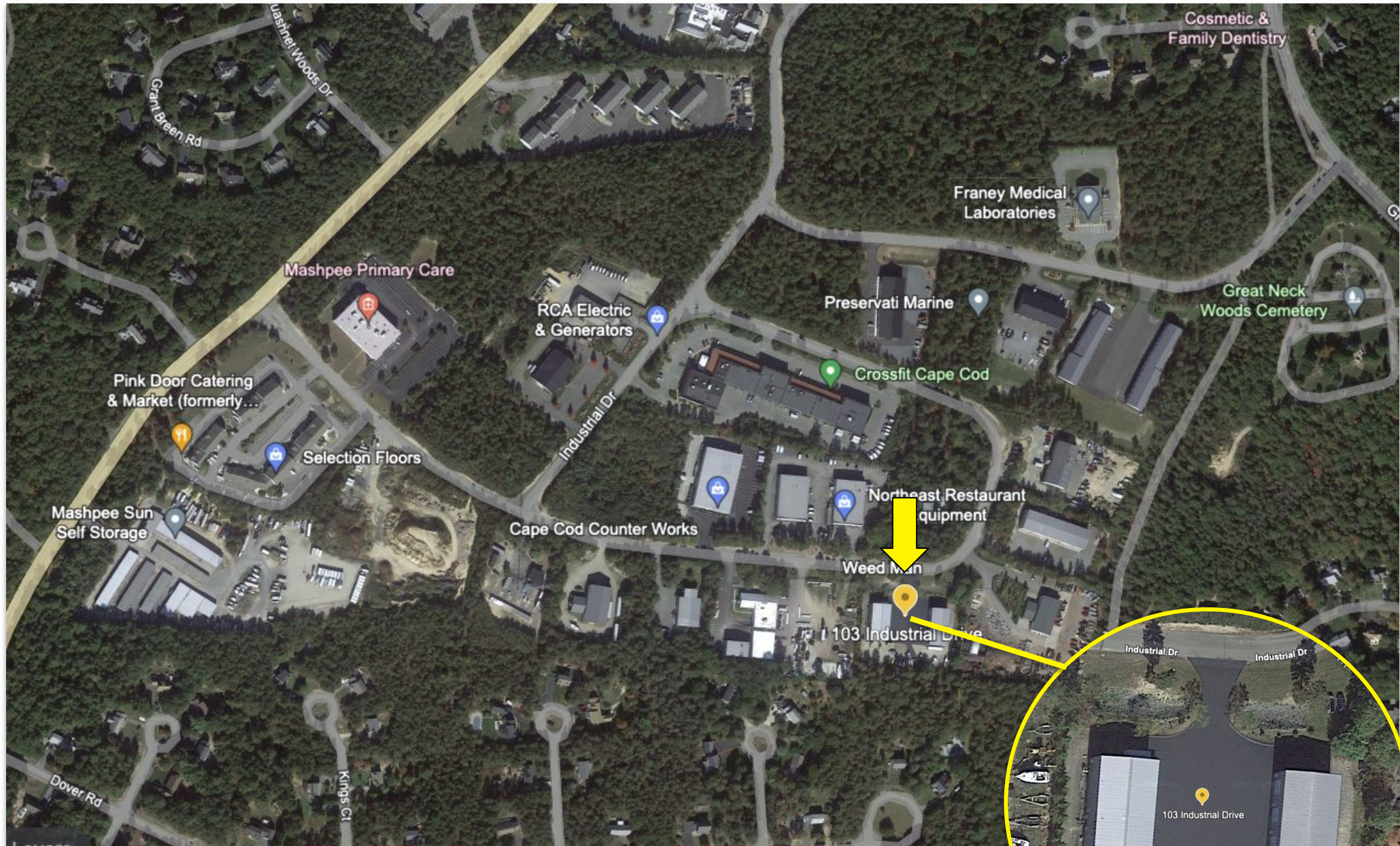
PROPERTY LOCATION

103 Industrial Drive, Unit G, Mashpee, MA



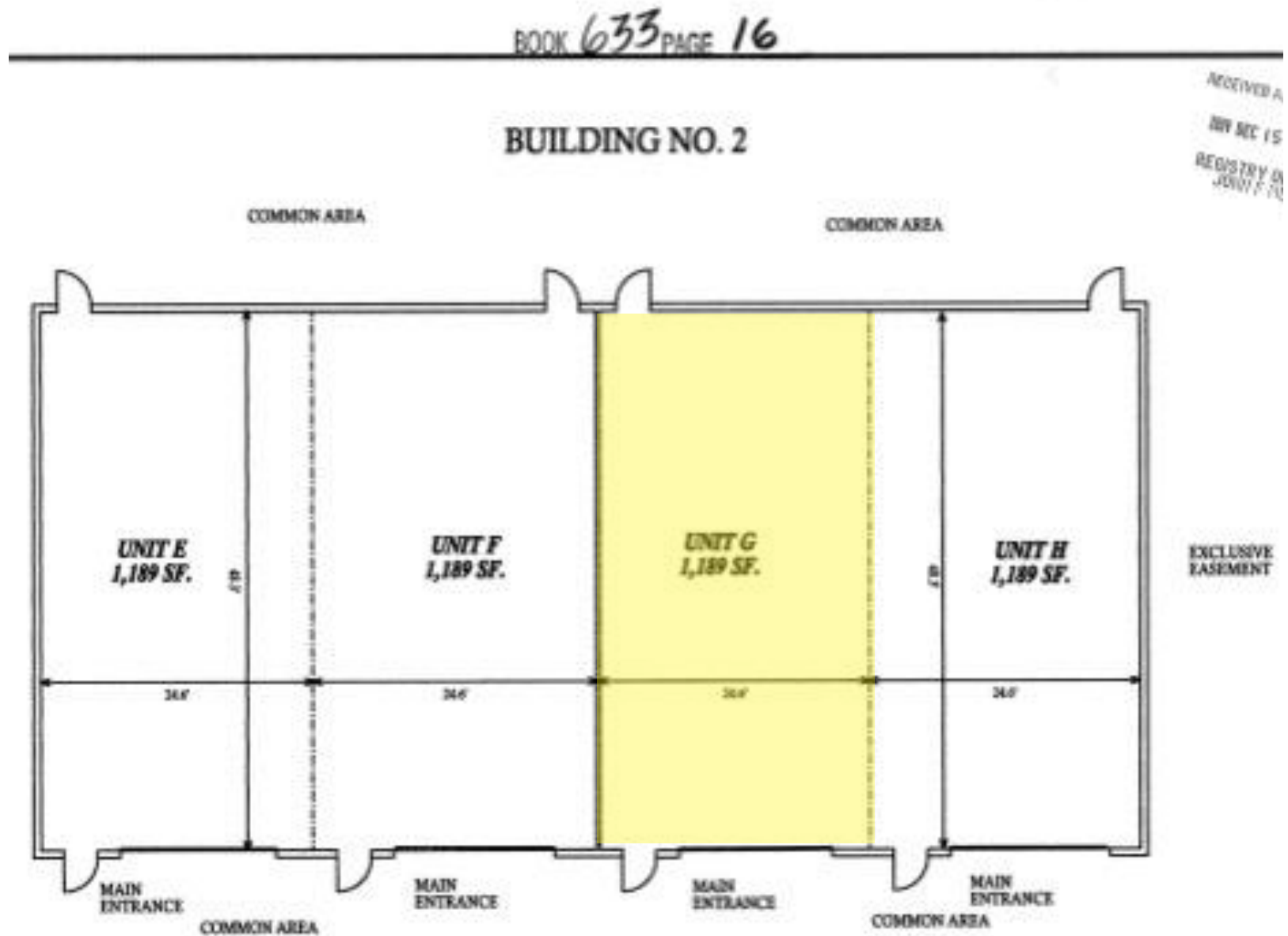
PROPERTY LOCATION

103 Industrial Drive, Unit G, Mashpee, MA



PROPERTY FLOOR PLANS

103 Industrial Drive, Unit G, Mashpee, MA



PROPERTY DETAILS

103 Industrial Drive, Unit G, Mashpee, MA



Year Built 2008

Size 1,250 Sq. Ft.

Stories 1

Address 103 Industrial Drive

Style Condo Warehouse

Book/Page 21921-205

Parcel ID 88-28-2G

Zoning I1



Features

- Close to Route 28 and Mashpee Commons
- Centrally located to Falmouth, Sandwich, Bourne, and Barnstable
- 12'x14' Overhead Door
- 2-3 Assigned parking spaces
- 20' ceilings
- One half-bath in process of being built

Commercial
Realty Advisors

Commercial Realty Advisors' Disclaimer

This information has been secured from sources we believe to be reliable, but we make no representation or warranties, expressed or implied, as to the accuracy of the information contained herein. Commercial Realty Advisors, Inc. and the agent presenting this opportunity represent the Seller / Lessor, and are neither architects, engineers, inspectors, accountants nor attorneys, and therefore all buyers / tenants must consult with their own architects, engineers, inspectors, accountants or attorneys as to financial, zoning, lot line, handicapped accessibility, flood plain, mechanical, structural, or environmental concerns. Buyer must verify all information and bears all the risk for inaccuracies. Referenced square footage and acreage and sketched outlines are approximate, and this information package is subject to change.

ABOUT

Commercial Realty Advisors, Inc. specializes in commercial and industrial real estate, mergers, acquisitions, joint ventures, divestitures, and other business broker strategies. It is a commercial and real estate brokerage based in Hyannis, Massachusetts, specializing in middle-market transitions. The culture of our firm is that of an investment bank with a premium placed on intellectual vitality, relationship management, and knowledge of geographic markets. A cadre of well-educated and successful experts partner with clients to achieve objectives in a cost and time- effective manner. Our business is broadly based. Our real estate practice includes development, investment, and other commercial sale, lease, and management arrangements. Transactions include manufacturing, retailing, food processing, restaurant and hospitality, golf course, marinas, and other businesses.



SCAN THE QR
CODE TO VISIT
COMREALTY.NET!

KEVIN PEPE

Managing Director

Office: 508-862-9000, ext. 105

kpepe@comrealty.net

**COMMERCIAL REALTY
ADVISORS, INC.**

222 West Main St. Hyannis, MA
508-862-9000 | comrealty.net

LICENSE #6295

