

Commercial
Realty Advisors

OFFERING MEMORANDUM

Professional Office Building

Now Available to Lease!



KEVIN PEPE

📞 Office: 508-862-9000

📱 Cell: 508-962-5022

✉️ KPepe@ComRealty.net

📍 222 West Main Street, Hyannis, MA 02601

🌐 <https://comrealty.net/>



16 Jan Sebastian

FOR LEASE

AREA

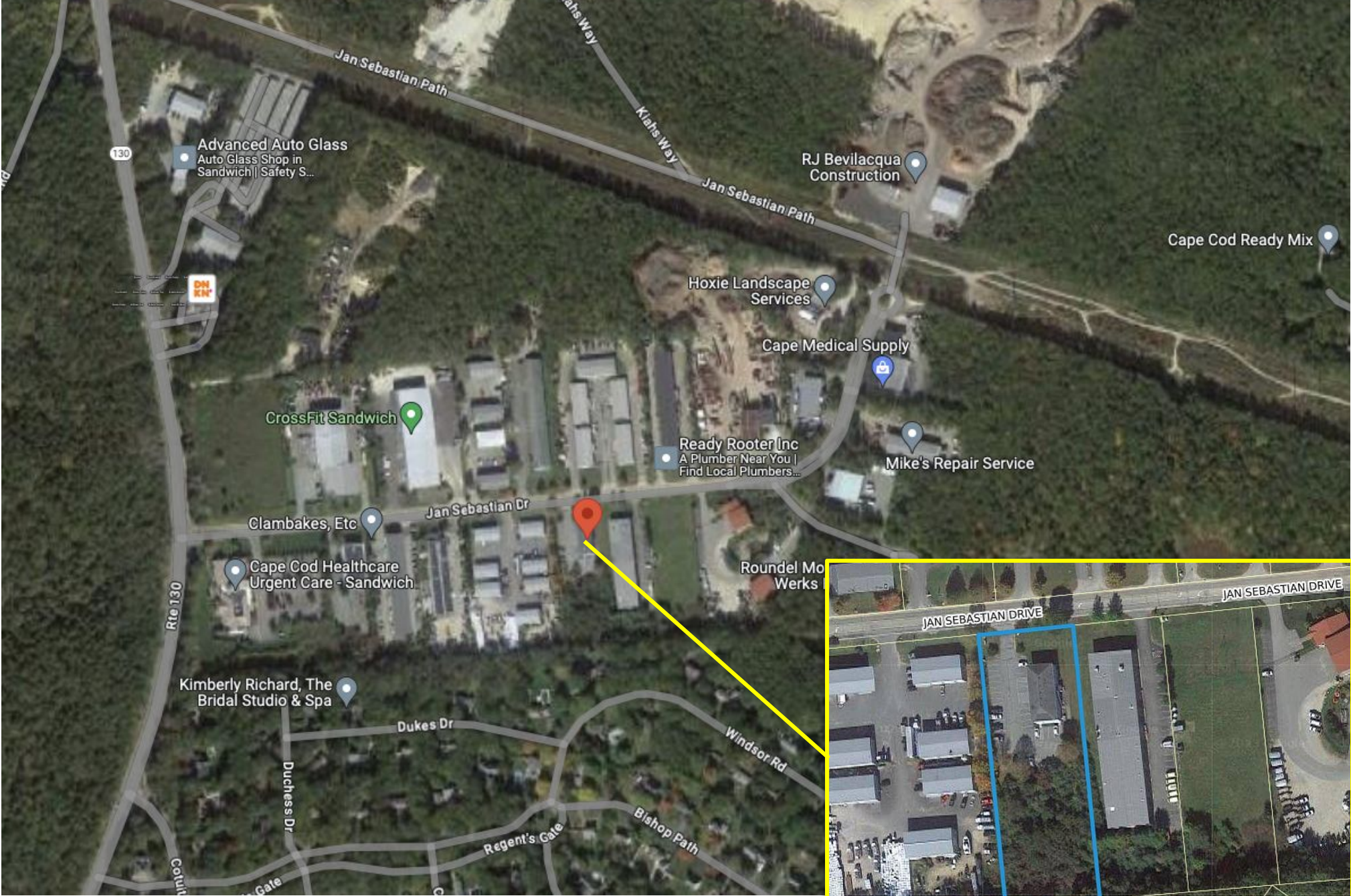
SANDWICH

**\$18.50/Sq Ft
NNN**

±800-7,000 Sq Ft

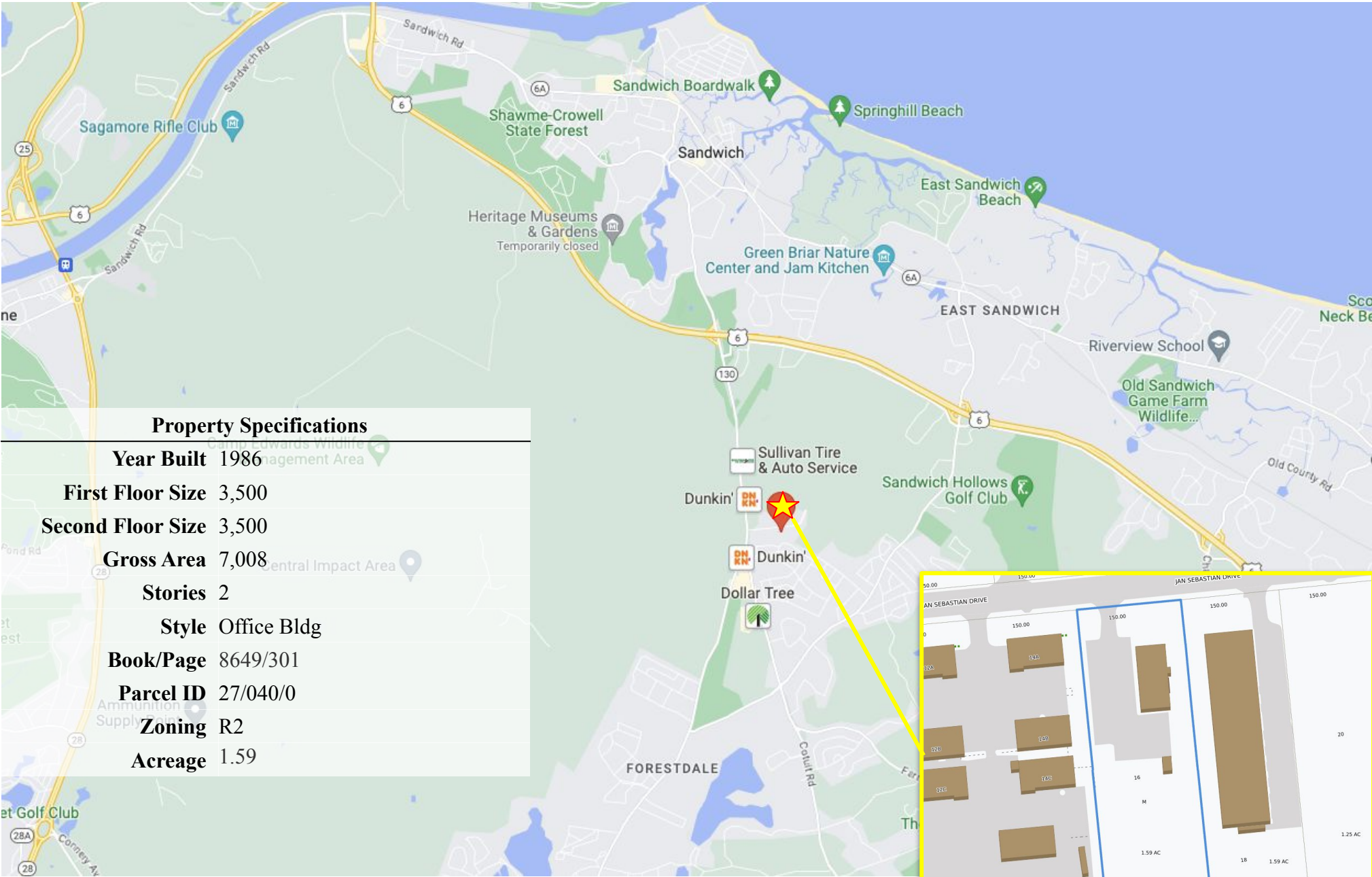
PROPERTY MAP

16 Jan Sebastian Drive, Sandwich, MA 02563



PROPERTY LOCATION

16 Jan Sebastian Drive, Sandwich, MA 02563



Property Specifications

Year Built	1986
First Floor Size	3,500
Second Floor Size	3,500
Gross Area	7,008
Stories	2
Style	Office Bldg
Book/Page	8649/301
Parcel ID	27/040/0
Zoning	R2
Acreage	1.59

EXTERIOR PICTURES

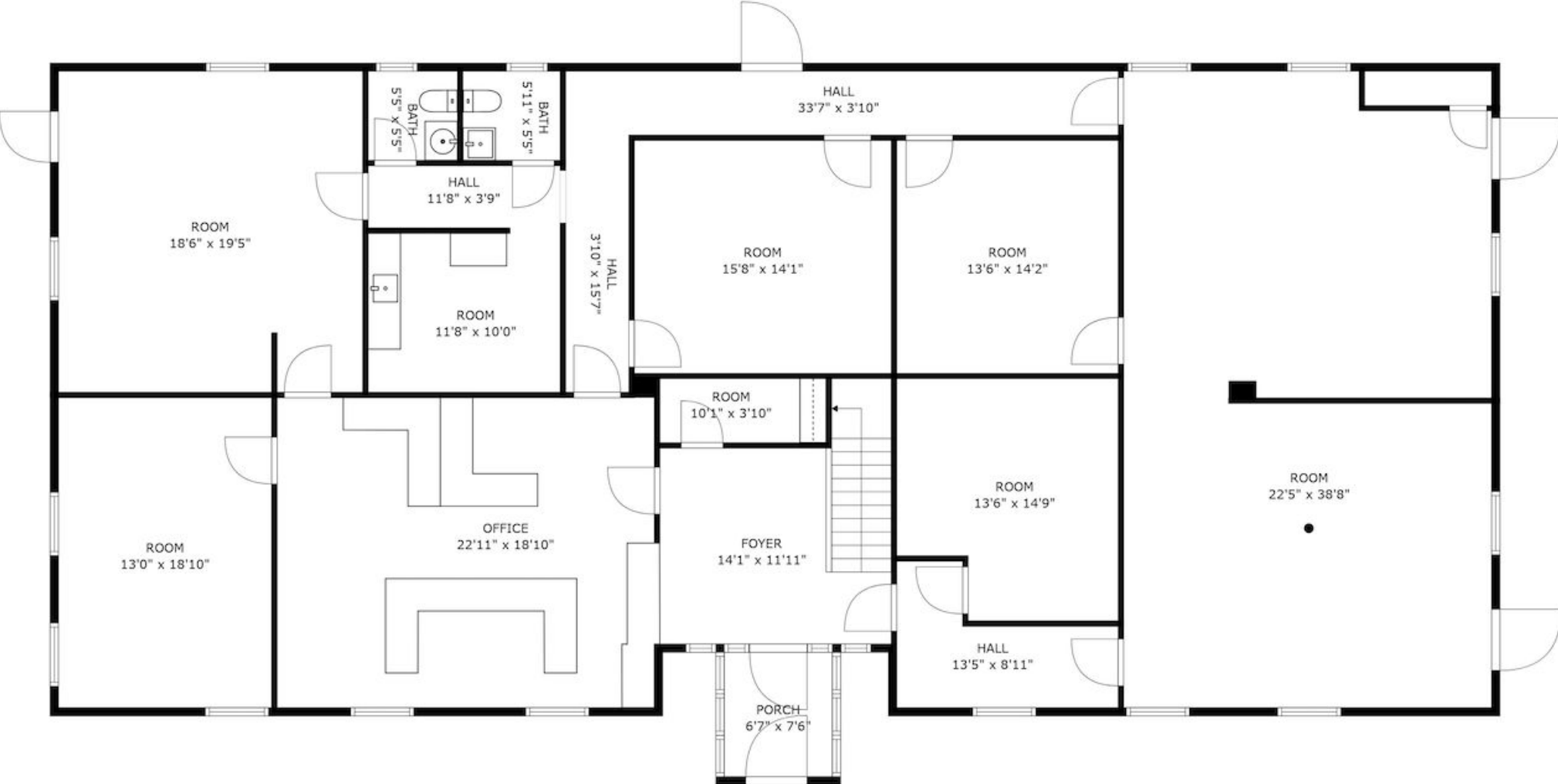
16 Jan Sebastian Drive, Sandwich, MA 02563



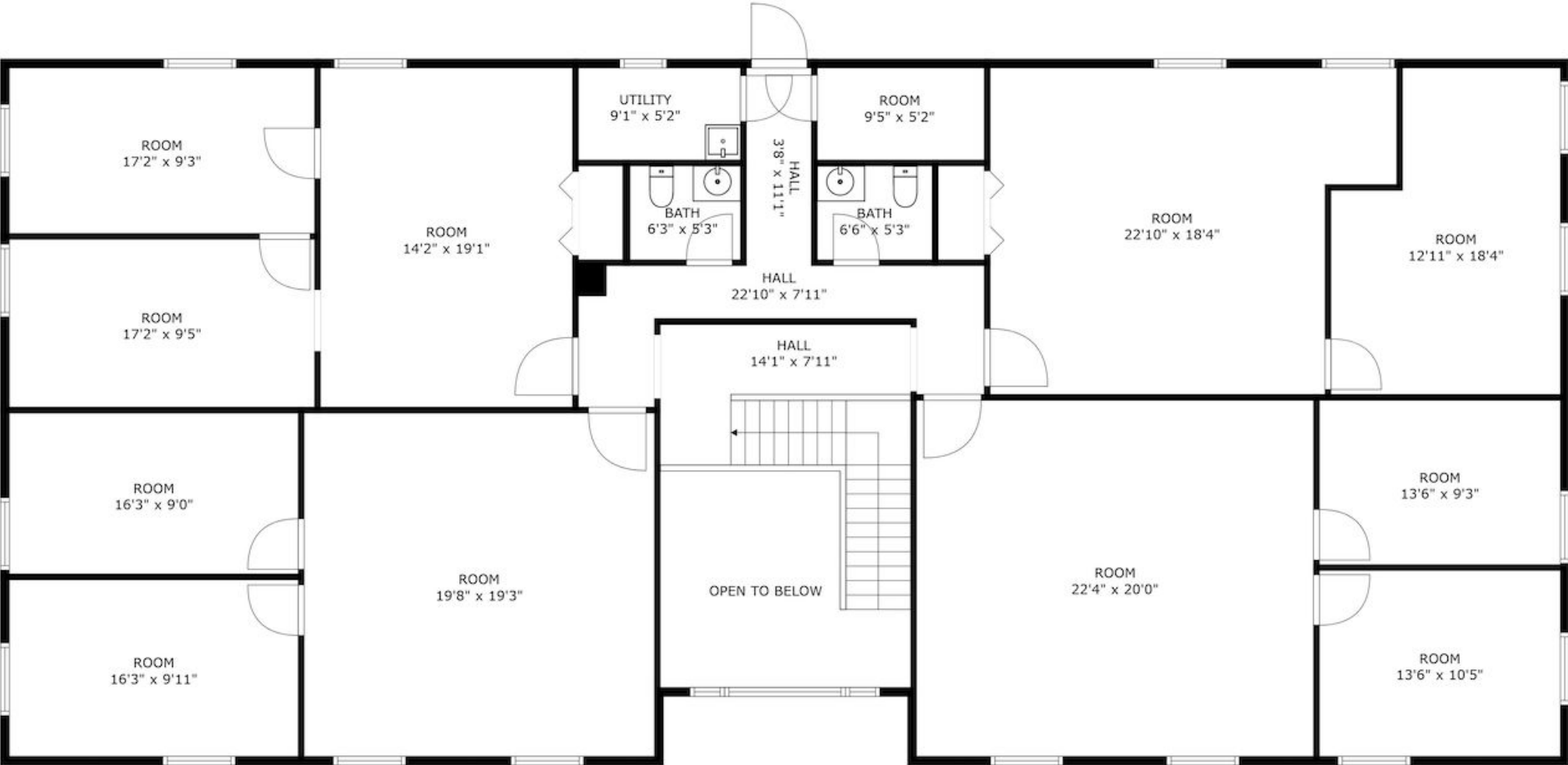
INTERIOR PICTURES

16 Jan Sebastian Drive, Sandwich, MA 02563





1st Floor



2nd Floor

Commercial
Realty Advisors

Commercial Realty Advisors' Disclaimer

This information has been secured from sources we believe to be reliable, but we make no representation or warranties, expressed or implied, as to the accuracy of the information contained herein. Commercial Realty Advisors, Inc. and the agent presenting this opportunity represent the Seller / Lessor, and are neither architects, engineers, inspectors, accountants nor attorneys, and therefore all buyers / tenants must consult with their own architects, engineers, inspectors, accountants or attorneys as to financial, zoning, lot line, handicapped accessibility, flood plain, mechanical, structural, or environmental concerns. Buyer must verify all information and bears all the risk for inaccuracies. Referenced square footage and acreage and sketched outlines are approximate, and this information package is subject to change.

ABOUT

Commercial Realty Advisors, Inc. specializes in commercial and industrial real estate, mergers, acquisitions, joint ventures, divestitures, and other business broker strategies. It is a commercial and real estate brokerage based in Hyannis, Massachusetts, specializing in middle-market transitions. The culture of our firm is that of an investment bank with a premium placed on intellectual vitality, relationship management, and knowledge of geographic markets. A cadre of well-educated and successful experts partner with clients to achieve objectives in a cost and time- effective manner. Our business is broadly based. Our real estate practice includes development, investment, and other commercial sale, lease, and management arrangements. Transactions include manufacturing, retailing, food processing, restaurant and hospitality, golf course, marinas, and other businesses.



SCAN THE QR
CODE TO VISIT
COMREALTY.NET!



**COMMERCIAL REALTY
ADVISORS, INC.**
222 West Main St. Hyannis, MA
508-862-9000 | comrealty.net

LICENSE #6295
 **MLS**
MULTIPLE LISTING SERVICE