

## OFFERING MEMORANDUM

JORDAN PLAZA- Retail/Office/Medical

**FOR  
LEASE**

**KEVIN PEPE**

508-862-9000 Fax: 508-862-9200

Cell: 508-962-5022

KPepe@ComRealty.net

222 West Main Street, Hyannis, MA

ComRealty.net



**3119 Cranberry Hwy**

**FOR LEASE**

**AREA**

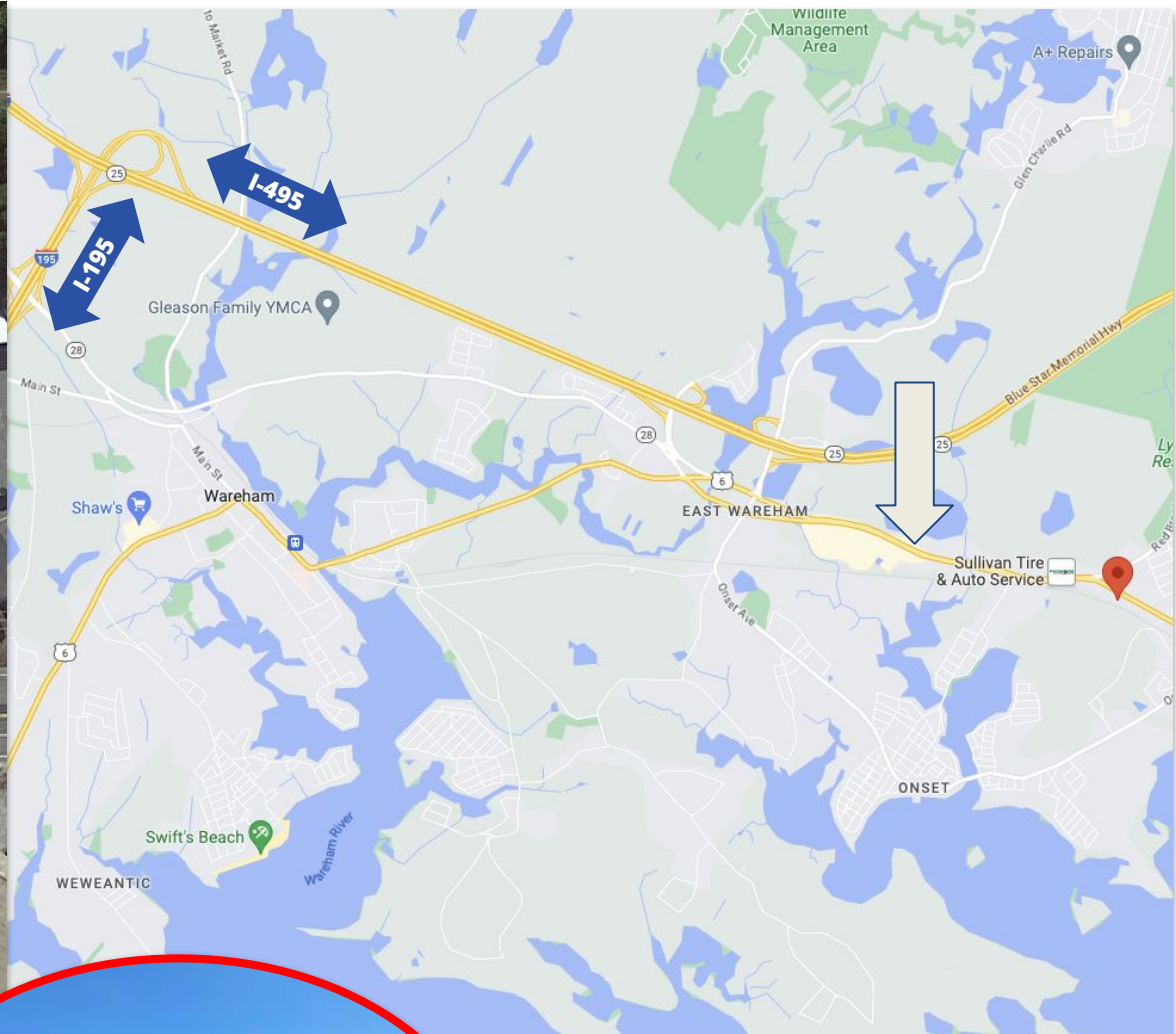
East Wareham

\$18.50/Sq Ft  
NNN

From 300 Sq Ft  
to 5,000+ Sq Ft

# PROPERTY LOCATION

3119 Cranberry Highway, East Wareham, MA 02538



# PROPERTY SPECIFICATIONS

3119 Cranberry Highway, East Wareham, MA 02538

**Year Built** 2004

**Size** 24,569

**Stories** 2

**Bathrooms** 4

**Address** 3119 Cranberry Highway, Wareham

**Style** Plaza w/anchr

**Book/Page** 50341/0276

**Use Code** 3400

**Parcel ID** 2796

**Zoning** SC



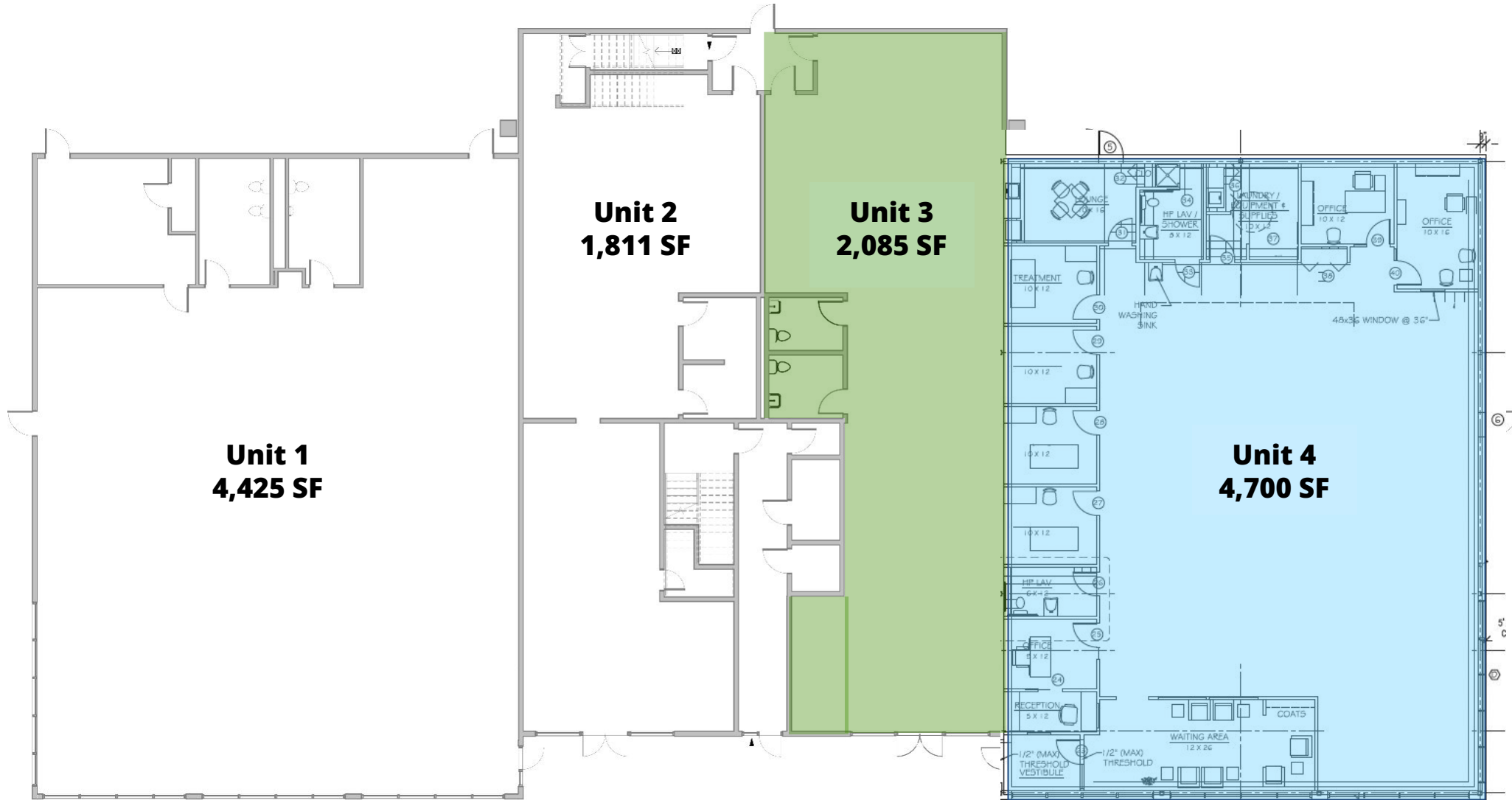
## Features:

- Two Story Commercial Building
- On-site Parking for 70+ cars
- All day foot traffic from businesses Nature's Medicines and Select Physical Therapy who occupy Units 1 and 2.
- Convenient elevator
- Serviced by municipal sewer and water
- Gas fired hot air HVAC system
- On-site management
- Centrally located for easy access to service Plymouth, Barnstable, and Bristol Counties.
- Convenient Access to I-495 and I-195, and Rt 3



# FLOOR PLANS

First Floor of 3119 Cranberry Highway, East Wareham, MA 02538

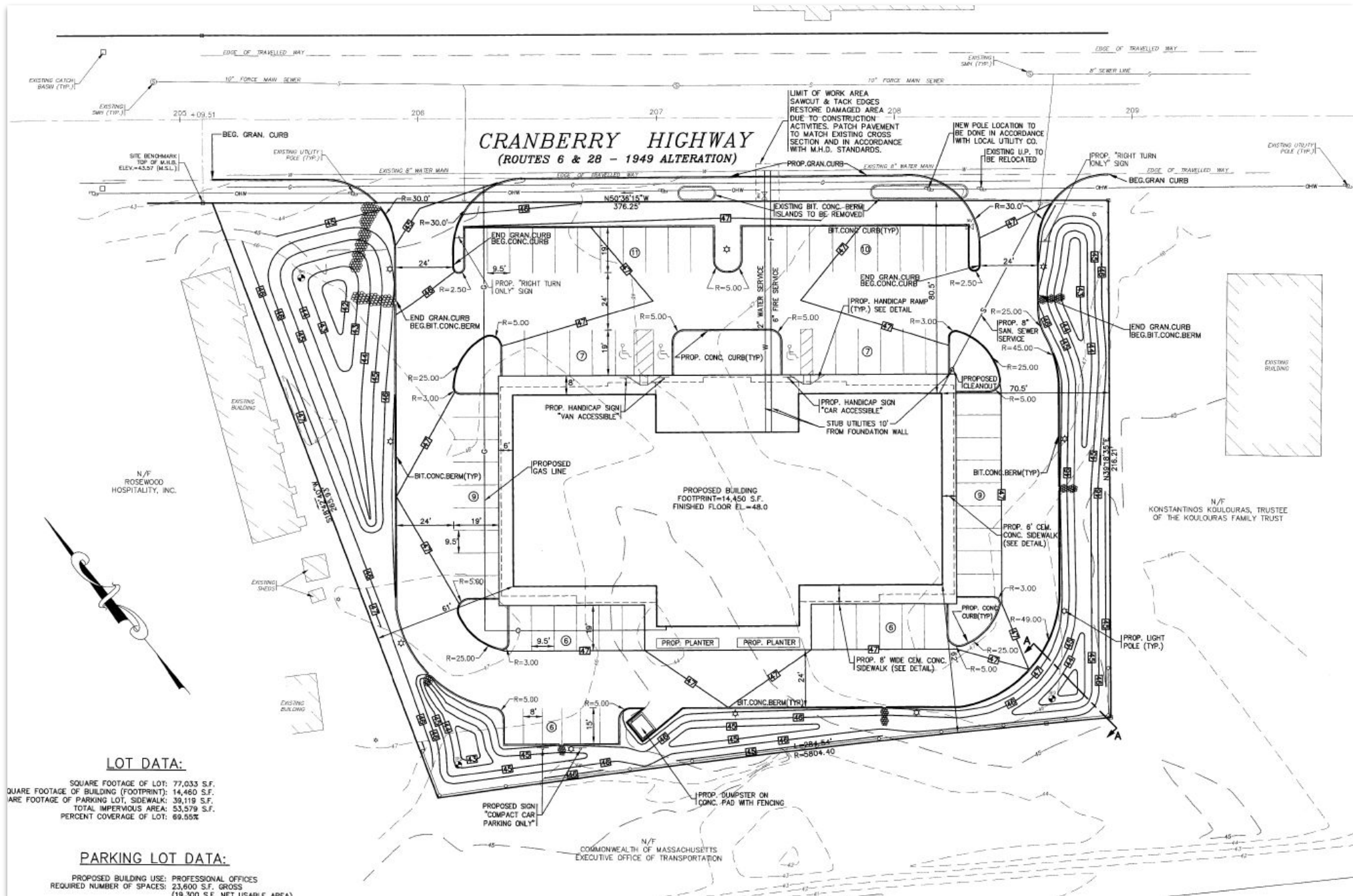


# FLOOR PLANS

Second Floor of 3119 Cranberry Highway, East Wareham, MA 02538



**3119 Cranberry Highway, East Wareham, MA 02538**



# INTERIOR PICTURES

3119 Cranberry Highway, East Wareham, MA 02538



# INTERIOR PICTURES

3119 Cranberry Highway, East Wareham, MA 02538



# EXTERIOR PICTURES

3119 Cranberry Highway, East Wareham, MA 02538



Commercial  
**Realty Advisors**

## Commercial Realty Advisors' Disclaimer

This information has been secured from sources we believe to be reliable, but we make no representation or warranties, expressed or implied, as to the accuracy of the information contained herein.

Commercial Realty Advisors, Inc. and the agent presenting this opportunity represent the Seller / Lessor, and are neither architects, engineers, inspectors, accountants nor attorneys, and therefore all buyers / tenants must consult with their own architects, engineers, inspectors, accountants or attorneys as to financial, zoning, lot line, handicapped accessibility, flood plain, mechanical, structural, or environmental concerns. Buyer must verify all information and bears all the risk for inaccuracies. Referenced square footage and acreage and sketched outlines are approximate, and this information package is subject to change.

## ABOUT

Commercial Realty Advisors, Inc. specializes in commercial and industrial real estate, mergers, acquisitions, joint ventures, divestitures, and other business broker strategies. It is a commercial and real estate brokerage based in Hyannis, Massachusetts, specializing in middle-market transitions. The culture of our firm is that of an investment bank with a premium placed on intellectual vitality, relationship management, and knowledge of geographic markets. A cadre of well-educated and successful experts partner with clients to achieve objectives in a cost and time- effective manner. Our business is broadly based. Our real estate practice includes development, investment, and other commercial sale, lease, and management arrangements. Transactions include manufacturing, retailing, food processing, restaurant and hospitality, golf course, marinas, and other businesses.



SCAN THE QR  
CODE TO VISIT  
COMREALTY.NET!



**COMMERCIAL REALTY  
ADVISORS, INC.**  
222 West Main St. Hyannis, MA  
508-862-9000 | comrealty.net

**LICENSE #6295**  
 **MLS**  
REALTOR MULTIPLE LISTING SERVICE