

Professional Office ondo iniu



1292 Route 28, Unit C3
YARMOUTH, MA

FOR SALE

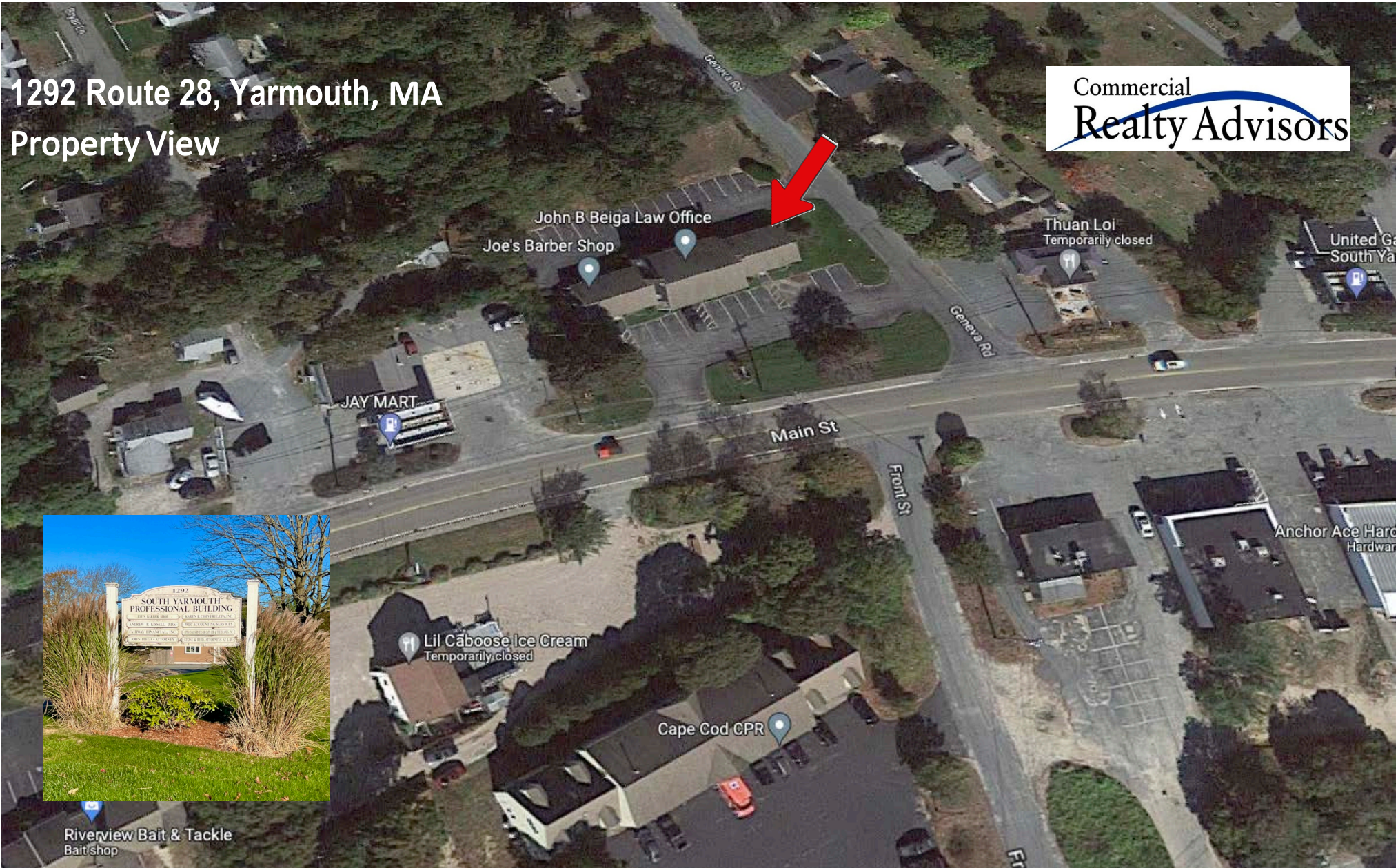
For Sale	Area
\$119,000	+/- 630 Sq. Ft.

pace Highlights

- ✓ Beautiful, well-situated Professional Office Building with Excellent Parking
- ✓ 3 Comfortable Office Spaces, Shared Rest Room
- ✓ 1st Floor Office space

- ✓ Plent of off-street parking
- ✓ Perfect for e ote Office use
- ✓ Plent of near services for e plo ees or custo ers and lients
- ✓ Call today to schedule a showing!

1292 Route 28, Yarmouth, MA Property View



Commercial Realty Advisors' Disclaimer

This information has been secured from sources we believe to be reliable, but we make no representation or warranties, expressed or implied, as to the accuracy of the information contained herein. Commercial Realty Advisors, Inc. and the agent presenting this opportunity represent the Seller / Lessor, and are neither architects, engineers, inspectors, accountants nor attorneys, and therefore all buyers / tenants must consult with their own architects, engineers, inspectors, accountants or attorneys as to financial, zoning, lot line, handicapped accessibility, flood plain, mechanical, structural, or environmental concerns. Buyer must verify all information and bears all the risk for inaccuracies. Referenced square footage and acreage and sketched outlines are approximate, and this information package is subject to change.



Property Specifications

PROPERTY DETAILS

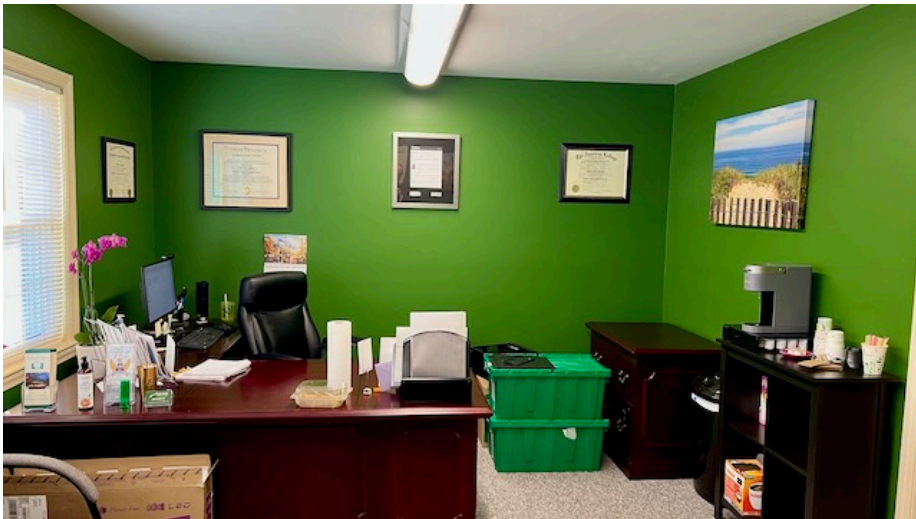
Effective Year Built	1967
Area	630
Address	1292 Main St, (Route 28) Yarmouth, MA
Style	Office Condominium
Stories	1
Zoning	Complies
Parcel ID	60/133/C3
Title	Barnstable County Registry of Deeds Bk/Pg-18283/234

FINANCIAL INFORMATION

Price for Sale	\$119,000
Condo Assessment	\$57,200
Total Assessed Value	\$57,200
2023 Monthly Fees	\$263

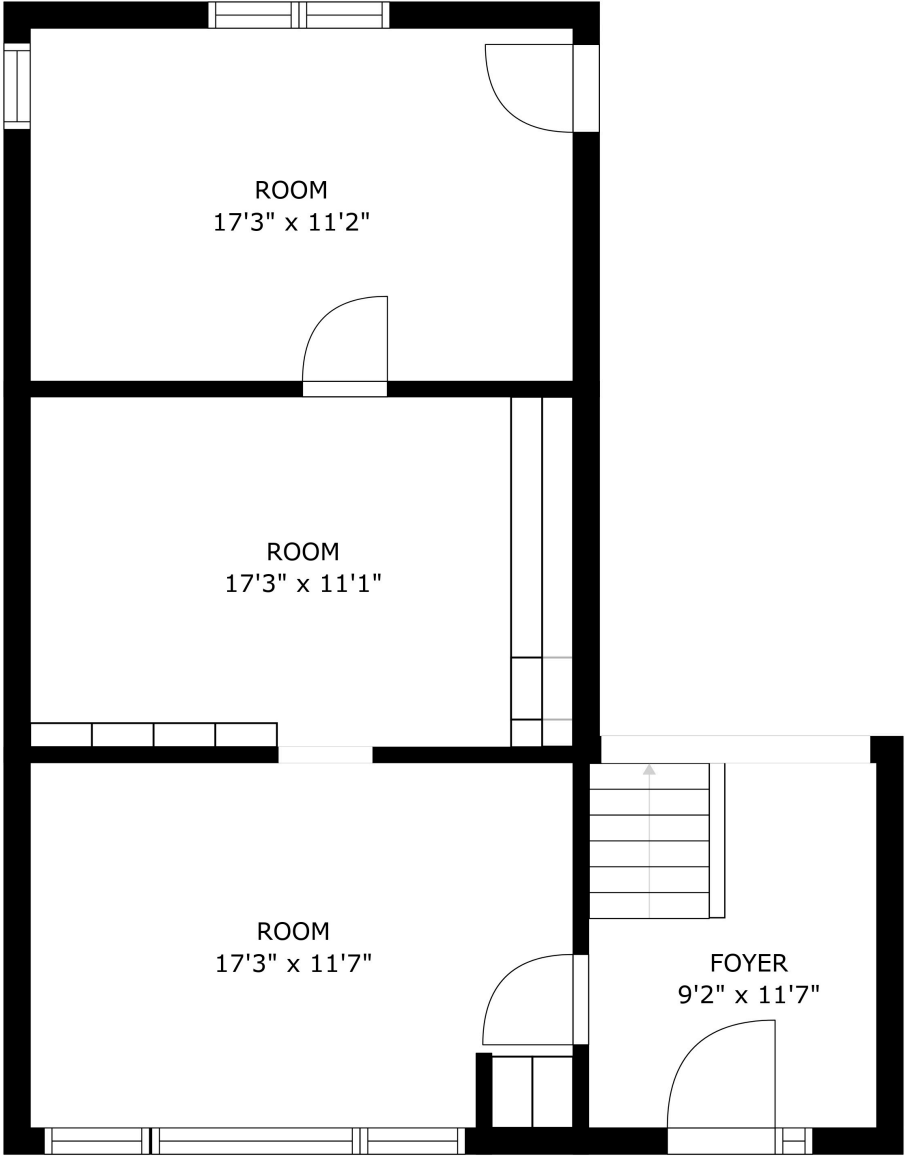


Property Images





Plan



This FloorPlan floor plan is intended to represent the flow of the property and may not accurately represent the dimensions of each room or the property as a whole.
Copyright © 2022 Financial Business Systems, Inc. All rights reserved.



Commercial Realty Advisors' Disclaimer

This information has been secured from sources we believe to be reliable, but we make no representation or warranties, expressed or implied, as to the accuracy of the information contained herein. Commercial Realty Advisors, Inc. and the agent presenting this opportunity represent the Seller / Lessor, and are neither architects, engineers, inspectors, accountants nor attorneys, and therefore all buyers / tenants must consult with their own architects, engineers, inspectors, accountants or attorneys as to financial, zoning, lot line, handicapped accessibility, flood plain, mechanical, structural, or environmental concerns. Buyer must verify all information and bears all the risk for inaccuracies. Referenced square footage and acreage and sketched outlines are approximate, and this information package is subject to change.

License #6295





Commercial
Realty Advisors

**REAL ESTATE
SERVICES**

Kevin Pepe
President
508-862-9000 ext 105
kpepe@comrealty.net

Commercial Realty Advisors, Inc.
222 West Main Street
Hyannis, MA 02601
<https://comrealty.net>