

OFFERING MEMORANDUM

Retail/Office Space Available

**FOR
LEASE**

KEVIN PEPE

Office: 508-862-9000

Cell: 508-962-5022

KPepe@ComRealty.net

222 West Main Street, Hyannis, MA 02601

<https://comrealty.net/>



4 BARLOWS LANDING, U-7

FOR LEASE

AREA

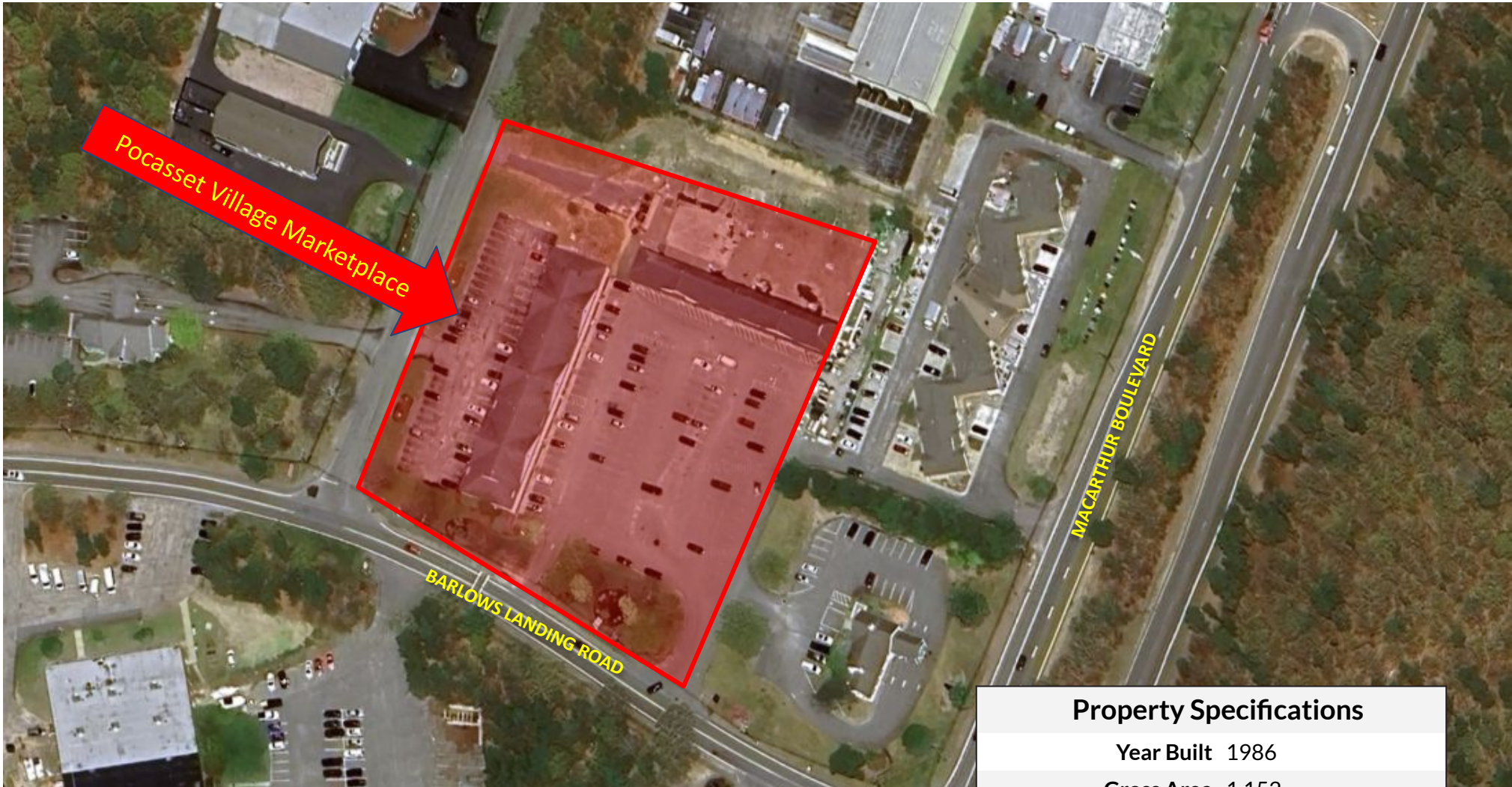
POCASSET, MA

**\$1,600/MONTH
N-N-N**

± 1,152 SF

PROPERTY LOCATION

4 Barlow's Landing Road, Unit 7, Pocasset, MA



This bright and well-lit **1,152 sq. ft. retail/office space** is located at Unit 7, 4 Barlow's Landing Road, Pocasset, MA. Situated just off the heavily traveled MacArthur Boulevard and close to the Bourne Bridge, the location offers excellent accessibility to key routes, including Routes 28, 6, and 3.

Zoned **Business 2 (B2)**, this space is ideal for retail or office use, offering excellent visibility and accessibility in a busy and well-connected location.

Property Specifications

Year Built	1986
Gross Area	1,152
Stories	1
Style	Retail Condo
Parcel ID	39.0-225-7
Parcel ID	343/014/
Zoning	B2
Taxes	\$1,000+/- per year
Fees	\$247.50 per month

PROPERTY LOCATION

4 Barlow's Landing Road, Unit 7, Pocasset, MA

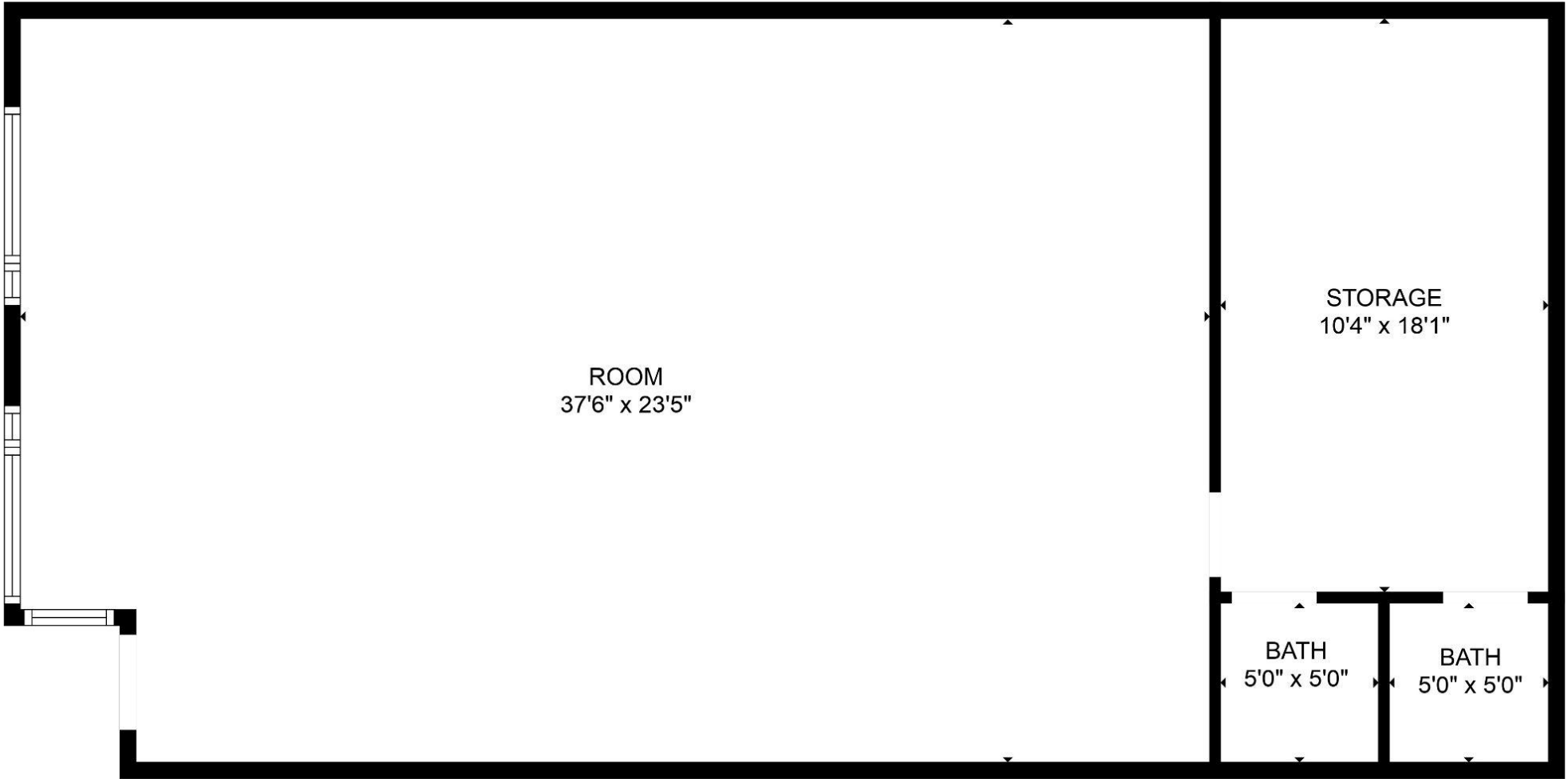


- **High Visibility:** Prominent display windows ensure excellent exposure.
- **Convenient Location:** Close to major North-South routes and key Cape Cod connectors.
- **Functional Layout:** Open floor plan with storage area and two restrooms.
- **Comfort & Convenience:** Air-conditioned space with off-street parking.
- **Strong Traffic:** High daily traffic counts, with peak volumes during summer.

INTERIOR PICTURES

4 Barlow's Landing Road, Unit 7, Pocasset, MA





ESTIMATED AREAS
GLA FLOOR 1: 0 sq. ft EXCLUDED AREAS 1182 sq. ft
Total GLA 0 sq. ft, total area 1182 sq. ft

FLOOR PLAN CREATED BY CUBICASA APP. MEASUREMENTS DEEMED HIGHLY RELIABLE BUT NOT GUARANTEED.

Commercial
Realty Advisors

Commercial Realty Advisors' Disclaimer

This information has been secured from sources we believe to be reliable, but we make no representation or warranties, expressed or implied, as to the accuracy of the information contained herein. Commercial Realty Advisors, Inc. and the agent presenting this opportunity represent the Seller / Lessor, and are neither architects, engineers, inspectors, accountants nor attorneys, and therefore all buyers / tenants must consult with their own architects, engineers, inspectors, accountants or attorneys as to financial, zoning, lot line, handicapped accessibility, flood plain, mechanical, structural, or environmental concerns. Buyer must verify all information and bears all the risk for inaccuracies. Referenced square footage and acreage and sketched outlines are approximate, and this information package is subject to change.

ABOUT

Commercial Realty Advisors, Inc. specializes in commercial and industrial real estate, mergers, acquisitions, joint ventures, divestitures, and other business broker strategies. It is a commercial and real estate brokerage based in Hyannis, Massachusetts, specializing in middle-market transitions. The culture of our firm is that of an investment bank with a premium placed on intellectual vitality, relationship management, and knowledge of geographic markets. A cadre of well-educated and successful experts partner with clients to achieve objectives in a cost and time- effective manner. Our business is broadly based. Our real estate practice includes development, investment, and other commercial sale, lease, and management arrangements. Transactions include manufacturing, retailing, food processing, restaurant and hospitality, golf course, marinas, and other businesses.



SCAN THE QR
CODE TO VISIT
COMREALTY.NET!



**COMMERCIAL REALTY
ADVISORS, INC.**

222 West Main St. Hyannis, MA
508-862-9000 | comrealty.net

LICENSE #6295

