



81 Echo Road, Unit 4  
**MASHPEE MA**

**FOR SALE**

For Sale

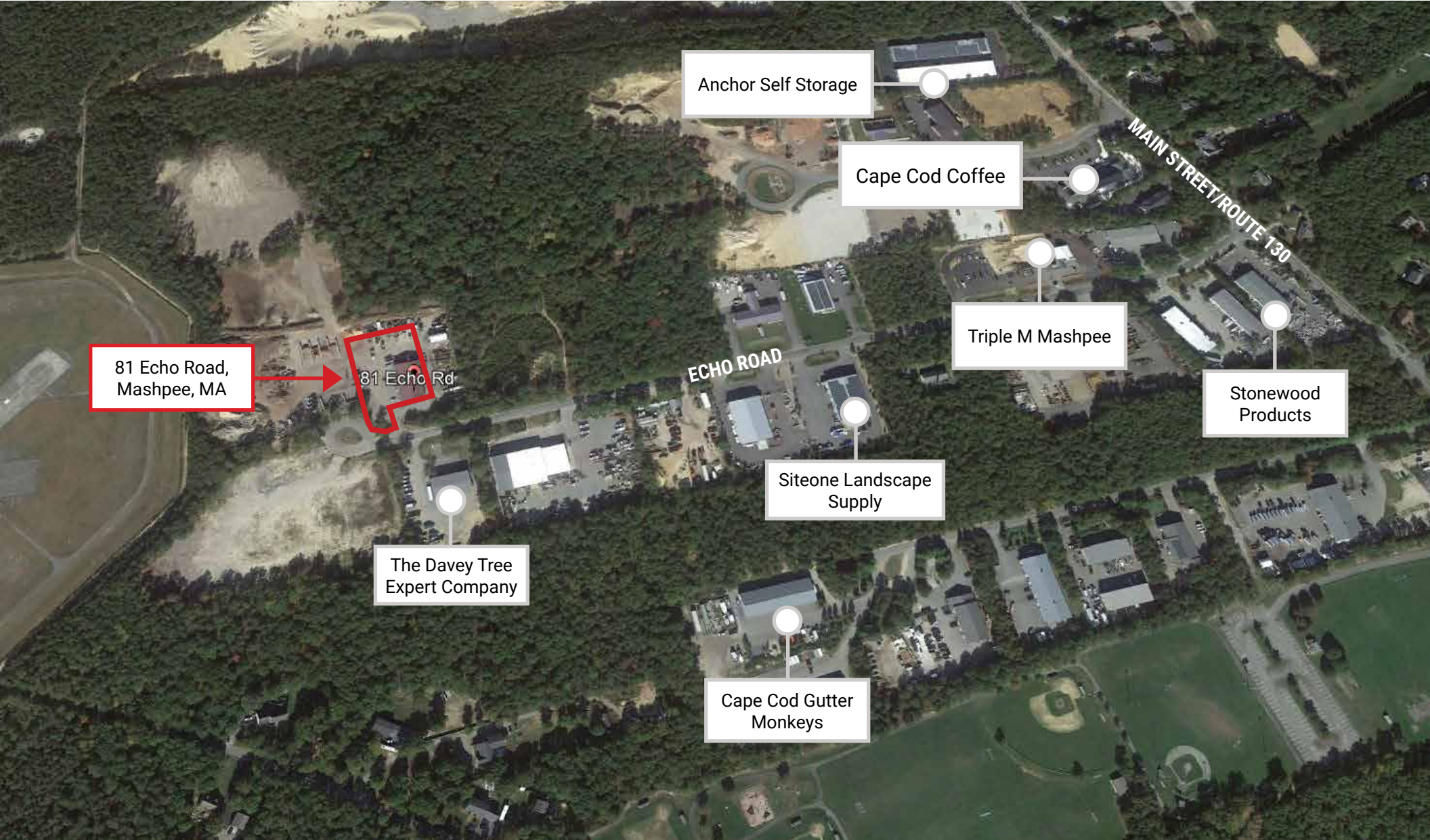
Area

**\$479,000**

**+/- 1,701 Sq. Ft.**

### Investment Highlights

- ✓ This property is a commercial/industrial condominium located just off of Route 130 (Main Street) in Mashpee, MA
- ✓ It's close to downtown Mashpee and near to Route 28, which connects it to the rest of Cape Cod
- ✓ Call today to schedule a showing!



81 Echo Road,  
Mashpee, MA

81 Echo Rd

Anchor Self Storage

Cape Cod Coffee

Triple M Mashpee

Stonewood  
Products

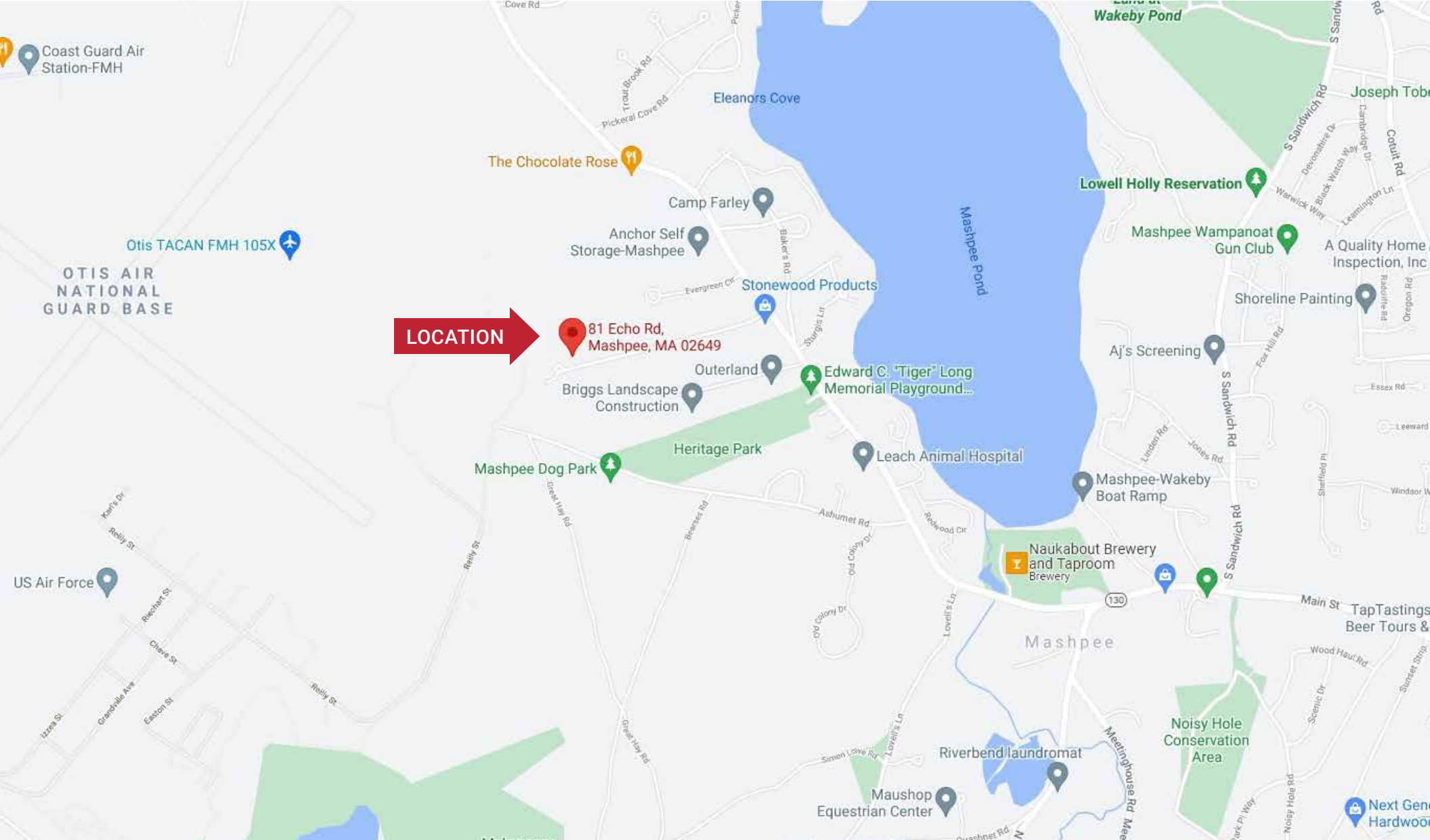
Siteone Landscape  
Supply

Cape Cod Gutter  
Monkeys

The Davey Tree  
Expert Company

MAIN STREET/ROUTE 130

ECHO ROAD



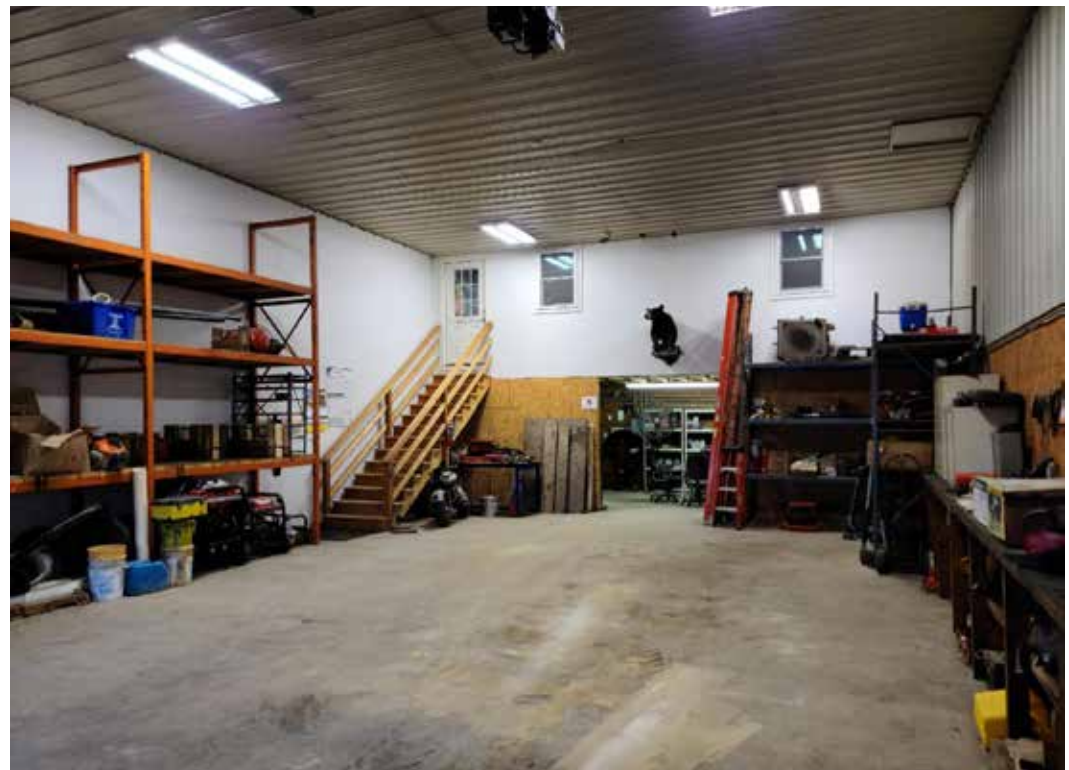
LOCATION

81 Echo Rd,  
Mashpee, MA 02649

# Property Specifications

## PROPERTY DETAILS

<b>Year Built Building 1</b>	2004
<b>Area</b>	+/- 1,701 Sq. Ft.
<b>Address</b>	81 Echo Rd, Unit 4, Mashpee, MA
<b>Style</b>	Condo-Warehouse
<b>Stories</b>	1
<b>Zoning</b>	Zoned I1 by the Town of Mashpee
<b>Map ID</b>	19-3-D
<b>Title</b>	Barnstable County Registry of Deeds: Book 33204, Page 142



# Area Demographics

## MASHPEE DEMOGRAPHICS FOR 2021

<b>Estimated Population</b>	15,060
<b>Estimated Households</b>	6,360
<b>Estimated Average Household Income</b>	\$77,019
<b>Estimated Total Businesses</b>	1,655

## FINANCIAL INFORMATION

<b>Price for Sale</b>	\$499,000
<b>Land Assessment</b>	\$0
<b>Detached</b>	\$4,300
<b>Building Assessment</b>	\$196,000
<b>Total Assessed Value</b>	\$200,300
<b>Condo Fee</b>	\$150/Month
<b>2022 Taxes</b>	\$1,951



# Property Map





## Commercial Realty Advisors' Disclaimer

This information has been secured from sources we believe to be reliable, but we make no representation or warranties, expressed or implied, as to the accuracy of the information contained herein. Commercial Realty Advisors, Inc. and the agent presenting this opportunity represent the Seller / Lessor, and are neither architects, engineers, inspectors, accountants nor attorneys, and therefore all buyers / tenants must consult with their own architects, engineers, inspectors, accountants or attorneys as to financial, zoning, lot line, handicapped accessibility, flood plain, mechanical, structural, or environmental concerns. Buyer must verify all information and bears all the risk for inaccuracies. Referenced square footage and acreage and sketched outlines are approximate, and this information package is subject to change.

License #6295



The logo for Commercial Realty Advisors features the word "Commercial" in a small, black, sans-serif font above the words "Realty Advisors" in a larger, black, serif font. A blue, curved line arches over the word "Realty".

Commercial  
Realty Advisors

**REAL ESTATE  
SERVICES**

**Kevin Pepe**  
President  
508-862-9000 ext 105  
[kpepe@comrealty.net](mailto:kpepe@comrealty.net)

**Commercial Realty Advisors, Inc.**  
222 West Main Street  
Hyannis, MA 02601  
<https://comrealty.net>