

Successful Fence Installation Business for Sale in Orleans, MA



FOR SALE!

Contact **Craig Campbell** at Commercial Realty Advisors at **508-862-9000 ext 126** and ccampbell@comrealty.net

Business Highlights

- This fencing company is well-known for high quality design, build and installation of fencing throughout the outer and lower Cape Cod
- It specializes in cedar fencing, arbors, trellises, shower enclosures, garden, pool and yard enclosures
- Additionally they design and install chain link and aluminum fencing
- This family-owned company has been operating for over 40 years
- The company has a great sales record for 2020 and through June of 2021

**For Sale:
\$400,000***

*This opportunity is offered at \$400,000 plus the inventory on hand at the time of the sale at cost.



Confidentiality & Disclaimer

The Offering Document was prepared by Commercial Realty Advisors, Inc., from and on information provided by the "Seller", by agents of the Seller and from other sources believed reliable. No guaranty, express or implied, is made as to the accuracy or completeness of this information and is subject to error, omission, change of price, change of description or condition or withdrawal without notice. Commercial Realty Advisors, Inc., has not independently audited or verified any information, financial result, legal description, sketch or plan. No projection of future income or the viability of this establishment has been guaranteed by the Seller or Commercial Realty Advisors, Inc. The recipient of this Offering Document acknowledges its responsibility to perform a due diligence review at its own cost prior to any acquisition of this Business and real estate.

Commercial Realty Advisors, Inc., and the agent presenting this opportunity, represent the Seller on an Exclusive basis. Commercial Realty Advisors, Inc., and other brokers or salespeople represent the Seller not the Buyer in the marketing, negotiation and sale of this Business and real estate, unless otherwise disclosed.

Commercial Realty Advisors, Inc. are neither architects, engineers, inspectors, accountants nor attorneys, and therefore all buyers / tenants must consult with their own architects, engineers, inspectors, accountants or attorneys as to financial, zoning, lot line, handicapped accessibility, flood plain, mechanical, structural, or environmental concerns.

This Offering Document is proprietary to the Seller and its related legal and beneficial owners and to Commercial Realty Advisors, Inc. This information is made available to you because you signed a Confidentiality Agreement for the purpose of conducting an analysis of the business opportunity represented herein prefatory to making an offer to purchase the aforementioned Business and real estate. Buyer must verify all information and bears all the risk for inaccuracies. Referenced square footage and acreage and sketched outlines are approximate, and this information package is subject to change.

Should you decline to make said offer, you agree to return promptly this Offering Document and any other information provided to you.

You acknowledge that you will treat as secret all information provided herein. You will not discuss, reproduce or in any way share information with any party including the Sellers, employees, agents, customers, creditors, suppliers or competitors of said Business and real estate unless prior written permission has been granted to you by Commercial Realty Advisors, Inc.

Outer Cape Fencing Company

Table of Contents

Confidentiality & Disclaimer	2
Table of Contents	3
Demographics	4
Business Summary	5
Assessed Value	Call for details
Location	6
Financials	Call for details
About Commercial Realty Advisors, Inc.	7



Demographics

As of the 2010 United States census, there were 215,888 people, 95,755 households, and 58,724 families residing in the county. The population density was 548.3 inhabitants per square mile (211.7/km²). There were 160,281 housing units at an average density of 407.1 per square mile (157.2/km²). The racial makeup of the county was 92.7% white, 1.9% black or African American, 1.1% Asian, 0.6% American Indian, 1.5% from other races, and 2.2% from two or more races. Those of Hispanic or Latino origin made up 2.2% of the population. In terms of ancestry, 27.0% were Irish, 19.2% were English, 11.4% were Italian, 11.4% were American, and 9.1% were German.

Of the 95,755 households, 22.2% had children under the age of 18 living with them, 48.3% were married couples living together, 9.6% had a female householder with no husband present, 38.7% were non-families, and 31.8% of all households were made up of individuals. The average household size was 2.21 and the average family size was 2.77. The median age was 49.9 years.

The median income for a household in the county was \$60,317 and the median income for a family was \$75,056. Males had a median income of \$53,480 versus \$41,990 for females. The per capita income for the county was \$35,246. About 5.0% of families and 7.2% of the population were below the poverty line, including 9.8% of those under age 18 and 5.6% of those age 65 or over.



Summary

Well-known for high quality design, build and installation of fencing throughout the outer and lower Cape Cod, this fencing company specializes in cedar fencing, arbors, trellises, shower enclosures, garden, pool and yard enclosures. Additionally they design and install chain link and aluminum fencing. This family-owned company has been operating for over 40 years.

The following equipment is included in the sales price of the business:

- 2014 Toyota Tundra - 140,000 miles
- 2017 Isuzu - 75,000 miles
- Bobcat MT55 with Auger, Forks and Bucket
- Bridgewood Table Saw
- Grizzly Shaper
- Grizzly Band Saw
- Boring Machine
- Dowler/Pointer
- Pointer Machine
- Drum Sander
- Small Compressor
- Large Compressor
- Sprayer and four guns
- Custom Building Bench
- 15 inch Chop Saw

The owner manages the day to day operation including sales and business development, bookkeeping/payroll, scheduling, preparing estimates. There are four full time employees that build, install and stain the fences and a part time summer employee that builds and installs the

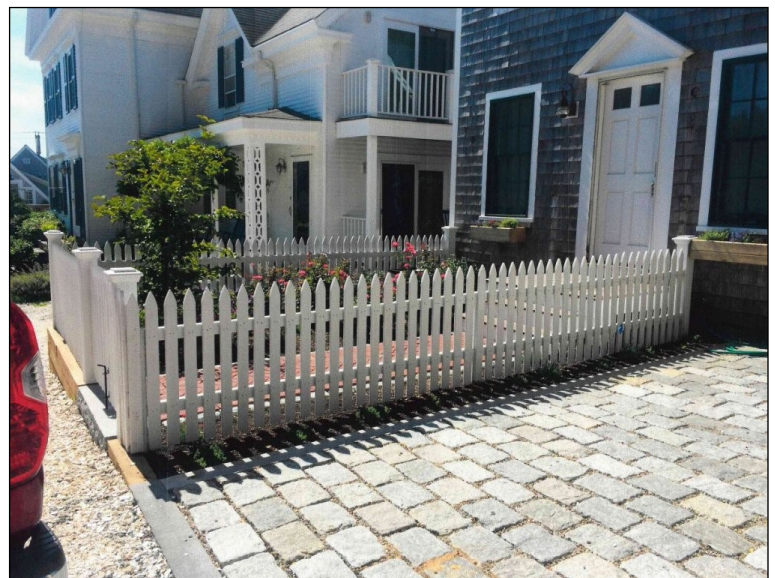
fences. They are paid between \$13 and \$40 per hour.

The current space where the business is located is not for sale or lease but the owner has approximately 852 Sq. Ft. of space that he will lease or sell to the buyer. Additionally, the seller is open to selling approximately 4,000 square feet of commercial space to the buyer of the business.

During the past three years the business has reported sales of an average of about \$800,000 and 2021 is tracking to be a banner year with sales of \$450,000 through June of 2021.

This business should qualify for SBA financing for a buyer/borrower with a good credit history.

Included with the sale of the business is equipment and tools, customer lists and records, marketing materials, phone number(s), trade name and goodwill. Owner orientation and transitional training is included. This opportunity is offered at \$400,000 plus the inventory on hand at the time of the sale at cost.



Outer Cape Fencing Company

Orleans, MA



About Commercial Realty Advisors, Inc.

Commercial Realty Advisors, Inc. specializes in commercial and industrial real estate, mergers, acquisitions, joint ventures, divestitures, and other business broker strategies. It is a commercial and real estate brokerage based in Hyannis, Massachusetts, specializing in middle-market transitions. The culture of our firm is that of an investment bank with a premium placed on intellectual vitality, relationship management and knowledge of geographic markets. A cadre of well educated and successful experts partner with clients to achieve objectives in a cost and time-effective manner.

Our business is broadly based. Our real estate practice includes development, investment and other commercial sale, lease and management arrangements. Transactions include manufacturing, retailing, food processing, restaurant and hospitality, golf course, marinas, and other businesses.

For more information about this outer Cape fencing company
or other business opportunities please contact:

Craig Campbell

Office: 508-862-9000, Ext. 126 | Fax: 508-862-9200 | ccampbell@comrealty.net

Commercial Realty Advisors, Inc. | 222 West Main Street | Hyannis, MA 02601