

**152 Cranberry Highway, Unit 2, Bourne, MA 02536**

Commercial  
**Realty Advisors**

**840+/- Sq. Ft. Industrial Condo Unit with 9' Overhead Door for Sale on Cranberry Highway in Bourne, MA**



Contact **Katie DeMoranville** at Commercial Realty Advisors at **508-862-9000 ext 123** and [kdemoranville@comrealty.net](mailto:kdemoranville@comrealty.net)

**Property Summary:**

This is an industrial unit in this commercial condo built in 2007 centrally located in Bourne in the Village of Sagamore. It has a 9' overhead door. A \$25,000 credit is offered at closing of sale for "Buyer Improvements!" Call today to schedule a showing!

**For Sale for \$225,000  
or for Lease at \$1,450/  
Month plus Utilities**

**Property Summary: 152 Cranberry Highway, Unit 2, Bourne,**

This is an industrial unit in this commercial condo building built in 2007 centrally located in Bourne in the Village of Sagamore. It has a 9' overhead door and easy access to the Mid-Cape Highway and Route 3.

The unit is 840+/- Sq. Ft. with 19 foot high ceilings. This is a must-see! Call today to schedule a showing!

Address	Parcel ID	Building Assessment	Total Assessment
152 Cranberry Hwy	18.0-29-2	\$141,800	\$141,800

**Title:** Barnstable County Registry of Deeds:  
Book 32243, Page 72

**Assessment 2021:** This property has a assessment of:  
\$141,800

**Taxes 2021:** \$1,585

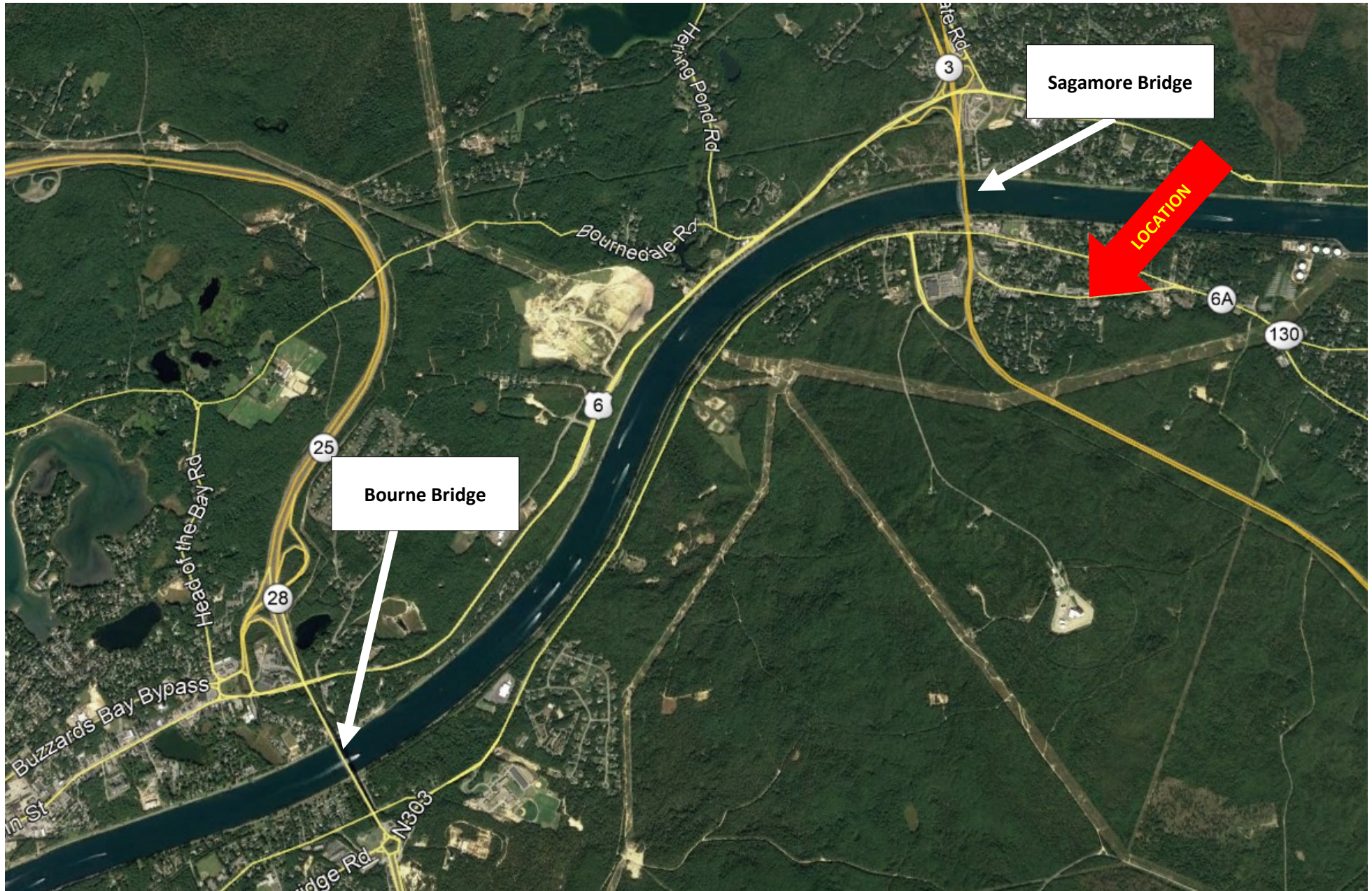




# 152 Cranberry Highway, Unit 2, Bourne, MA 02536

Property Location View

Commercial  
Realty Advisors





# 152 Cranberry Highway, Unit 2, Bourne, MA 02536

Property Aerial Map

Commercial  
Realty Advisors





**152 Cranberry Highway, Unit 2, Bourne, MA 02536**

Property Images

Commercial  
**Realty Advisors**



Commercial Realty Advisors | 222 West Main Street, Hyannis, MA 02601 | 508-862-9000 | [www.comrealty.net](http://www.comrealty.net)

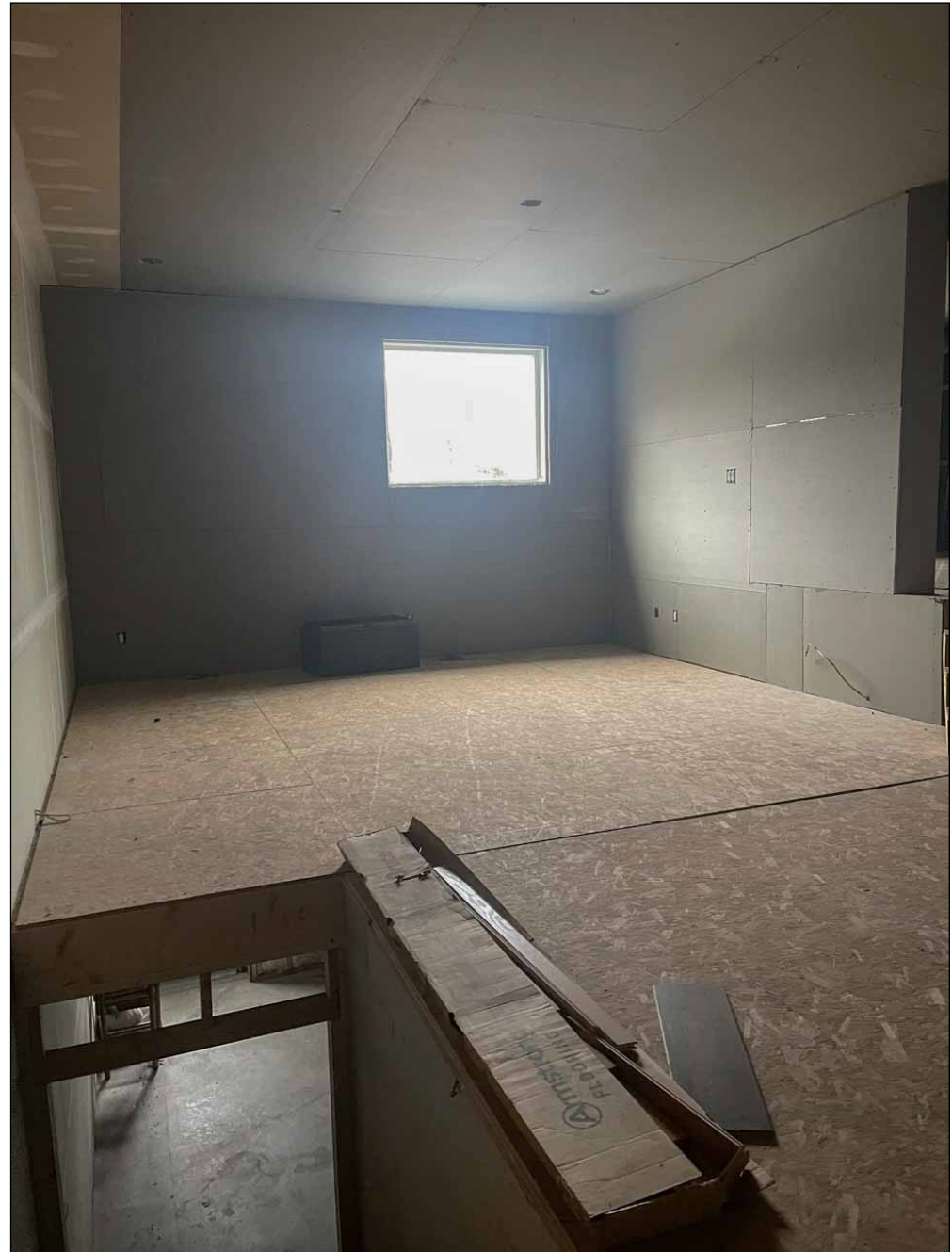
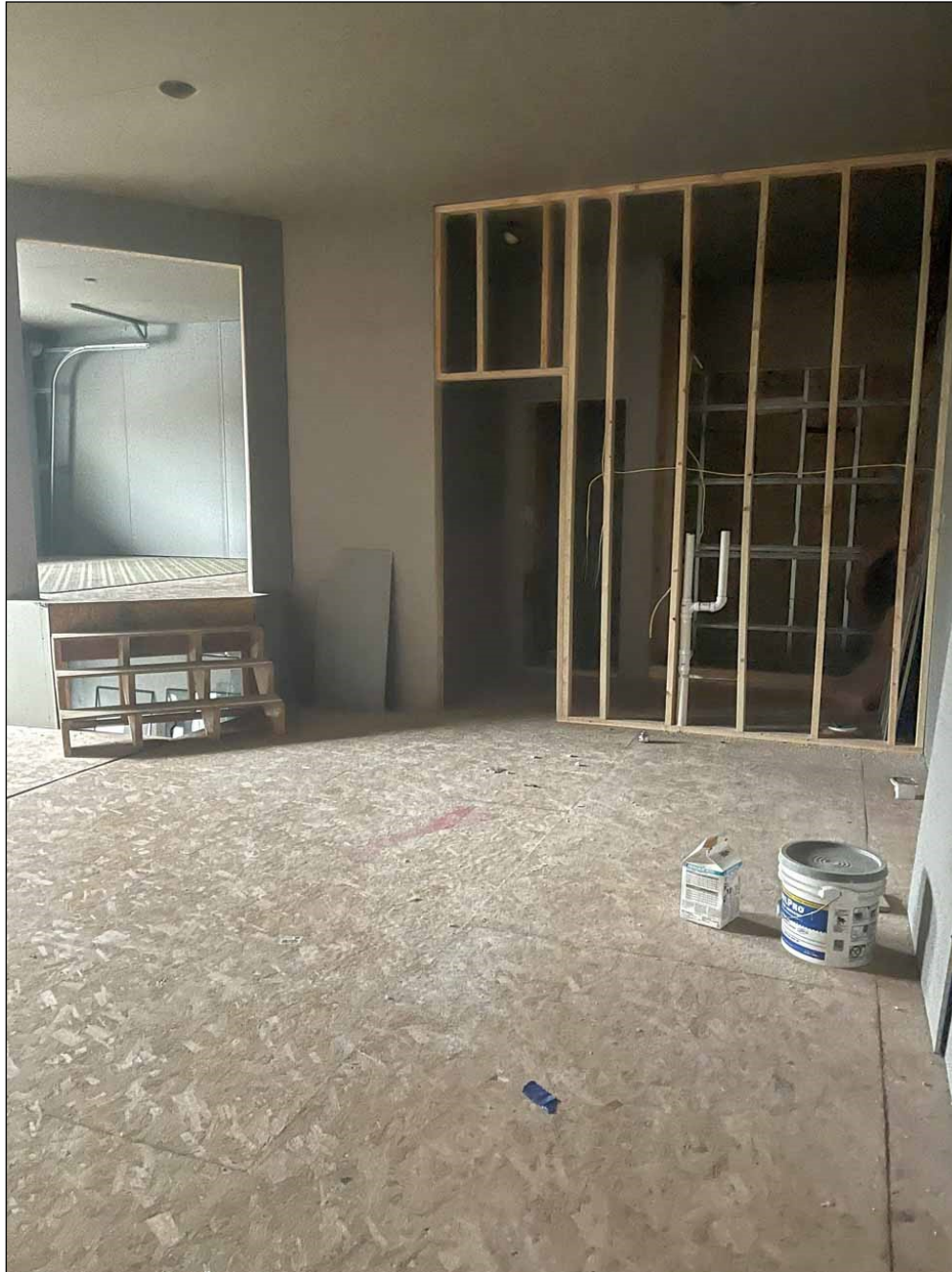




# 152 Cranberry Highway, Unit 2, Bourne, MA 02536

Property Images

Commercial  
Realty Advisors



# 152 Cranberry Highway, Unit 2, Bourne, MA 02536

Property Images

Commercial  
Realty Advisors



## Commercial Realty Advisors' Disclaimer

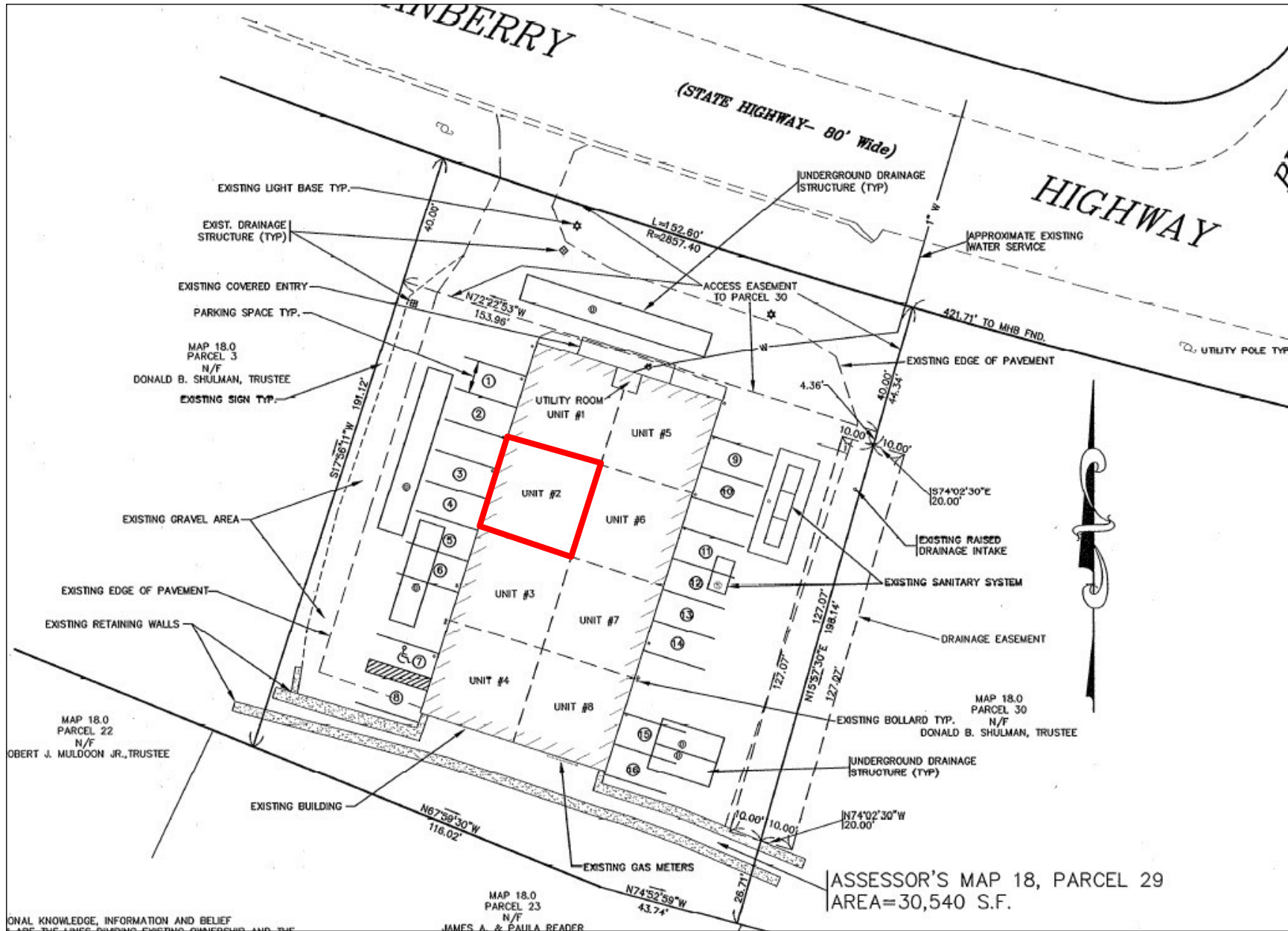
This information has been secured from sources we believe to be reliable, but we make no representation or warranties, expressed or implied, as to the accuracy of the information contained herein. Commercial Realty Advisors, Inc. and the agent presenting this opportunity represent the Seller / Lessor, and are neither architects, engineers, inspectors, accountants nor attorneys, and therefore all buyers / tenants must consult with their own architects, engineers, inspectors, accountants or attorneys as to financial, zoning, lot line, handicapped accessibility, flood plain, mechanical, structural, or environmental concerns. Buyer must verify all information and bears all the risk for inaccuracies. Referenced square footage and acreage and sketched outlines are approximate, and this information package is subject to change.



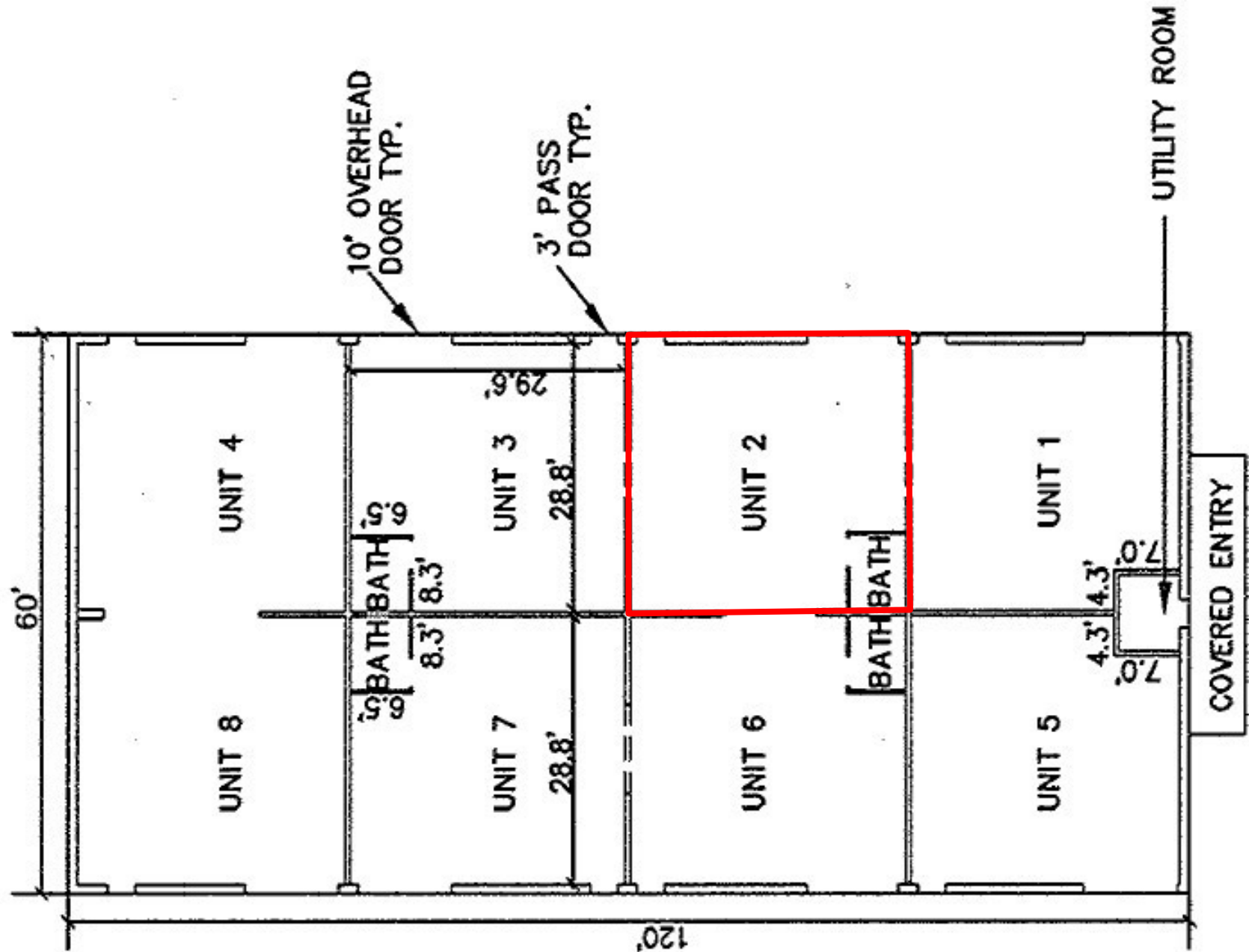
# 152 Cranberry Highway, Unit 2, Bourne, MA 02536

## Property Plan

Commercial  
Realty Advisors







BUILDING FLOOR PLAN  
SCALE 1"=20'