

## OFFERING MEMORANDUM

*Medical Office Space Available*

**FOR  
LEASE**

**KEVIN PEPE**

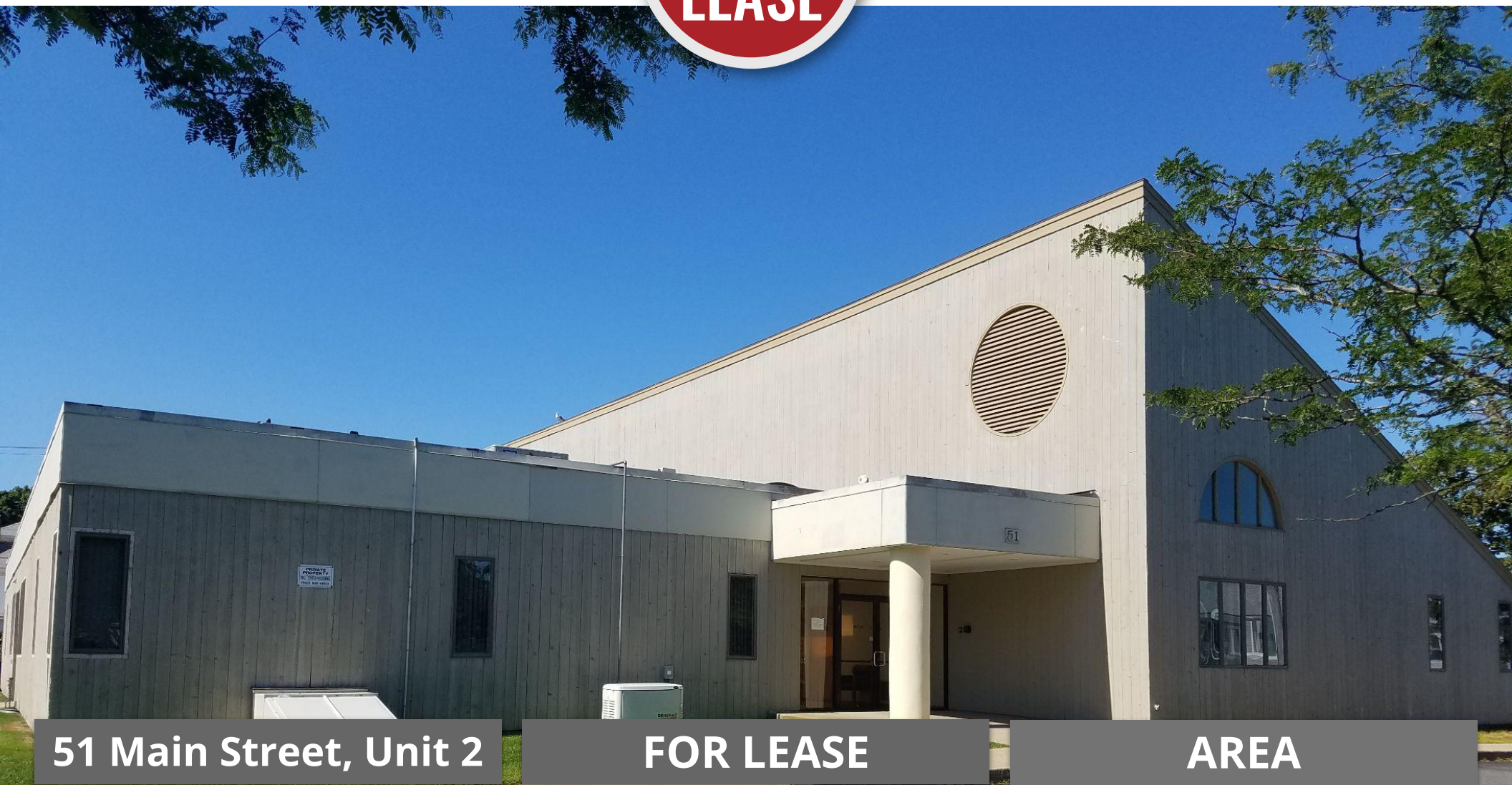
Office: 508-862-9000

Cell: 508-962-5022

KPepe@ComRealty.net

222 West Main Street, Hyannis, MA 02601

<https://comrealty.net/>



**51 Main Street, Unit 2**

**FOR LEASE**

**AREA**

**HYANNIS, MA**

**\$3,500/MONTH  
N-N-N**

**± 1,864 SF**



# PROPERTY LOCATION

51 Main Street, Unit 2, Hyannis, MA 02601

## Property Specifications

Year Built 1983

Gross Area 1,864

Stories 1

Style Office Building

Book/Page 11064/218

Use Code 3430

Parcel ID 342/033/00B

Zoning DV

Taxes 2024 \$4,684

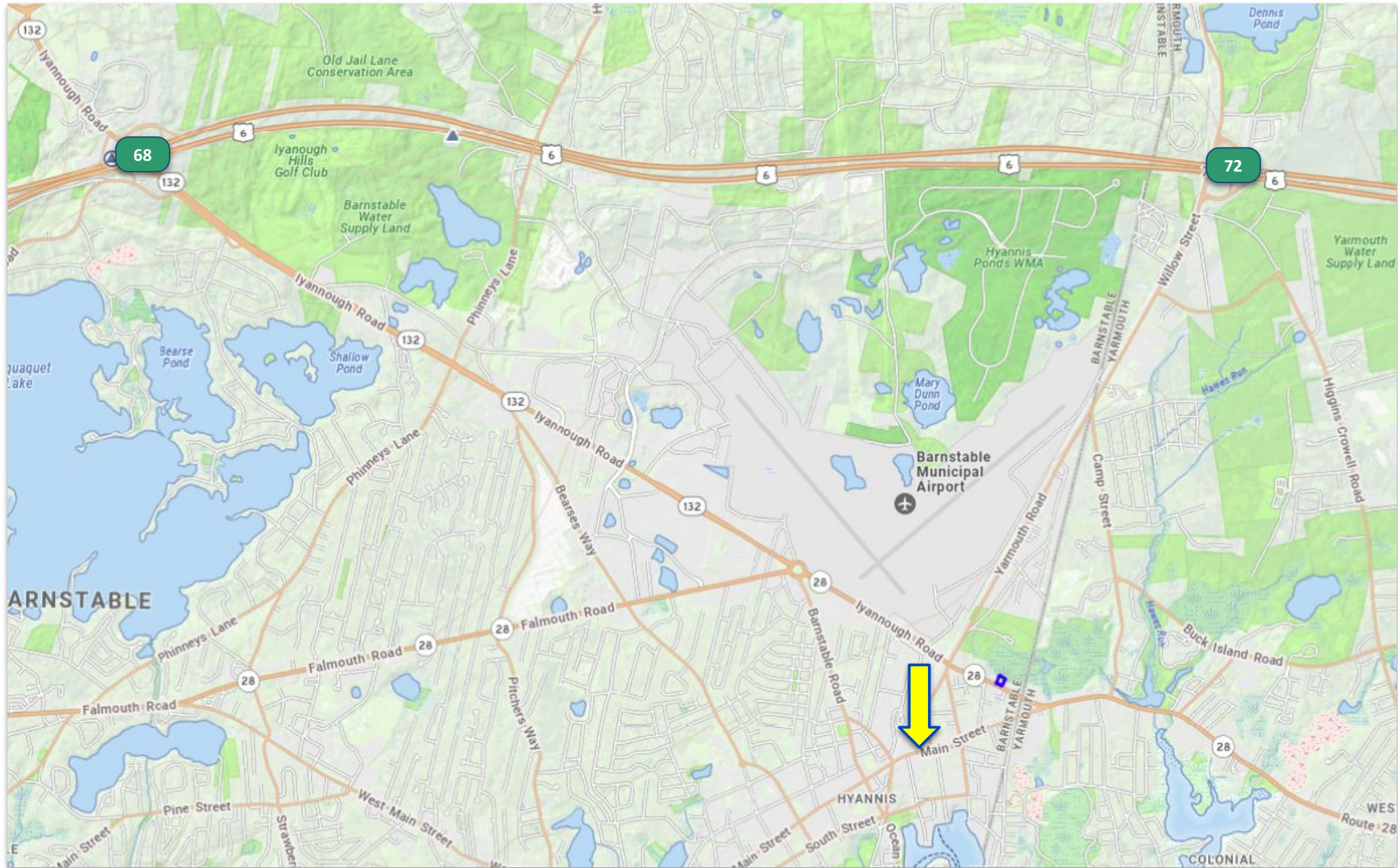
Condo Fee/Month \$810





# PROPERTY LOCATION

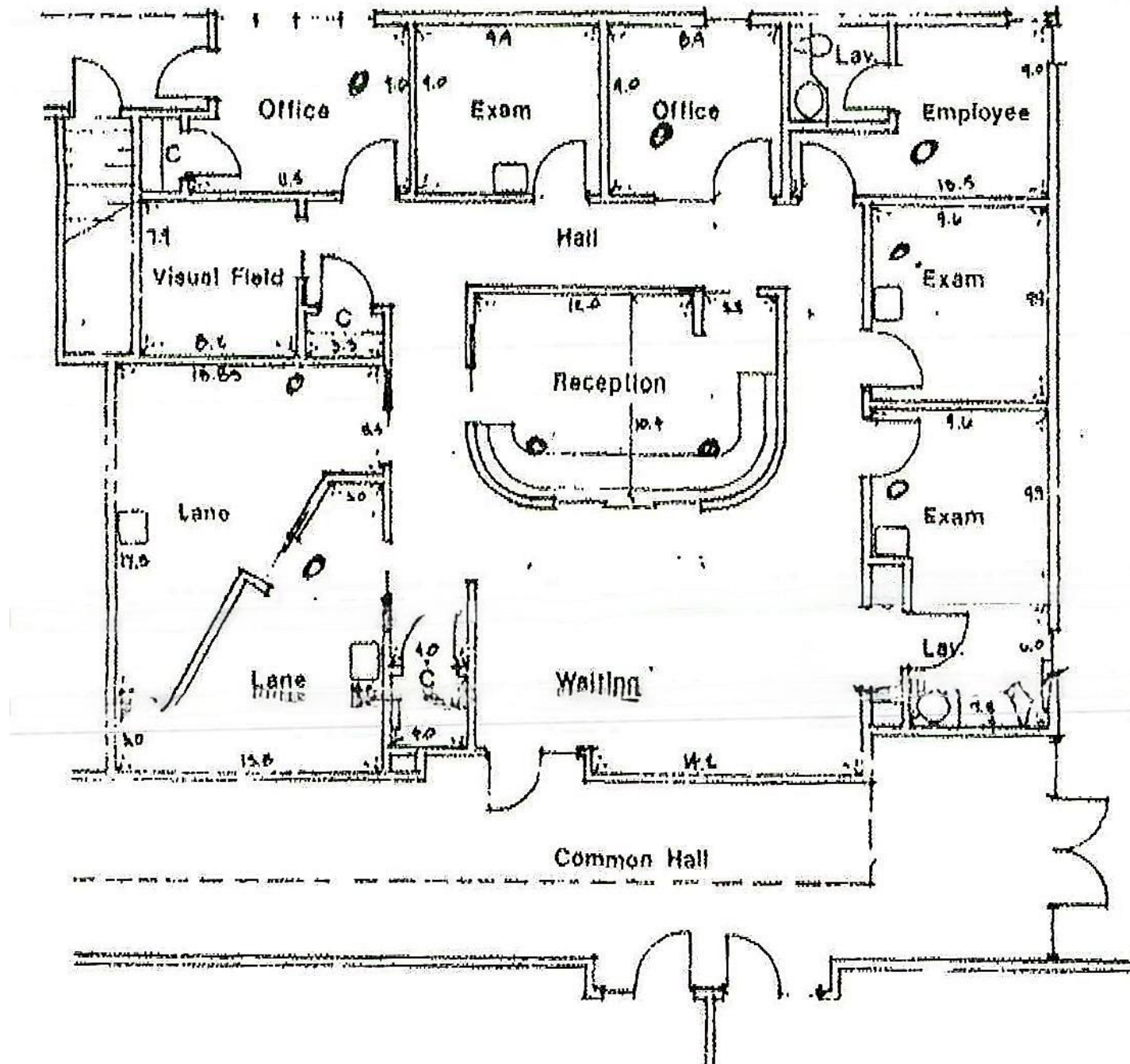
51 Main Street, Unit 2, Hyannis, MA 02601





# FLOOR PLANS

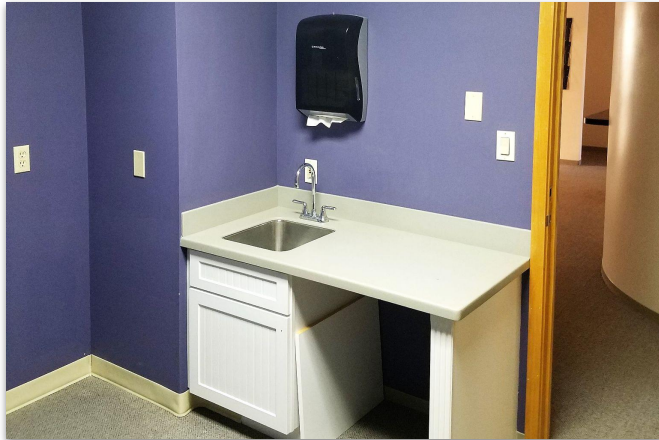
**51 Main Street, Unit 2, Hyannis, MA 02601**





# INTERIOR PICTURES

51 Main Street, Unit 2, Hyannis, MA 02601





# EXTERIOR PICTURES

51 Main Street, Unit 2, Hyannis, MA 02601



## Prime Medical Office Space Near Cape Cod Hospital – Ideal for Healthcare Professionals!

Position your practice for success in the heart of **Hyannis' Medical Services District**! This **1,864± SF medical office space** at **51 Main Street, Unit 2**, offers an exceptional opportunity for healthcare professionals seeking a **convenient, accessible, and well-equipped** location.

Just minutes from **Cape Cod Hospital**, this first-floor unit provides **multiple exam rooms, private offices, a welcoming reception area, and multiple on-site restrooms**—all designed to support **seamless patient care**. With **ample on-site parking and easy access**, this space ensures both staff and patients experience maximum convenience.

Surrounded by a network of **renowned medical and professional services**, this location is **perfectly suited for physicians, specialists, dentists, and other healthcare providers** looking to establish or expand their practice in a high-demand area.

Don't miss this opportunity to secure a **prime medical office space** in one of **Cape Cod's most sought-after healthcare hubs**. Contact us today for leasing details!

Commercial  
**Realty Advisors**

## Commercial Realty Advisors' Disclaimer

This information has been secured from sources we believe to be reliable, but we make no representation or warranties, expressed or implied, as to the accuracy of the information contained herein. Commercial Realty Advisors, Inc. and the agent presenting this opportunity represent the Seller / Lessor, and are neither architects, engineers, inspectors, accountants nor attorneys, and therefore all buyers / tenants must consult with their own architects, engineers, inspectors, accountants or attorneys as to financial, zoning, lot line, handicapped accessibility, flood plain, mechanical, structural, or environmental concerns. Buyer must verify all information and bears all the risk for inaccuracies. Referenced square footage and acreage and sketched outlines are approximate, and this information package is subject to change.

## ABOUT

Commercial Realty Advisors, Inc. specializes in commercial and industrial real estate, mergers, acquisitions, joint ventures, divestitures, and other business broker strategies. It is a commercial and real estate brokerage based in Hyannis, Massachusetts, specializing in middle-market transitions. The culture of our firm is that of an investment bank with a premium placed on intellectual vitality, relationship management, and knowledge of geographic markets. A cadre of well-educated and successful experts partner with clients to achieve objectives in a cost and time- effective manner. Our business is broadly based. Our real estate practice includes development, investment, and other commercial sale, lease, and management arrangements. Transactions include manufacturing, retailing, food processing, restaurant and hospitality, golf course, marinas, and other businesses.



SCAN THE QR  
CODE TO VISIT  
COMREALTY.NET!



**COMMERCIAL REALTY  
ADVISORS, INC.**

222 West Main St. Hyannis, MA  
508-862-9000 | comrealty.net

**LICENSE #6295**

