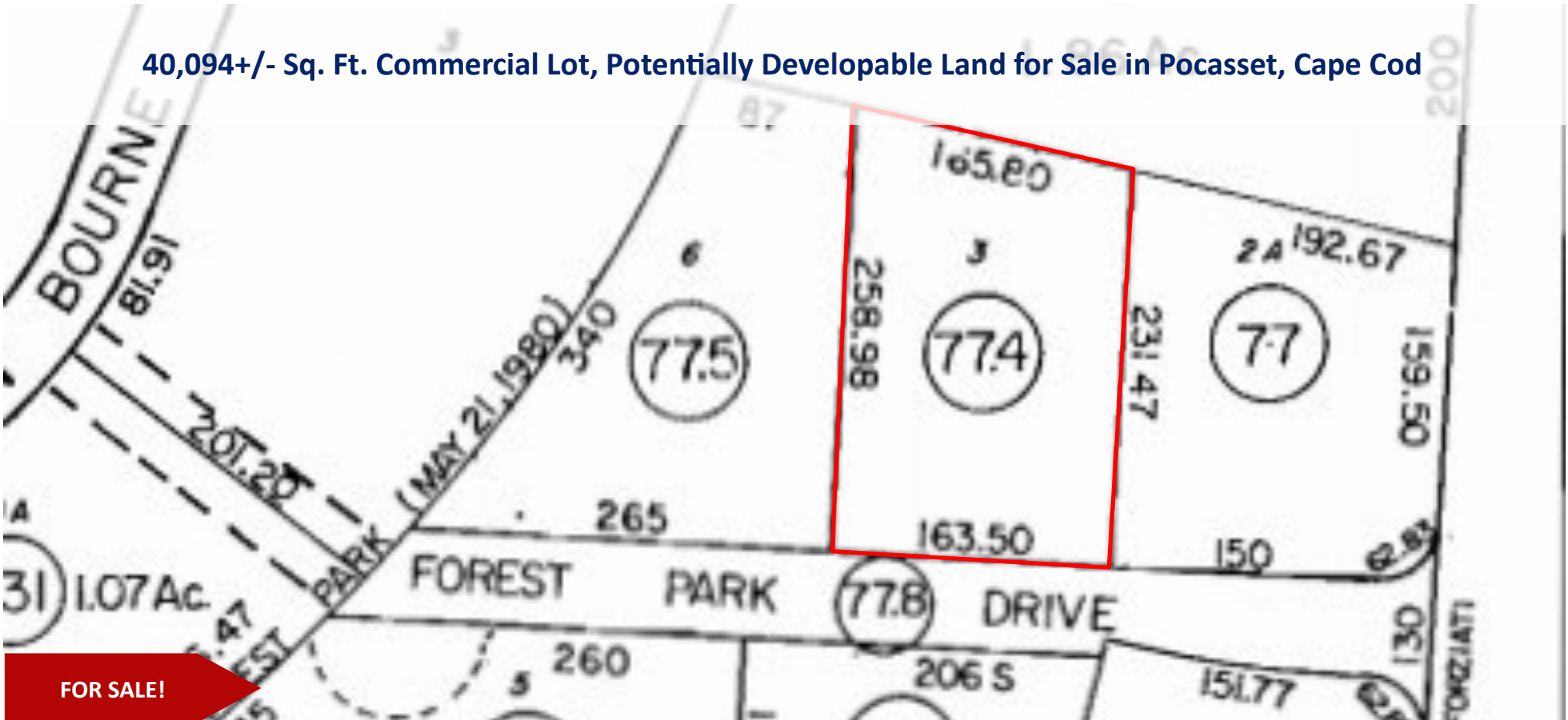


4 Forest Park Drive, Bourne, MA 02559

Commercial  
**Realty Advisors**

**40,094+/- Sq. Ft. Commercial Lot, Potentially Developable Land for Sale in Pocasset, Cape Cod**



**FOR SALE!**

Contact **Kevin Pepe** at Commercial Realty Advisors at 508-862-9000 ext 105 and [kpepe@comrealty.net](mailto:kpepe@comrealty.net)

### Property Summary:

- 4 Forest Park Drive is a potentially developable commercial lot located off a major North-South Cape Cod Highway with close proximity to Bourne Bridge and easy access to US Routes 195, 495, 3 and 6
- This lot is 40,094+/- Sq. Ft. and potentially buildable
- Access to Forest Park Drive between 568 & 570 MacArthur Blvd

**For Sale at  
\$399,000**

## 4 Forest Park Drive, Bourne, MA 02559

### Property Location Map

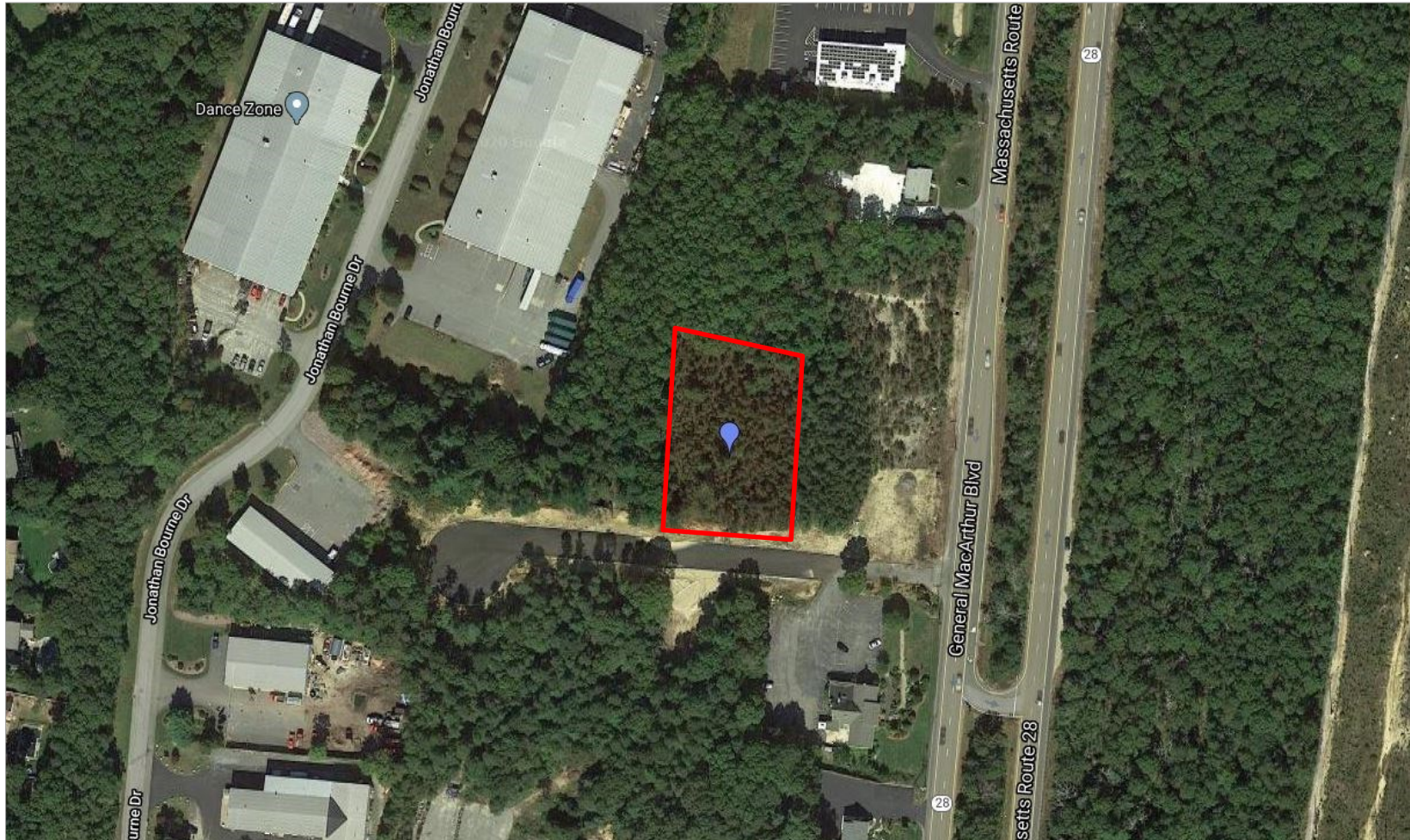
Commercial  
**Realty Advisors**





## 4 Forest Park Drive, Bourne, MA 02559

Property View



### Commercial Realty Advisors' Disclaimer

This information has been secured from sources we believe to be reliable, but we make no representation or warranties, expressed or implied, as to the accuracy of the information contained herein. Commercial Realty Advisors, Inc. and the agent presenting this opportunity represent the Seller / Lessor, and are neither architects, engineers, inspectors, accountants nor attorneys, and therefore all buyers / tenants must consult with their own architects, engineers, inspectors, accountants or attorneys as to financial, zoning, lot line, handicapped accessibility, flood plain, mechanical, structural, or environmental concerns. Buyer must verify all information and bears all the risk for inaccuracies. Referenced square footage and acreage and sketched outlines are approximate, and this information package is subject to change.

**Property Summary:**

4 Forest Park Drive is a potentially developable commercial lot located off a major North-South Cape Cod Highway with close proximity to Bourne Bridge and easy access to US Routes 195, 495, 3 and 6.

- This lot is 40,094+/- Sq. Ft. and potentially buildable
- Access to Forest Park Drive between 568 & 570 MacArthur Blvd
- Adjacent Lot (6 Forest Park Drive) is also available for sale

**Title:** Barnstable County Registry of Deeds: Book 30277, Page 31

**Zoning:** B2 (Business 2) by the Town of Bourne

**Parcel ID:** 39.0-77-4

**2021 Assessed Value:** \$321,600

**2021 Taxes:** \$3,594





