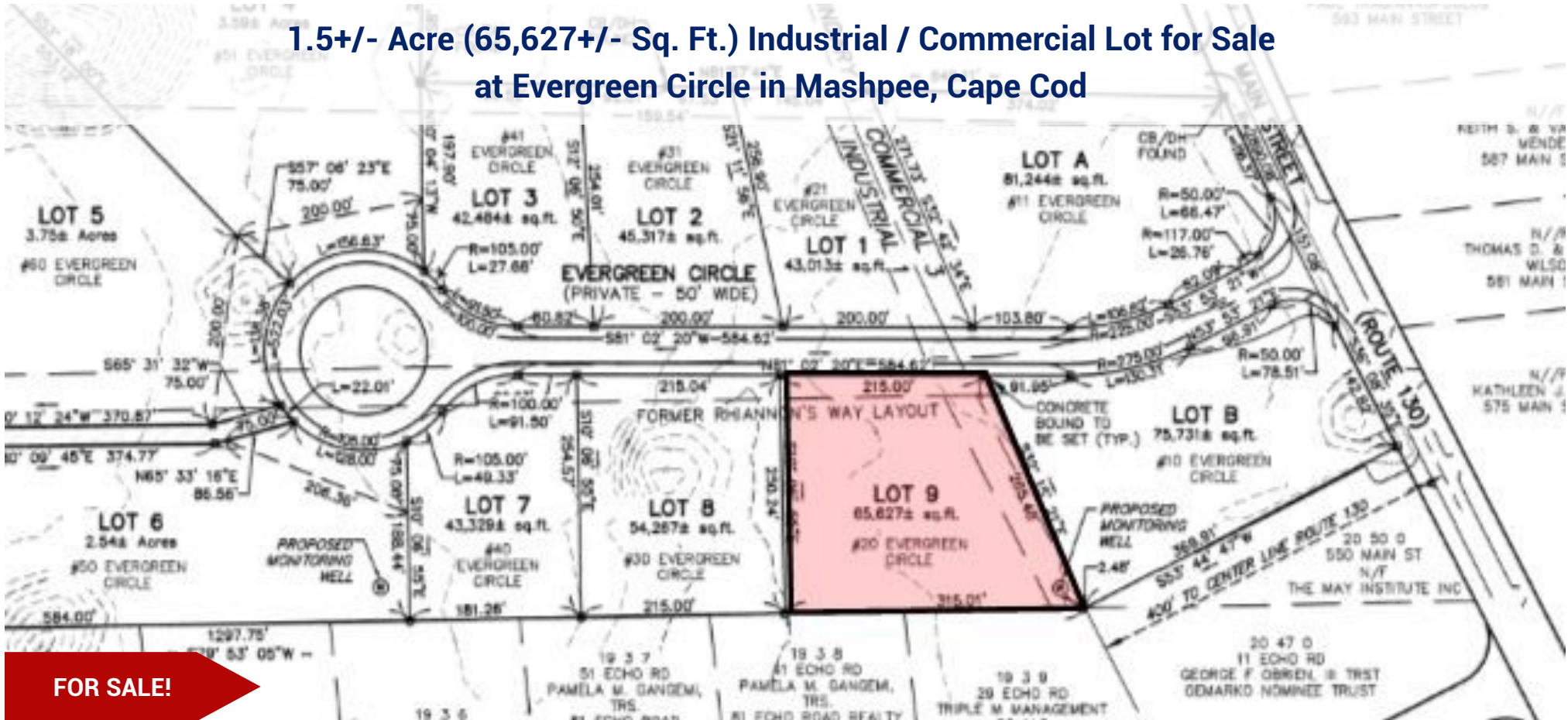


1.5+/- Acre (65,627+/- Sq. Ft.) Industrial / Commercial Lot for Sale
at Evergreen Circle in Mashpee, Cape Cod



FOR SALE!

Contact Kevin Pepe at Commercial Realty Advisors at 508-862-9000 ext 105 and kpepe@comrealty.net

Property Summary:

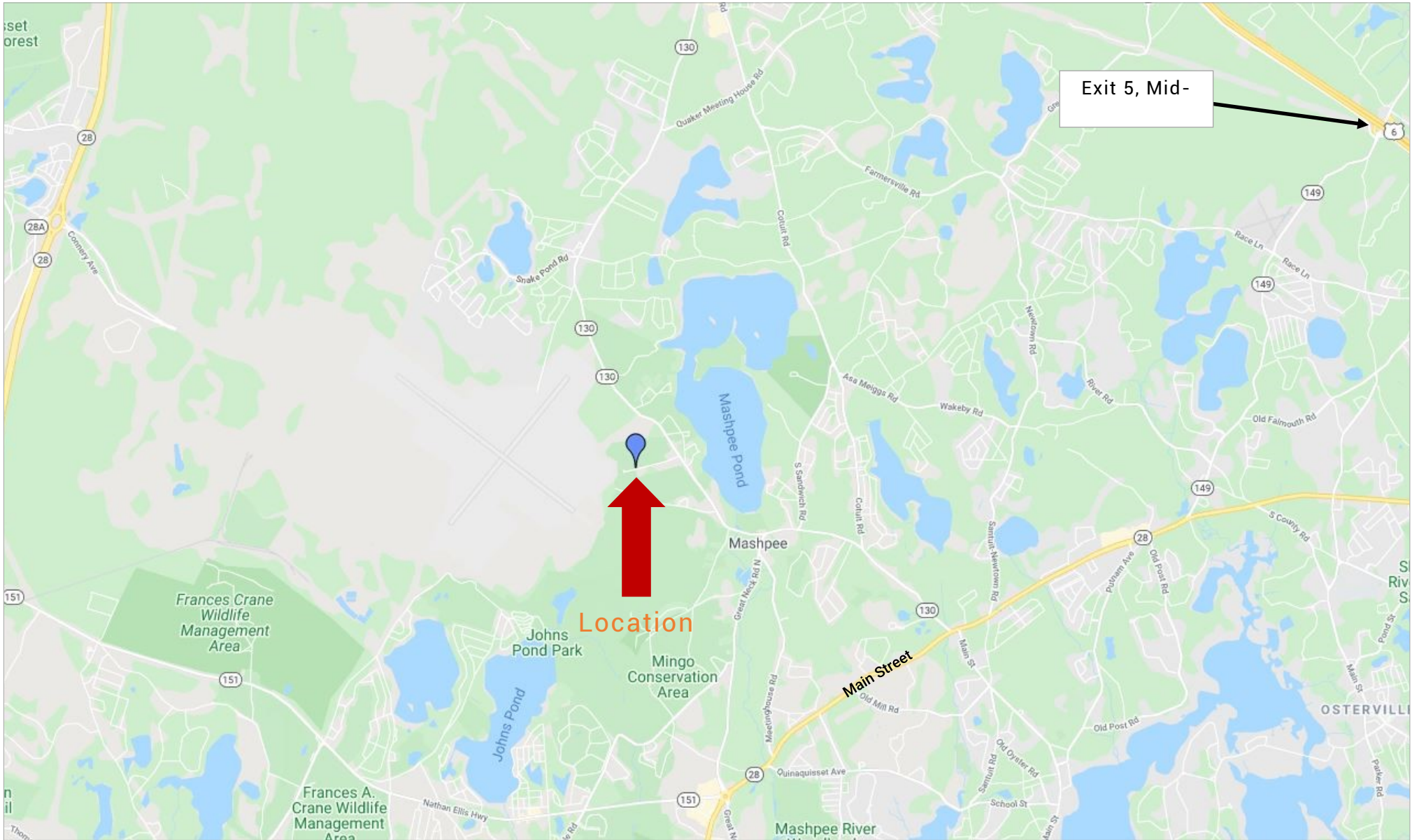
20 Evergreen Circle (Lot 9) is 65,627+/- Sq. Ft. (1.5 ± acres) and is for sale at \$599,000. Evergreen Circle, Mashpee is accessible by all major road ways servicing Barnstable County, such as Route 6, Route 28 and (frontage) on Route 130. Both lots are zoned Industrial 1 by the Town of Mashpee (See Pages 28-41 in Mashpee Zoning Bylaws).

**For Sale at
\$599,000**



20 Evergreen Circle, Mashpee, MA

Property Location Map



20 Evergreen Circle, Mashpee, MA

Property Summary:

20 Evergreen Circle (Lot 9):

65,627+/- Sq. Ft. (1.5+/- acres). For Sale at \$599,000.

Evergreen Circle:

Evergreen Circle, Mashpee is accessible by all major road ways servicing Barnstable County, such as Route 6, Route 28 and (frontage) on Route 130.

Zoning:

20 Evergreen Circle and the adjacent lot 30 Evergreen Circle (Lot 9) are zoned Industrial 1 by the Town of Mashpee (See Pages 28-41 in Mashpee Zoning Bylaws).

