

568 MacArthur Boulevard, Bourne, MA 02532

Commercial  
**Realty Advisors**

**40,599+/- Sq. Ft. Potentially Developable Commercial Lot for Sale  
on MacArthur Boulevard in Bourne, Cape Cod**



**FOR SALE!**

Contact **Kevin Pepe** at Commercial Realty Advisors at 508-862-9000 ext 105 and [kpepe@comrealty.net](mailto:kpepe@comrealty.net)

**Property Summary:**

- 568 MacArthur Blvd is a potentially developable commercial lot located on a major North-South Cape Cod Highway with close proximity to Bourne Bridge and easy access to US Routes 195, 495, 3 and 6
- The traffic count (2014 AA DT) is 33,800
- This lot is 40,599+/- Sq. Ft. and potentially buildable
- Frontage on MacArthur Boulevard

**For Sale:**  
**\$550,000**

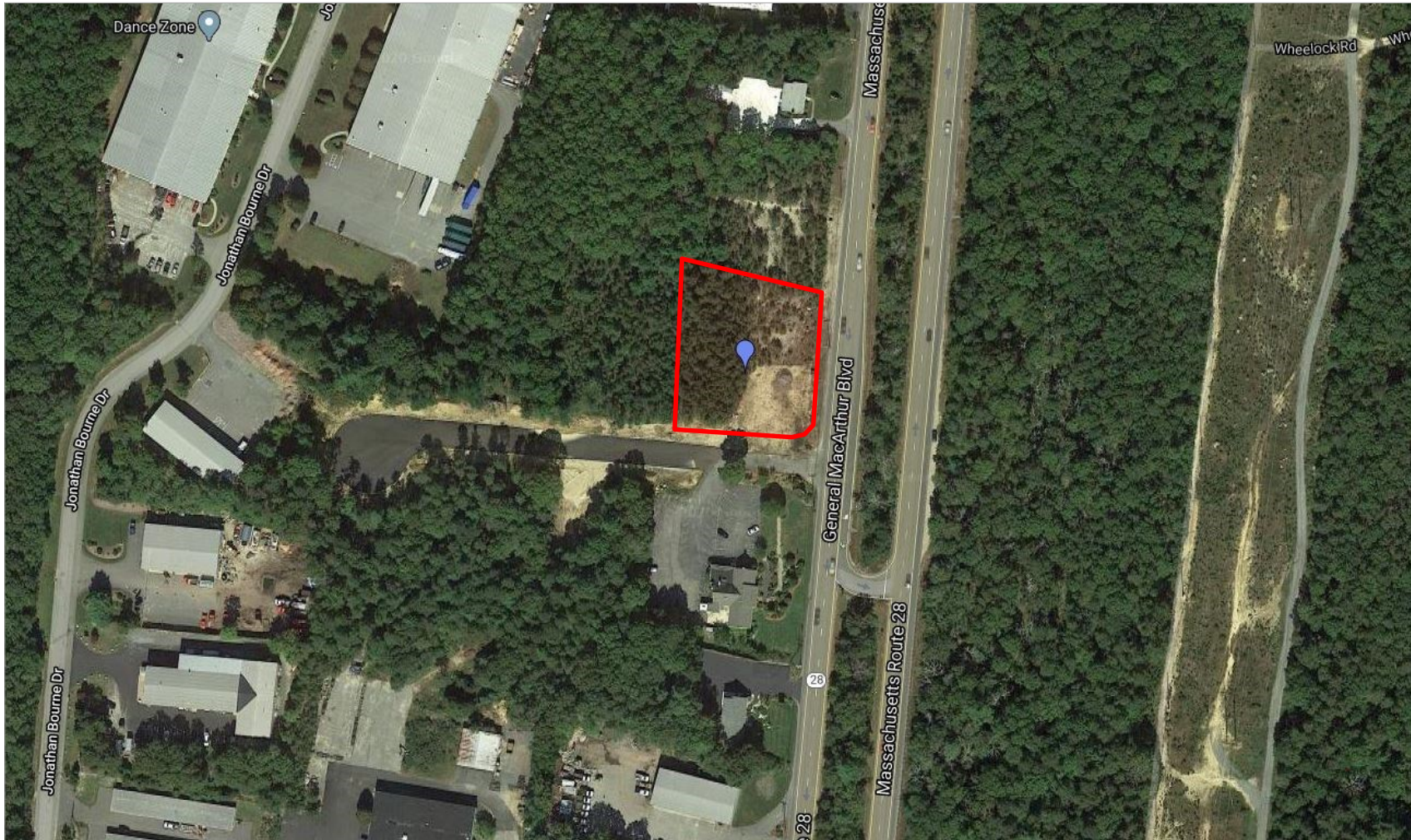
568 MacArthur Boulevard, Bourne, MA 02532  
Property Map





568 MacArthur Boulevard, Bourne, MA 02532

Property Aerial View



### Commercial Realty Advisors' Disclaimer

This information has been secured from sources we believe to be reliable, but we make no representation or warranties, expressed or implied, as to the accuracy of the information contained herein. Commercial Realty Advisors, Inc. and the agent presenting this opportunity represent the Seller / Lessor, and are neither architects, engineers, inspectors, accountants nor attorneys, and therefore all buyers / tenants must consult with their own architects, engineers, inspectors, accountants or attorneys as to financial, zoning, lot line, handicapped accessibility, flood plain, mechanical, structural, or environmental concerns. Buyer must verify all information and bears all the risk for inaccuracies. Referenced square footage and acreage and sketched outlines are approximate, and this information package is subject to change.



## 568 MacArthur Boulevard, Bourne, MA 02532

### Property Summary:

568 MacArthur Blvd is a potentially developable commercial lot located on a major North-South Cape Cod Highway with close proximity to Bourne Bridge and easy access to US Routes 195, 495, 3 and 6. The traffic count (2014 AA DT) is 33,800. This lot is 40,599+/- Sq. Ft. and potentially buildable. Frontage on MacArthur Boulevard.

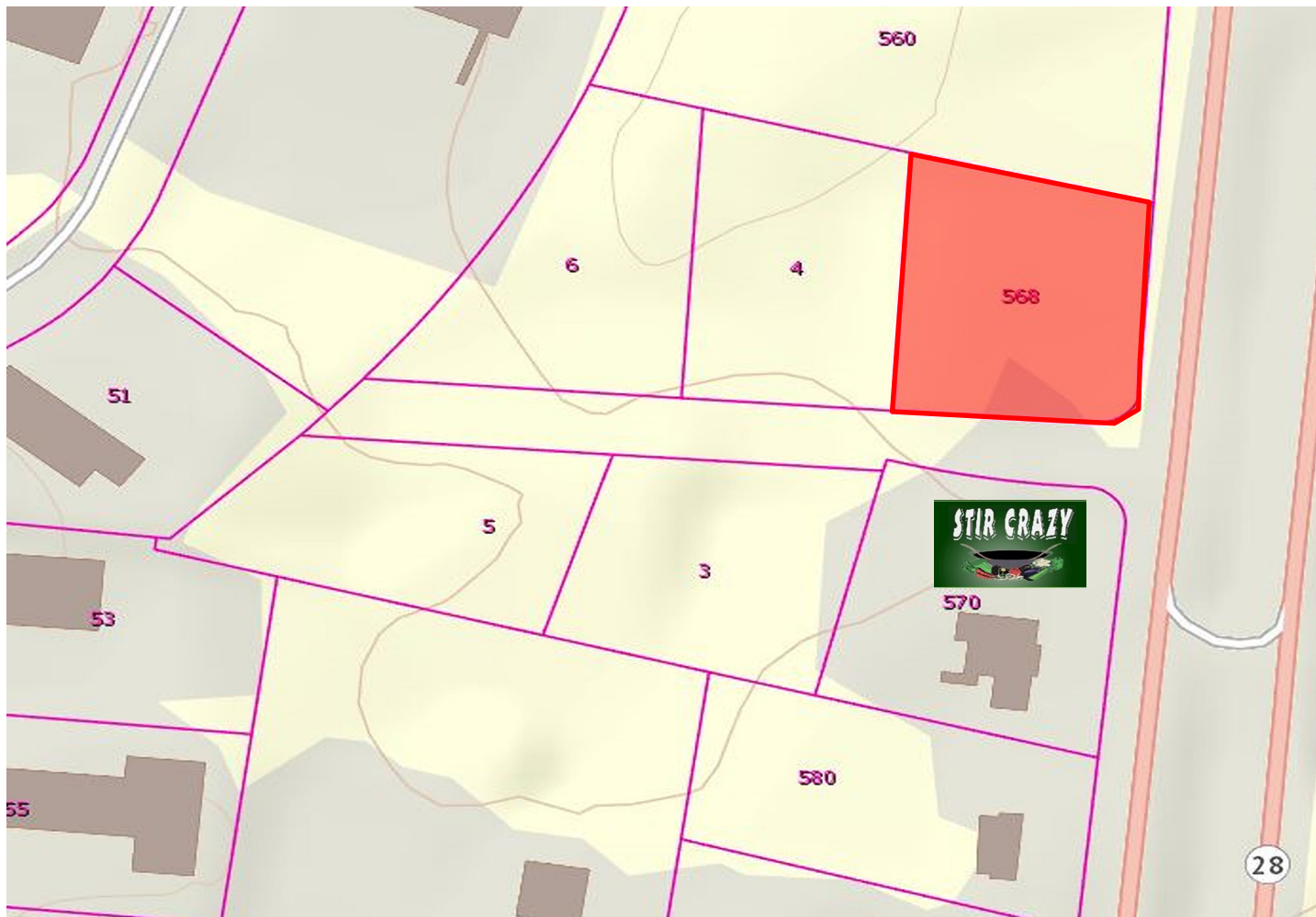
Adjacent Lot (4 Forest Park Drive) is also available for sale.

**Title:** Barnstable County Registry of Deeds: Book 30277, Page 31

**Zoning:** B2 (Business 2) by the Town of Bourne

39.0-77-0

**Parcel ID:**



568 MacArthur Boulevard, Bourne, MA 02532

Property Plan

Commercial  
Realty Advisors



### Commercial Realty Advisors' Disclaimer

This information has been secured from sources we believe to be reliable, but we make no representation or warranties, expressed or implied, as to the accuracy of the information contained herein. Commercial Realty Advisors, Inc. and the agent presenting this opportunity represent the Seller / Lessor, and are neither architects, engineers, inspectors, accountants nor attorneys, and therefore all buyers / tenants must consult with their own architects, engineers, inspectors, accountants or attorneys as to financial, zoning, lot line, handicapped accessibility, flood plain, mechanical, structural, or environmental concerns. Buyer must verify all information and bears all the risk for inaccuracies. Referenced square