

32 Commercial Street, South Yarmouth, MA 02664

Commercial
Realty Advisors

**500—6,000+/- Sq. Ft. Subdividable Professional Office Space Available
for Lease in South Yarmouth, Cape Cod**



FOR LEASE!

Contact **Brad Kuhrtz** at Commercial Realty Advisors at **508-862-9000 ext 118** and bkuhrtz@comrealty.net

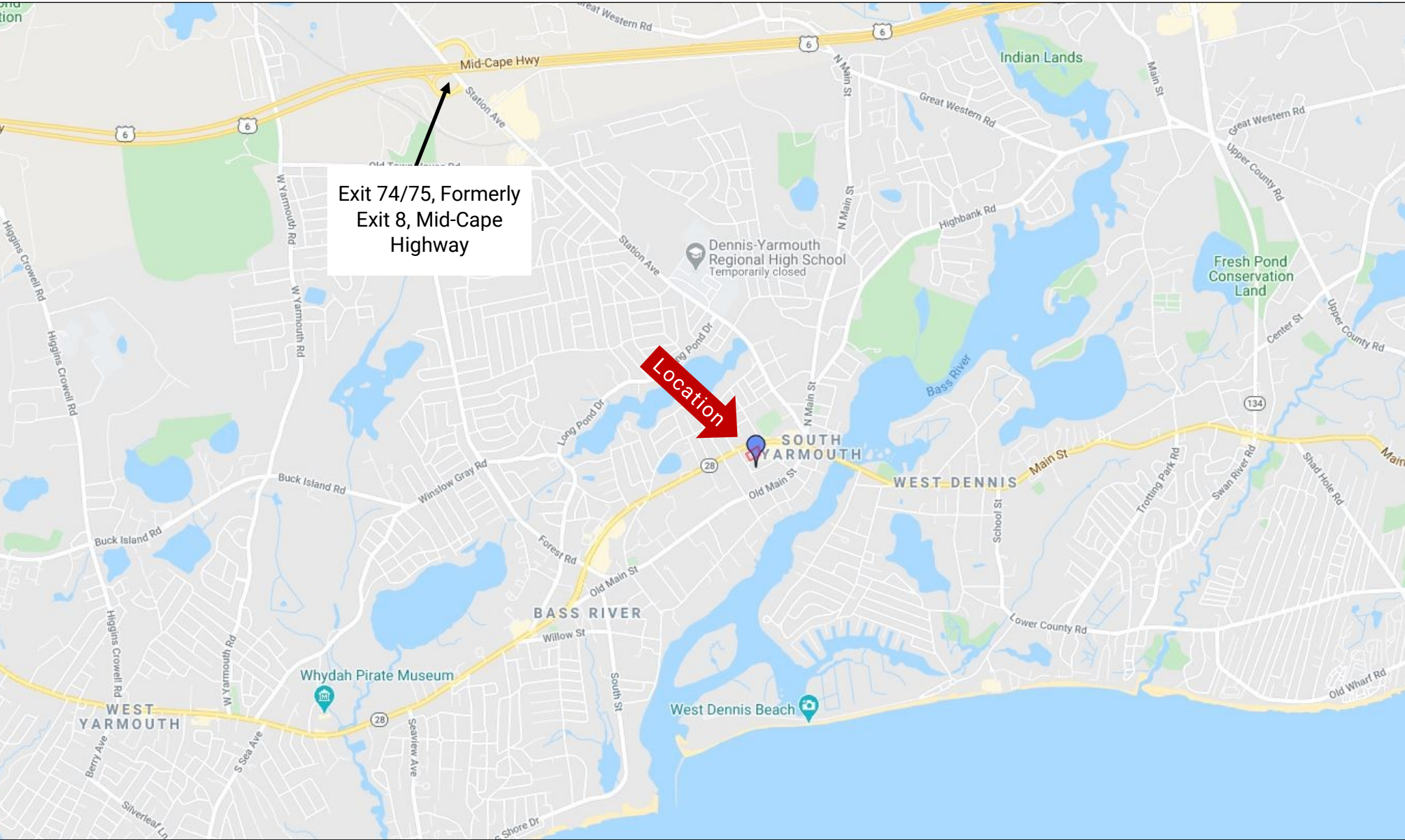
Property Summary:

- For lease
- Will subdivide
- Single room offices are available
- Ideal for start-ups and sole proprietorships

**For Lease:
\$10—\$11/Sq. Ft.**

32 Commercial Street, South Yarmouth, MA 02664

Property Location Map



32 Commercial Street, South Yarmouth, MA 02664

Property Aerial View



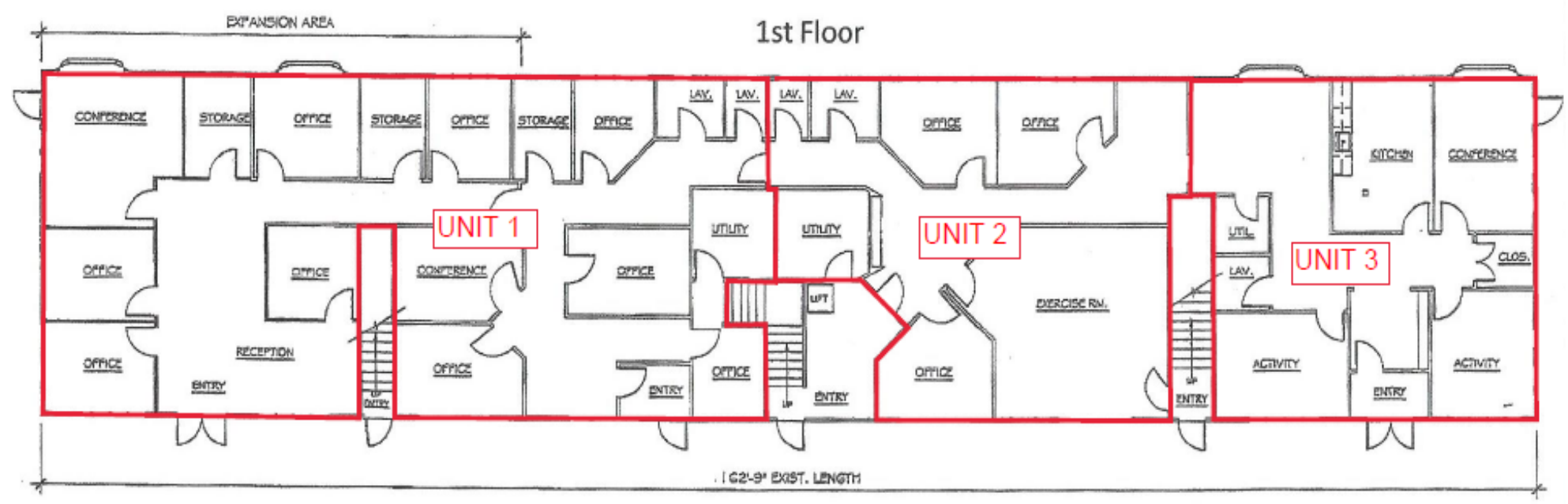
Commercial Realty Advisors' Disclaimer

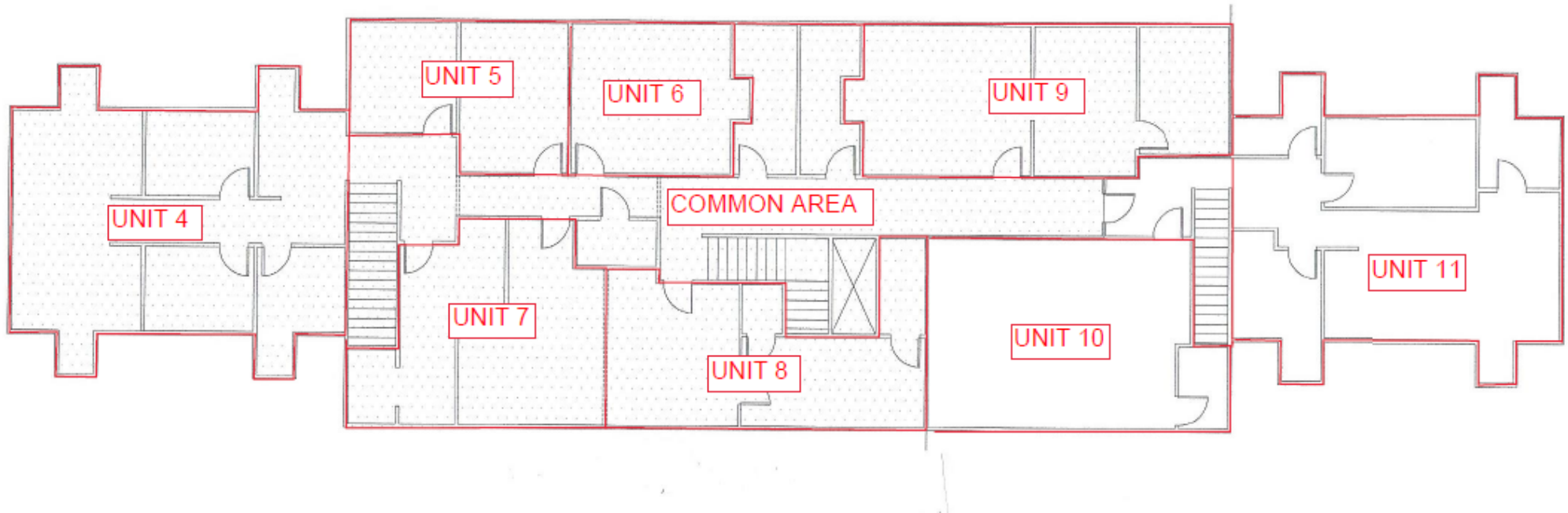
This information has been secured from sources we believe to be reliable, but we make no representation or warranties, expressed or implied, as to the accuracy of the information contained herein. Commercial Realty Advisors, Inc. and the agent presenting this opportunity represent the Seller / Lessor, and are neither architects, engineers, inspectors, accountants nor attorneys, and therefore all buyers / tenants must consult with their own architects, engineers, inspectors, accountants or attorneys as to financial, zoning, lot line, handicapped accessibility, flood plain, mechanical, structural, or environmental concerns. Buyer must verify all information and bears all the risk for inaccuracies. Referenced square footage and acreage and sketched outlines are approximate, and this information package is subject to change.

Property Summary

- For lease
- Will subdivide
- Single room offices are available
- Ideal for start-ups and sole proprietorships







Commercial Realty Advisors' Disclaimer

This information has been secured from sources we believe to be reliable, but we make no representation or warranties, expressed or implied, as to the accuracy of the information contained herein. Commercial Realty Advisors, Inc. and the agent presenting this opportunity represent the Seller / Lessor, and are neither architects, engineers, inspectors, accountants nor attorneys, and therefore all buyers / tenants must consult with their own architects, engineers, inspectors, accountants or attorneys as to financial, zoning, lot line, handicapped accessibility, flood plain, mechanical, structural, or environmental concerns. Buyer must verify all information and bears all the risk for inaccuracies. Referenced square footage and acreage and sketched outlines are approximate, and this information package is subject to change.