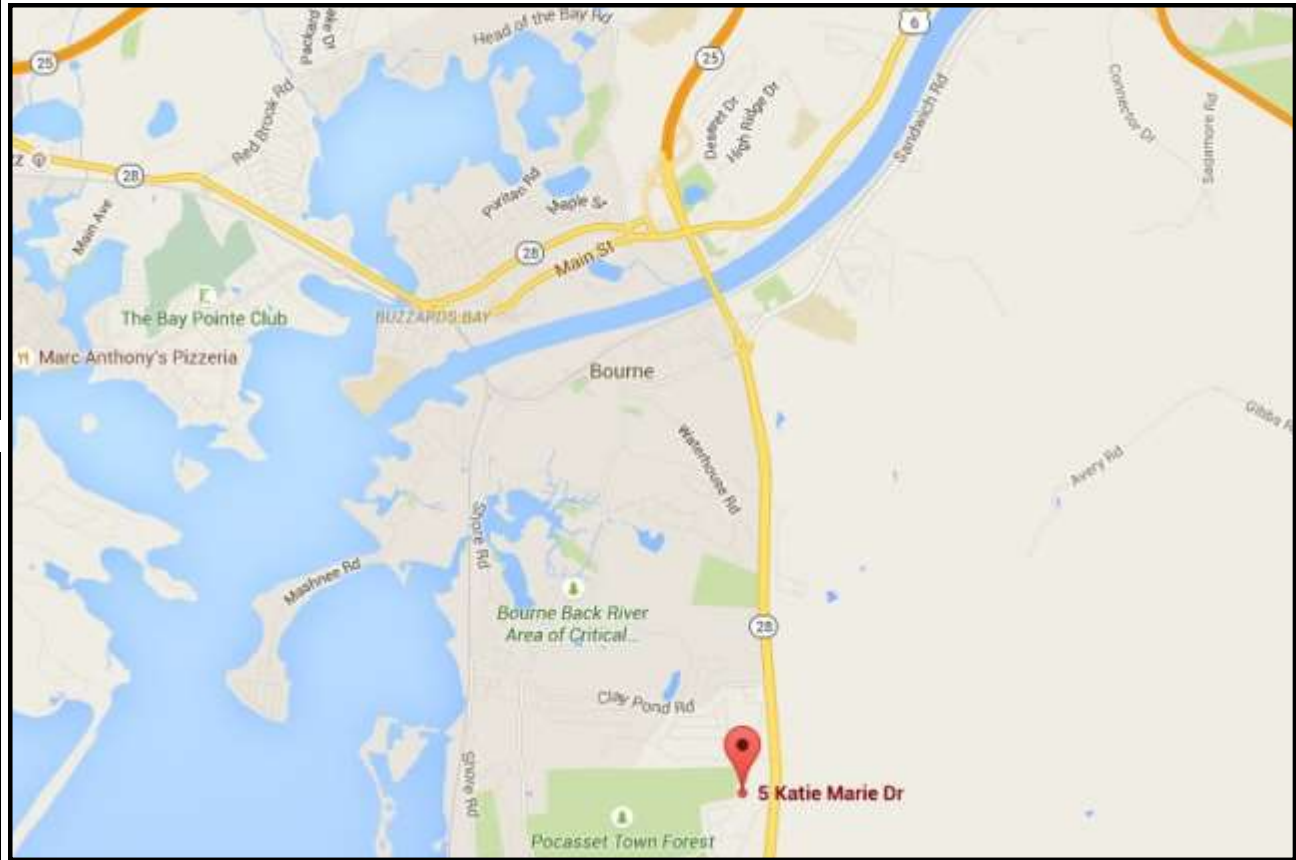


# 1,000+/- SQ FT BUSINESS BAY FOR LEASE

## 5 KATIE MARIE DRIVE, UNIT 7, BOURNE, MA



- 12' x 12' Overhead Doors
- New Construction
- Canopied Sidewalk
- Ample Parking
- Proximate to Bourne Bridge with access to Rts. 25, 195, and 495

**Asking: \$1,200 / month plus utilities**

For more information about this opportunity contact:

**Kevin Pepe**

508.862.9000 Ext. 105

Mobile: 508.962.5022

kpepe@comrealty.net

Commercial  
**Realty Advisors**  
[www.comrealty.net](http://www.comrealty.net)

**Commercial Realty Advisors, Inc.**

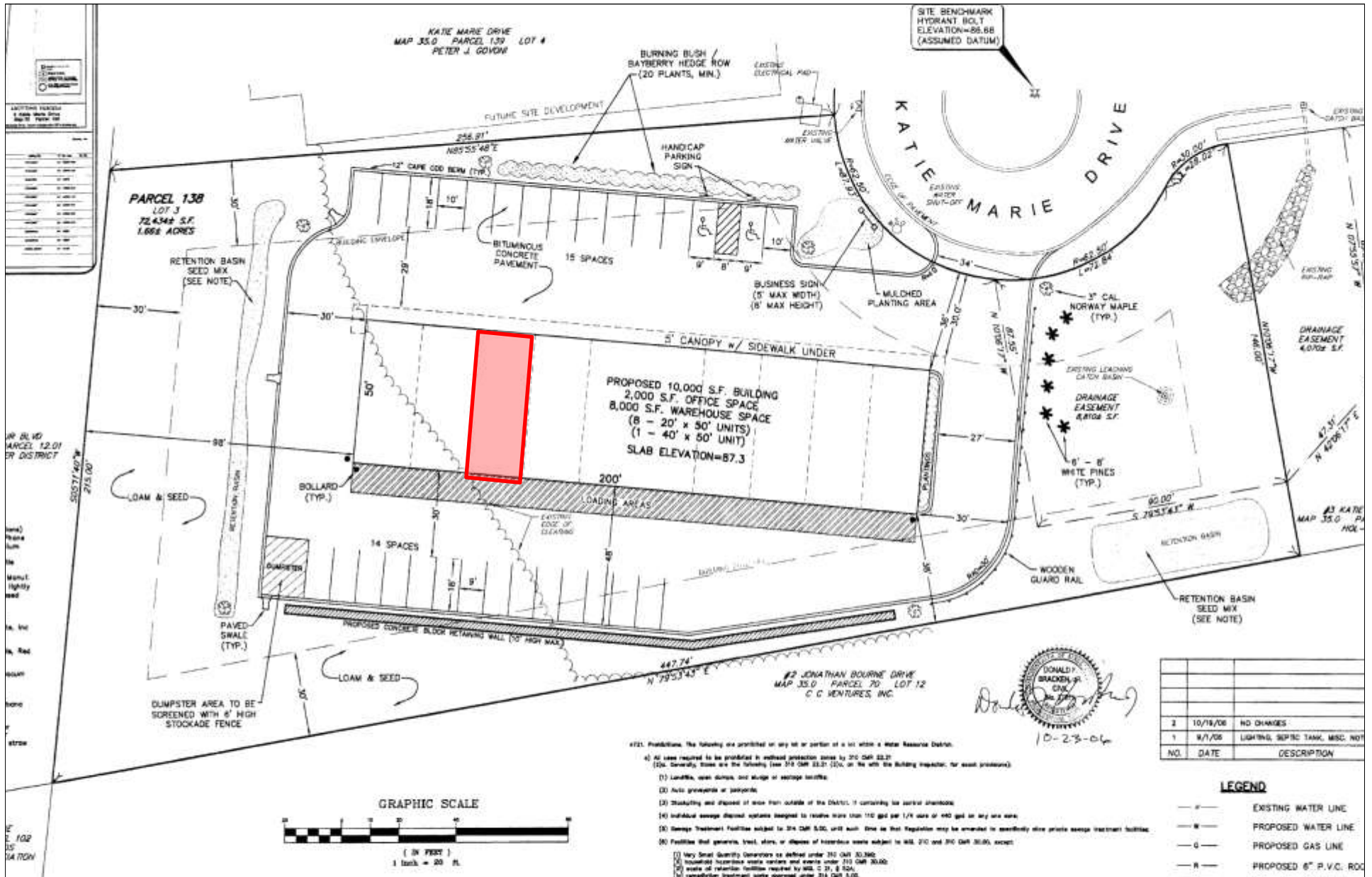
Real Estate Investment Brokerage Company

222 West Main Street

Hyannis, Massachusetts 02601

Tel: 508.862.9000

This information has been secured from sources we believe to be reliable, but we make no representation or warranties, expressed or implied, as to the accuracy of the information. Referenced square footage and acreage and sketched outlines of the property are approximate. Buyer must verify all the information and bears all the risk for any inaccuracies.



This information has been secured from sources we believe to be reliable, but we make no representation or warranties, expressed or implied, as to the accuracy of the information. Referenced square footage and acreage and sketched outlines of the property are approximate. Buyer must verify all the information and bears all the risk for any inaccuracies.