

Industrial Space For Lease

24 Commonwealth Avenue, Unit 4, Yarmouth, MA



PROPERTY HIGHLIGHTS:

- 700+/- SQ FT BAY SPACE
- 14 FOOT OVERHEAD DOOR
- MUNICIPAL WATER
- GAS HEAT
- AMPLE PARKING
- CLOSE PROXIMITY TO EXIT 8 ON THE MID-CAPE HIGHWAY



700+/-Sq Ft Unit for Lease @ \$800/Month + Utilities

For more information about this opportunity contact:

Kevin Pepe

508.862.9000 Ext. 105

Mobile: 508.962.5022

kpepe@comrealty.net

Commercial
Realty Advisors
www.comrealty.net

Commercial Realty Advisors, Inc.

Real Estate Investment Brokerage Company

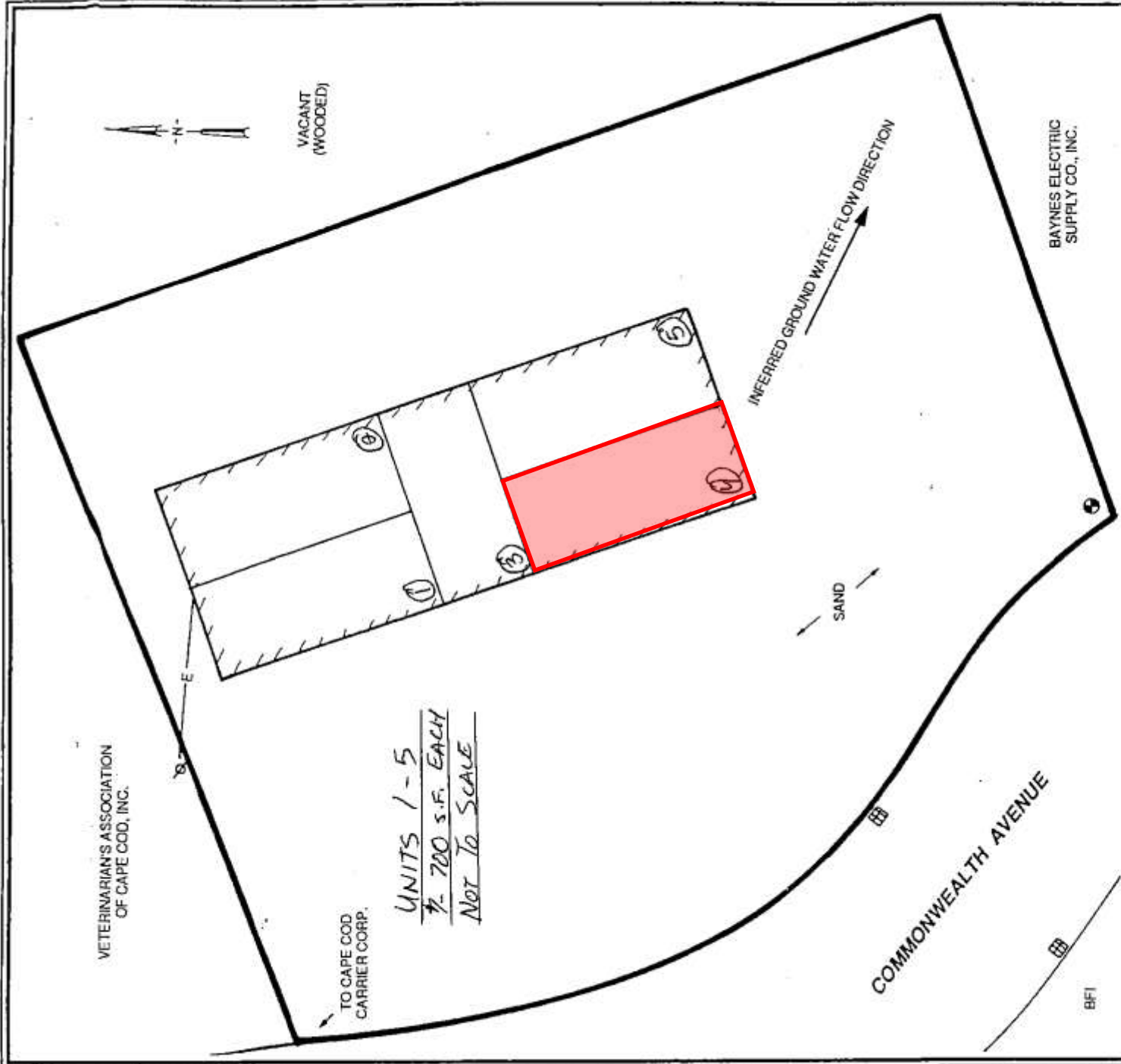
222 West Main Street

Hyannis, Massachusetts 02601

Tel: 508.862.9000

Fax: 508.862.9200

This information has been secured from sources we believe to be reliable, but we make no representation or warranties, expressed or implied, as to the accuracy of the information. Referenced square footage and acreage and sketched outlines of the property are approximate. Buyer must verify all the information and bears all the risk for any inaccuracies.



SCHEMATIC SITE PLAN

24 Commonwealth Avenue
 South Yarmouth, Massachusetts

APPROXIMATE SCALE IN FEET
 0 25 50

DRAWN BY: S.O.
 CHECKED BY: K.B.

JOB #16233094
 MAY 1993

FIGURE 3

FUGRO & McCLELLAND