

2,217+/- Sq Ft Double-Unit Commercial Condominium for Sale Units D1 & D2, 15 Jan Sebastian Drive, Sandwich, MA



Property Description:

This offering consists of a double unit that was renovated when purchased by the prior owner. Office space was combined but the two bays were left separate both with overhead doors. Office area has one enclosed office with a large storage closet, a reception area, a kitchenette area, and one restroom. In the bay area is another restroom. Property is vacant and in move-in condition. Utilities on site are gas and electric. Condo is serviced by a Title V system.

Condo fees: \$460/Month (both units), RE Taxes: \$2,961 (2018)

Signage is available at the entrance to the unit. Parking is open with the exception of the space along the back of the unit by the overhead doors. These parking spaces are dedicated.

Location Description:

Property is located in the Sandwich Industrial Park, as short distance from Exit 2 of the mid-Cape Highway.

For more information about this opportunity contact:

Kevin Pepe

508.862.9000 Ext. 105
Mobile: 508-962-5022
kpepe@comrealty.net



Commercial
Realty Advisors
www.comrealty.net

Commercial Realty Advisors, Inc.

Real Estate Investment Brokerage Company
222 West Main Street
Hyannis, Massachusetts 02601
Tel: 508.862.9000
Fax: 508.862.9200



For more information about this opportunity contact:

Kevin Pepe

508.862.9000 Ext. 105
Mobile: 508-962-5022
kpepe@comrealty.net

Commercial
Realty Advisors
www.comrealty.net

Commercial Realty Advisors, Inc.

Real Estate Investment Brokerage Company
222 West Main Street
Hyannis, Massachusetts 02601
Tel: 508.862.9000
Fax: 508.862.9200

This information has been secured from sources we believe to be reliable, but we make no representation or warranties, expressed or implied, as to the accuracy of the information. Referenced square footage and acreage and sketched outlines of the property are approximate. Buyer must verify all the information and bears all the risk for any inaccuracies.



For more information about this opportunity contact:

Kevin Pepe

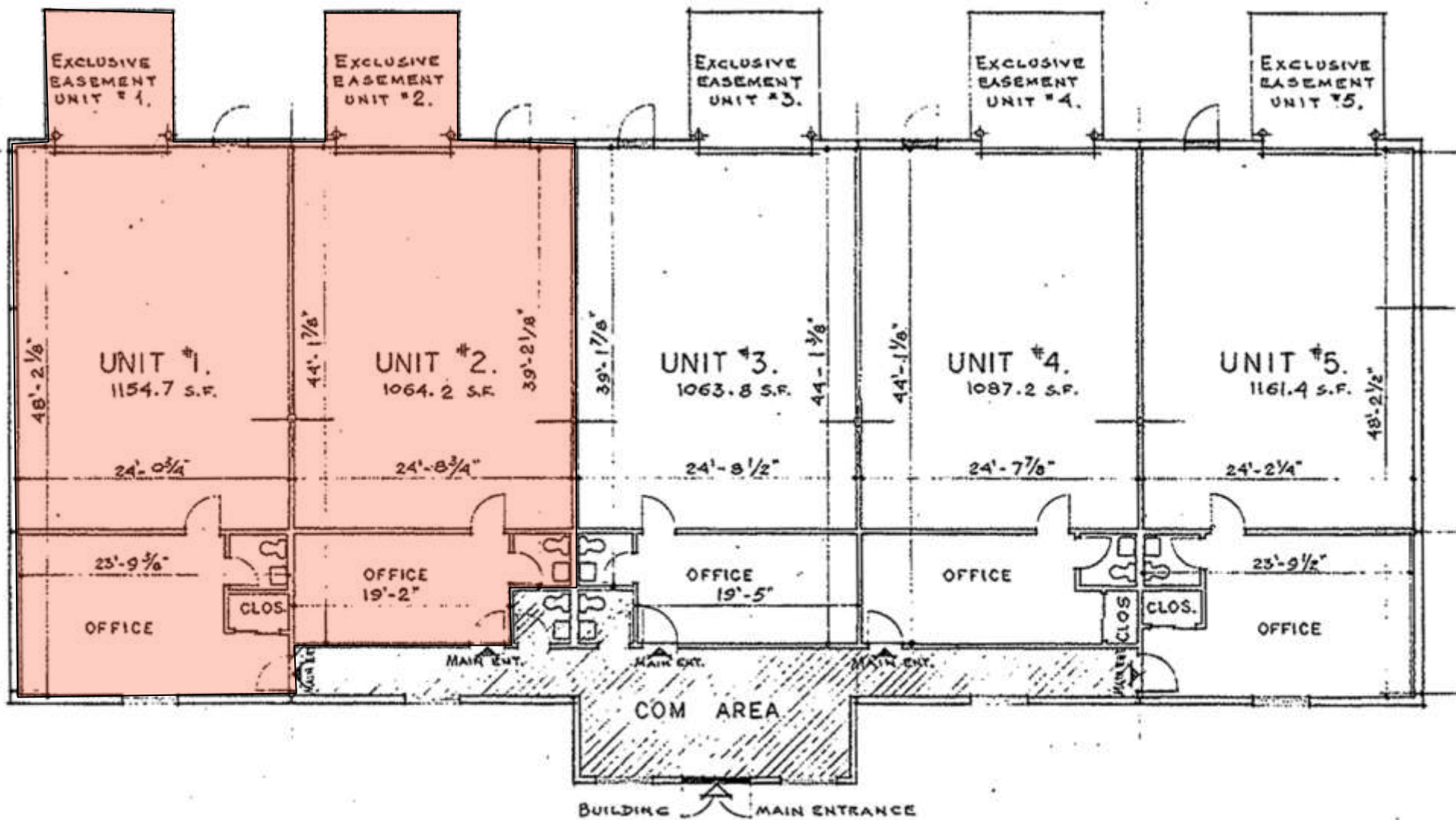
508.862.9000 Ext. 105
Mobile: 508-962-5022
kpepe@comrealty.net

Commercial
Realty Advisors
www.comrealty.net

Commercial Realty Advisors, Inc.

Real Estate Investment Brokerage Company
222 West Main Street
Hyannis, Massachusetts 02601
Tel: 508.862.9000
Fax: 508.862.9200

This information has been secured from sources we believe to be reliable, but we make no representation or warranties, expressed or implied, as to the accuracy of the information. Referenced square footage and acreage and sketched outlines of the property are approximate. Buyer must verify all the information and bears all the risk for any inaccuracies.



BUILDING "D": FLOOR PLAN.